

# **Initial Impacts of CGS' Project on Completion and Attrition in STEM: Loyola University Chicago**

*Council of Graduate Schools Annual Meeting  
Washington, D.C.  
December 6, 2012*

*Supported through a grant from the Council of Graduate Schools  
and the Alfred Sloan Foundation*



*Preparing people to lead extraordinary lives*

# Project Team Members

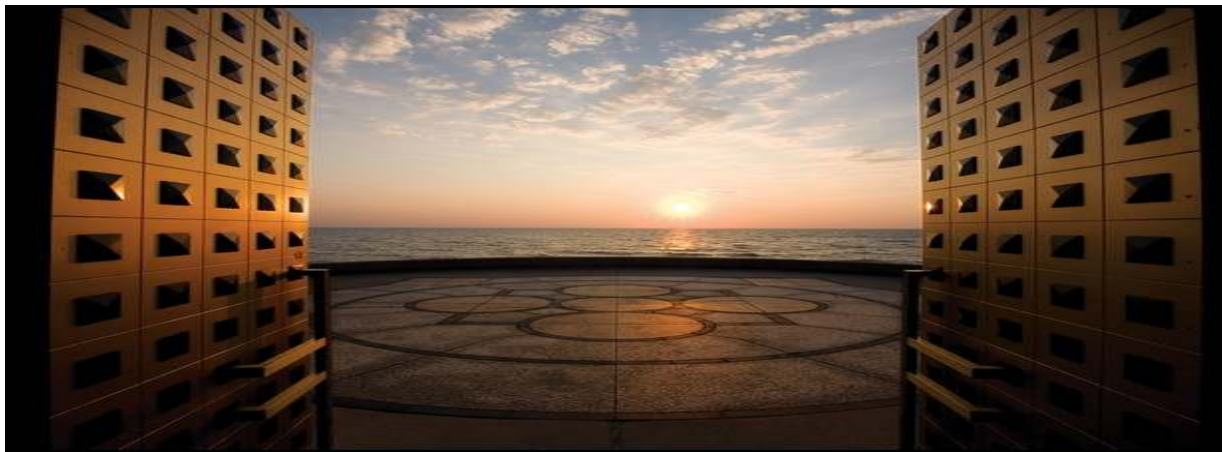
Principal Investigator: Dr. Samuel A. Attoh, Graduate  
Dean & Associate Provost

Co-Principal Investigator: Dr. Patricia Mooney-Melvin,  
Associate Dean

Project Director: Dr. Jessica Horowitz,  
Assistant Dean

Data Manager: Pawel Grudysz

Graduate Assistant: Dana Wagner



*Preparing people to lead extraordinary lives*

# Summary of Presentation

- Overview of Graduate Programs
- Graduate Student Demographics
- Preliminary Results from Study
- Initial Institutional Impacts
- Examples of Enhanced Masters Programming
- Future Directions



*Preparing people to lead extraordinary lives*

# Brief Overview of Graduate Programs

- Mission focus: social justice, ethics, and expanding knowledge in the service of others.
- Total Enrollment: 16,040
- 6184 Graduate & Professional 1,576 graduate students (605 doctoral and 971 Master's).
- 28 doctoral programs, a Doctorate in Bioethics, and 47 master's programs.
- More than 600 graduate faculty members located across three campuses



# Graduate Student Demographics

- 47% Female
- 6.3% African-American
- 5.5% Hispanic
- 8% Asian/Pacific Islander
- 0.7% American-Indian/Alaska Native
- 9% International
- 1.5% Multiracial
- 9.1% Ethnicity Unknown





## **Core STEM Programs meeting project criteria**

- Medical Sciences
- Computer Sciences
- Math & Statistics
- Social Psychology
- Community Counseling

## **Other STEM & STEM-affiliated programs included in analysis**

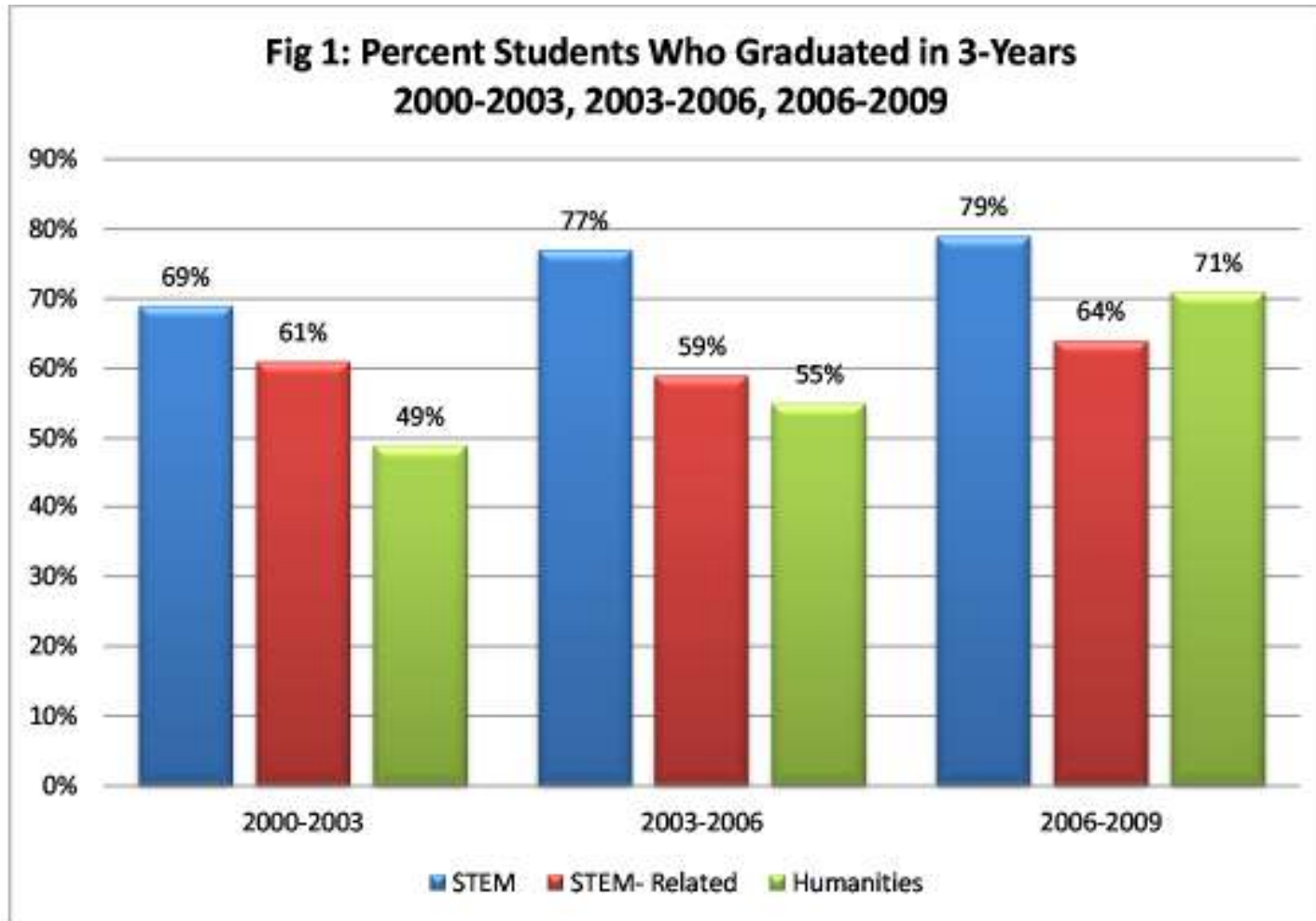
- Biomedical Sciences
- Biological Sciences
- Chemistry
- Sociology
- Political Science
- Criminal Justice
- Public Policy
- Women's & Gender Studies

## **Humanities Programs**

- English
- History & Public History
- Philosophy
- Theology

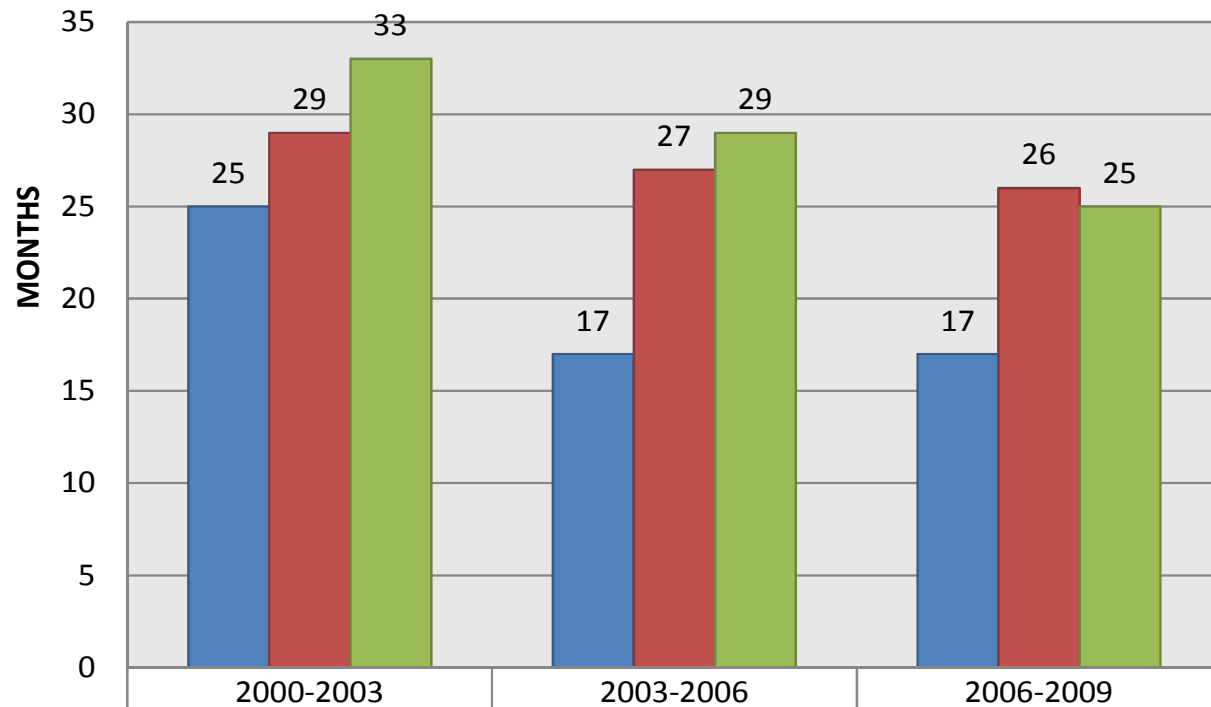


# Preliminary Findings on Degree Completion



# Preliminary Findings on Time-to-Degree

**Fig. 2: Average Time to Degree Completion for Loyola Master's Students by Program**



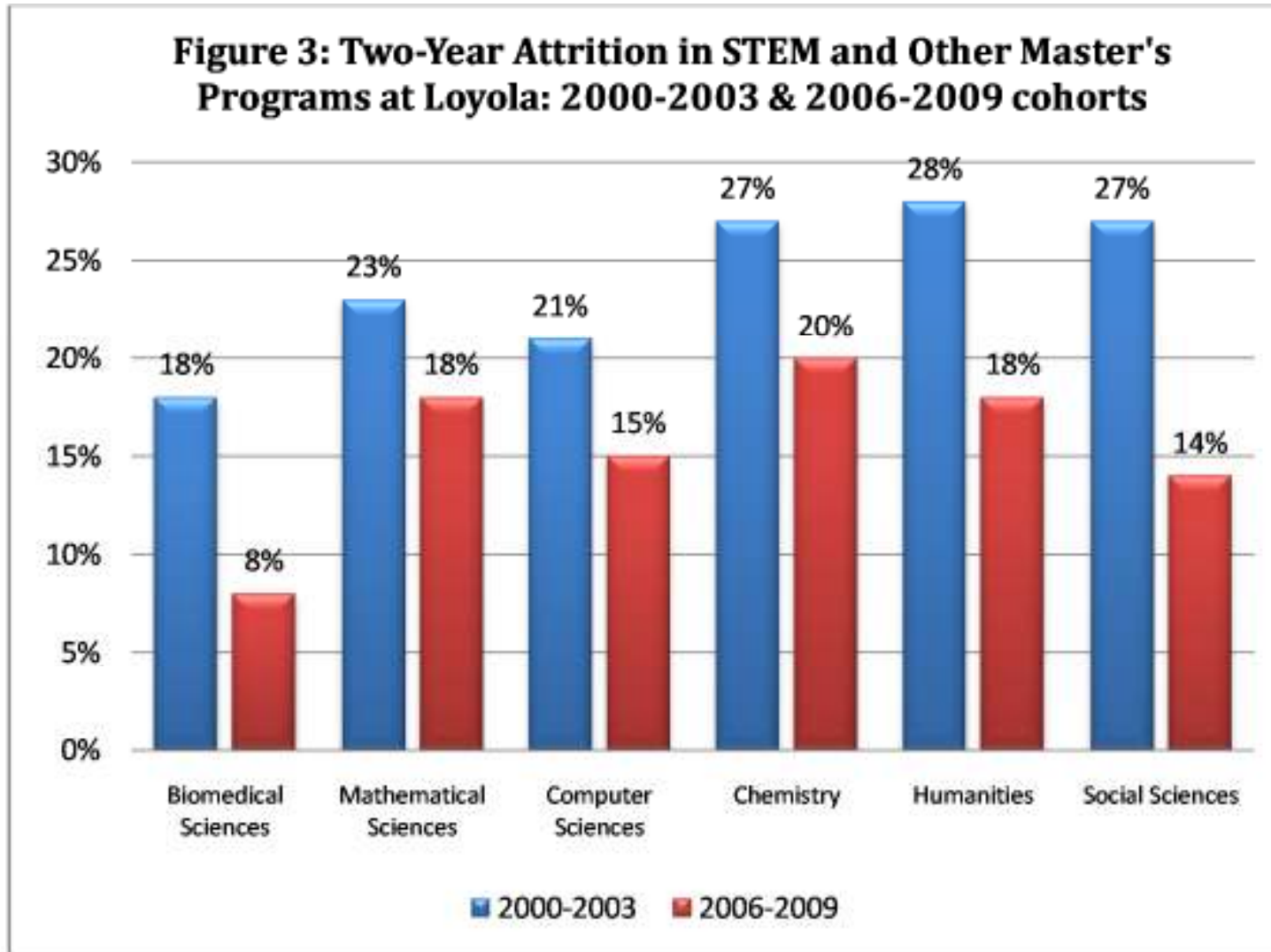
■ STEM	25	17	17
■ STEM- Related	29	27	26
■ Humanities	33	29	25





# Preliminary Findings on Attrition

**Figure 3: Two-Year Attrition in STEM and Other Master's Programs at Loyola: 2000-2003 & 2006-2009 cohorts**



# Initial Institutional Impacts

- Significant buy-in from graduate program directors
- Good response rates on newly-enrolled and graduating student surveys
- Launched renewed emphasis on master's education:
  - Enhanced master's level programming



# Examples of Enhanced Master's Programming

- Partial Tuition Waivers
- Research
  - Research Experience for Master's Students (REMS)
  - Research Incentive Award for Graduate Students (RIAGS)
- Mentoring
  - Master's Students Paired with undergraduate students in the Achieving College Excellence (ACE) program
  - McNair Scholars
- Professional Development Workshops.
  - Skills development: project management & professional writing
  - Writing Tutoring Program.
- Fine-Tuning Data Tracking System: GSPS
  - Development of Key Performance Indicators



## Future Directions

- Benchmark master's programming with national data and best practices.
- Developing guidelines for online master's programming.
- Considering scaling up annual review of student progress.
- Community mentoring program for master's students: math tutoring, literacy program.

