

Surveying Doctoral Alumni of UC Berkeley

presented by Andrew J. Szeri
Dean of the Graduate Division
to
Council of Graduate Schools
December 8, 2012

Surveys of Graduate Alumni

- Doctoral Placement Survey
 - First placement (1 – 1.5 years after graduation)
 - Dissertation advisors
- Doctoral Alumni Survey
 - Career trajectory (5, 10, 20, 30, 40 years after graduation)
 - Population contact information from University Relations database
- Master's alumni not surveyed centrally (yet)

Doctoral Placement Survey

- Survey started in 1996
- Information on approx. 90% of graduates
 - “Unknown” tracked down on Internet
- Summary reports provided to graduate programs
 - Updated annually
- Placement reports included in departmental reviews

First Placement Summary - Sector

	1997-98 to 2001-02		2002-03 to 2006-07		2007-08 to 2009-10	
Business (for profit)	819	22%	706	18%	506	20%
National laboratory	126	3%	137	3%	141	6%
College or university	2,054	54%	2,341	58%	1,441	57%
K-12 school	28	1%	44	1%	20	1%
Government	200	5%	183	5%	78	3%
Hospital/Clinic	26	1%	34	1%	23	1%
Self-employed	66	2%	53	1%	18	1%
Other/Non-profit	142	4%	172	4%	106	4%
Unknown	320	8%	317	8%	184	7%
<i>All Employed</i>	<i>3,781</i>	<i>100%</i>	<i>3,987</i>	<i>100%</i>	<i>2,517</i>	<i>100%</i>

First Placement Summary - Position

	1997-98 to 2001-02		2002-03 to 2006-07		2007-08 to 2009-10	
Postdoc	949	25%	1,178	30%	842	34%
Non-tenure track faculty	254	7%	235	6%	161	6%
Tenure track faculty	851	23%	1,022	26%	467	19%
Researcher	523	14%	463	12%	282	11%
Other	1,037	28%	738	19%	548	22%
Unknown	128	3%	319	8%	190	8%
<i>All Employed</i>	<i>3,742</i>	<i>100%</i>	<i>3,955</i>	<i>100%</i>	<i>2,490</i>	<i>100%</i>

Doctoral Alumni Survey

- Conducted in 2012
- Five graduation cohorts corresponding roughly to NSF SDR cohorts
- Respondent characteristics taken from responses to earlier surveys
- Employment items mirrored from SDR
- Other topics: career preparation, community service, awards and ongoing connection with campus
- *Arts and humanities PhDs included!*
- *International alumni included!*

Doctoral Alumni Population

Cohort	Excluded		Mail Only		Email Only		Both Modes		All	
	Count	Percentage	Count	Percentage	Count	Percentage	Count	Percentage	Count	Percentage
2005-06 to 2007-08	92	3.6%	1,113	44.3%	259	10.3%	1,047	41.6%	2,511	100%
1999-00 to 2001-02	74	3.2%	1,266	55.3%	177	7.7%	770	33.6%	2,287	100%
1989-90 to 1991-92	141	6.0%	1,290	55.1%	202	8.6%	708	30.2%	2,341	100%
1979-80 to 1981-82	140	6.9%	1,116	55.0%	129	6.3%	641	31.6%	2,026	100%
1968-69 to 1971-72	518	15.5%	1,713	51.2%	252	7.5%	857	25.6%	3,340	100%
<i>All</i>	965	7.7%	6,498	51.9%	1,019	8.1%	4,023	32.1%	12,505	100%

Excluded from population:

- Deceased
- No contact information
- Requested no contact

Survey Costs

Task	Cost
Development and approval of instrument	80 hours staff time spread over 18 months
Track down missing contact information for international alumni	50 hours of workstudy time to find approximately 500 addresses
Preparing and mailing two waves of paper invitations	Printing company for approximately \$12,000
Data cleaning and coding	20 hours workstudy time
Data analysis	Ongoing...

Doctoral Alumni Response Rate

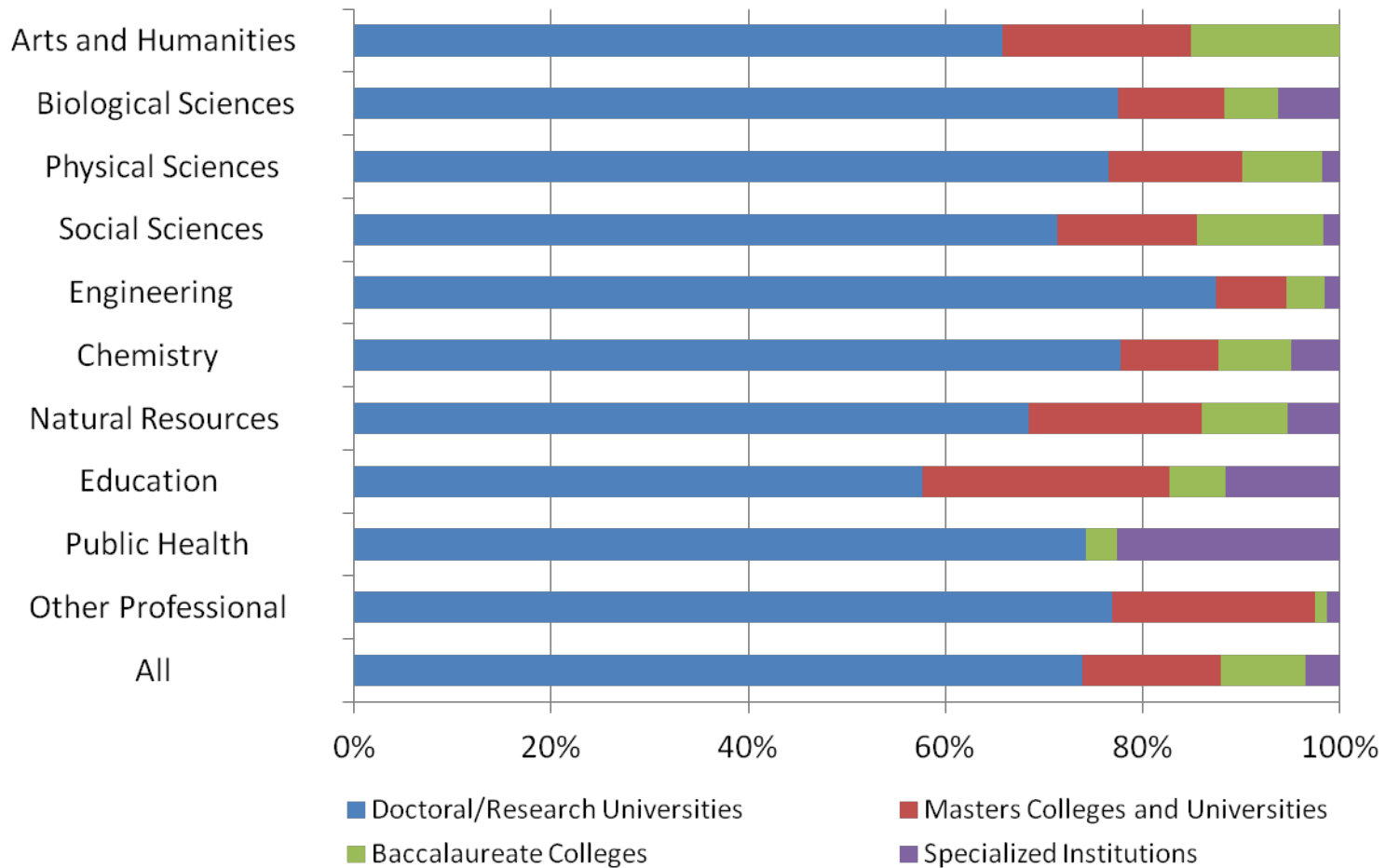
Cohort	Included	All		Mail Only		Email Only		Both Modes	
		Count	Rate	Count	Rate	Count	Rate	Count	Rate
2005-06 to 2007-08	2,419	535	22%	130	12%	74	29%	331	32%
1999-00 to 2001-02	2,213	417	19%	137	11%	61	34%	219	28%
1989-90 to 1991-92	2,200	472	21%	165	13%	86	43%	221	31%
1979-80 to 1981-82	1,886	403	21%	143	13%	47	36%	213	33%
1968-69 to 1971-72	2,822	638	23%	239	14%	106	42%	293	34%
<i>All</i>	<i>11,540</i>	<i>2,465</i>	<i>21%</i>	<i>814</i>	<i>13%</i>	<i>374</i>	<i>37%</i>	<i>1,277</i>	<i>32%</i>

Doctoral Workforce Comparison

Sector	NSF SDR (2008)		Berkeley Alumni Survey (2012)*		Berkeley Arts & Humanities (2012)	
	Count	Percentage	Count	Percentage	Count	Percentage
Four-year educational institutions	269,400	41.4%	996	55.2%	152	78.3%
Private for-profit	212,200	32.6%	438	24.2%	16	8.2%
Private non-profit	42,900	6.6%	87	4.8%	6	3.0%
National government	43,700	6.7%	81	4.4%	0	0.0%
State and local government	18,900	2.9%	64	3.5%	8	4.1%
Self-employed	41,000	6.3%	78	4.3%	9	4.6%
Other	23,100	3.5%	59	3.2%	3	1.5%
<i>All employed</i>	<i>651,200</i>	<i>100.0%</i>	<i>1,803</i>	<i>100.0%</i>	<i>194</i>	<i>100.0%</i>

*Arts and Humanities excluded from totals to be comparable to SDR

Carnegie Classification of Employer



*Respondents that were employed in US 4-year colleges, medical schools and university-affiliated research institutes

Location of Employer

California 35%

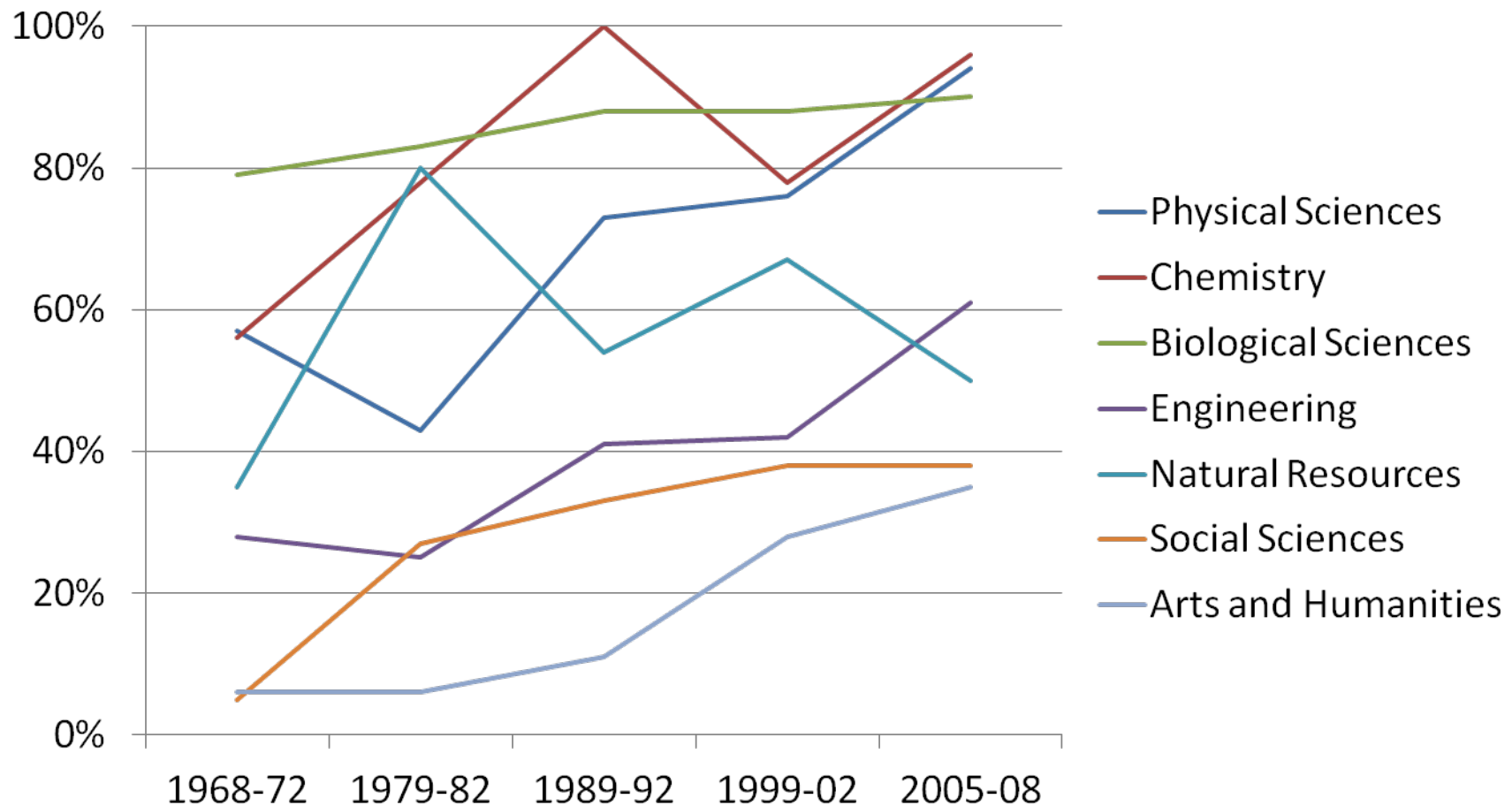
- 20% in the UC System
- 5% in CSU System
- 10% in other California institutions

Top 5 Institutions (non-UC)

- Stanford University
- University of Washington
- MIT
- Harvard University
- University of Oregon

*Respondents that were employed in US 4-year colleges, medical schools and university-affiliated research institutes

Post-Doctoral Appointments



*A temporary position awarded in academe, industry, a non-profit organization or government primarily for gaining additional education and training in research.

Prevalence of Loan Debt at Graduation

