

# Career Outcomes for STEM Master's Degree Recipients

## Impacts of Federal Laboratory Research Internships

**Wayne Stevenson**  
**Vice President and Director**  
**Oak Ridge Associated Universities**  
**Science Education Programs**

**[wayne.stevenson@orau.org](mailto:wayne.stevenson@orau.org)**

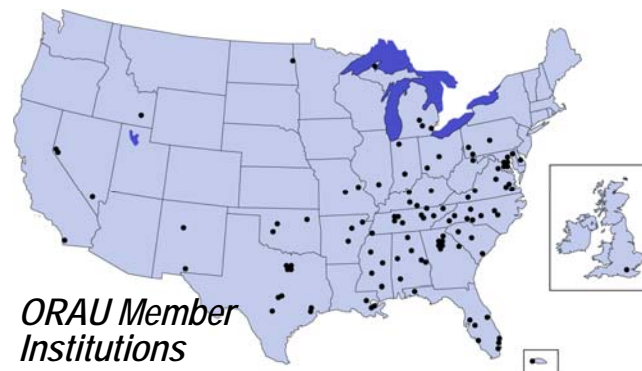


**ORAU**

*innovative solutions to strengthen and secure america*

# *Oak Ridge Associated Universities is a . . .*

**. . . University consortium  
focused on advancing scientific  
research and education through  
partnerships**



**. . . Partner with UT-Battelle to  
expand university collaboration with  
Oak Ridge National Laboratory**



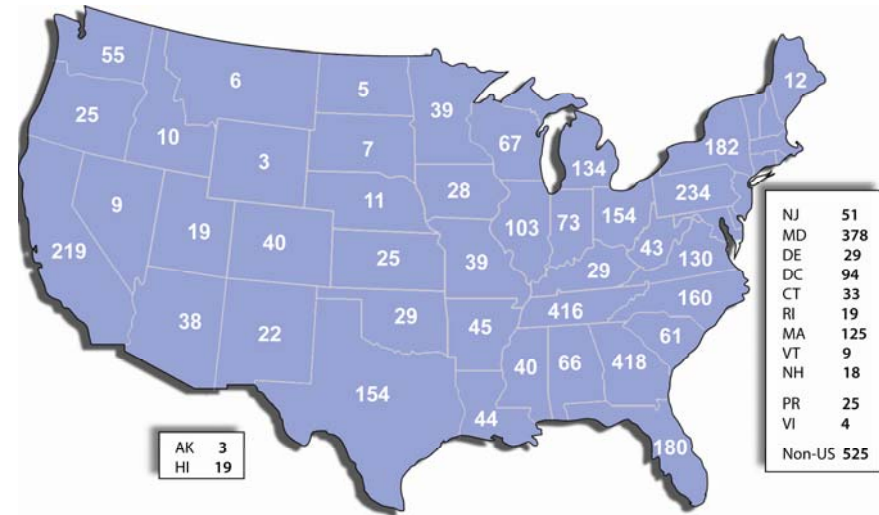
**. . . Federal contractor managing  
the Oak Ridge Institute for  
Science and Education for DOE**



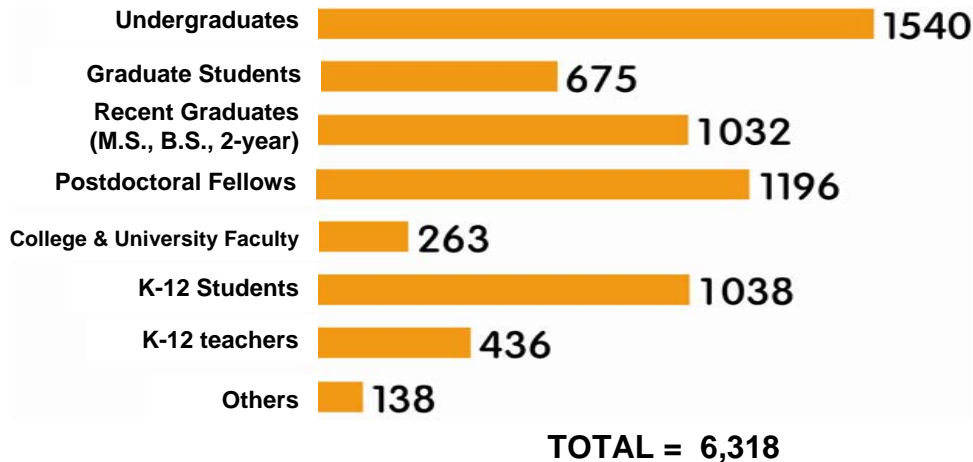
# ORAU Programs Address National Workforce Needs Through:

- Fellowships and scholarships
- Internships and research participation
- K-12 teacher development
- Science competitions and other activities
  - DOE National Day of Science
  - Student Meetings with Nobel Laureates
  - National Science Bowl® Support
- Research, analysis, and assessment

## FY09 Geographical Distribution of Undergraduate and Graduate Students, Recent Graduates, and Faculty



## FY09 Program Participants



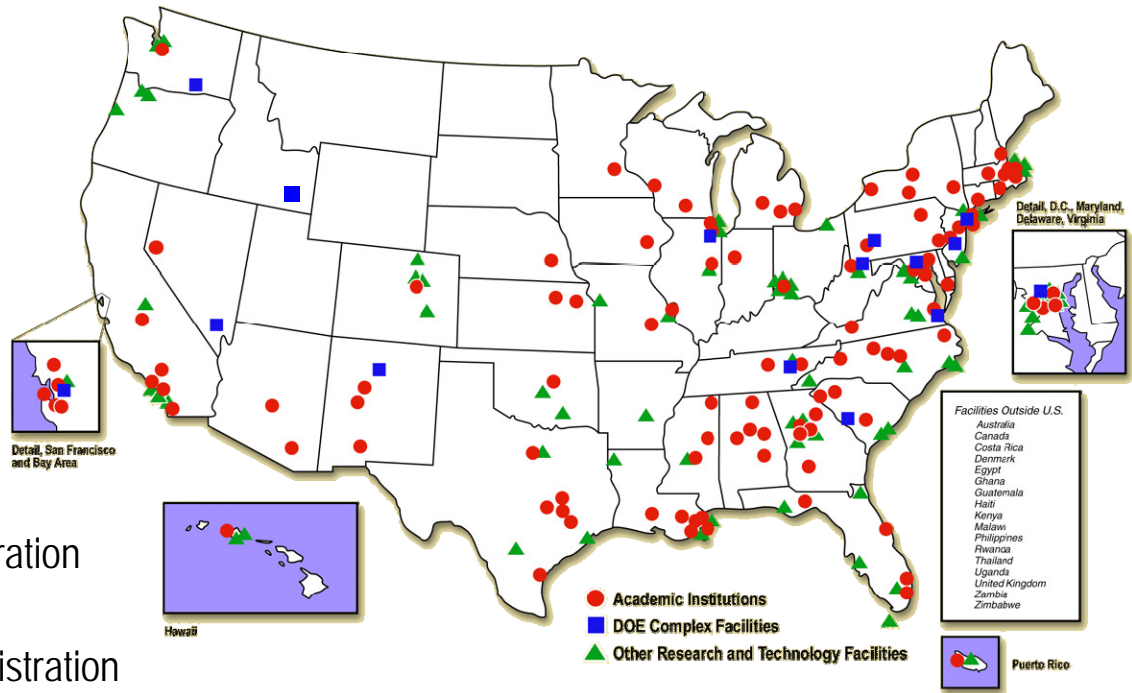
## Participants in FY2009

- Represent more than 1000 U.S. and foreign colleges and universities
- Received \$118M in stipends and other payments to participants

# National Laboratories, Federal Research Centers, and Universities Host Appointments

## Program Sponsors Include:

Oak Ridge National Laboratory  
Department of Energy  
Centers for Disease Control  
Department of Commerce  
Department of Defense  
Department of Homeland Security  
Environmental Protection Agency  
Federal Bureau of Investigation  
Food and Drug Administration  
National Aeronautics and Space Administration  
National Institutes of Health  
National Oceanic and Atmospheric Administration  
National Science Foundation  
Nuclear Regulatory Commission



*More than 330 Universities and Research Centers Host Participants in Science Education/Workforce Development Programs*

# *Master's-Level Interns Complete Their Degrees and Continue in Their Degree Fields*

After Completion of Internship, they:

Approximate

Accept Employment Position with Laboratory

35%

Return to School (for PhD)

29%

Work for a University

14%

Work in Private Sector

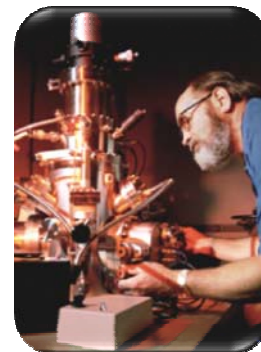
11%

Other

11%

---

100%



# *There is Considerable Variation in Early Career Path Based on:*

Intent of Program

Orientation of Interns and Mentors

Recruitment and Selection

Mentor -- Effective and Continuous

Significance of Research

Exposure to People and Projects

Family Support (especially for foreign nationals)

Professional Development Opportunities

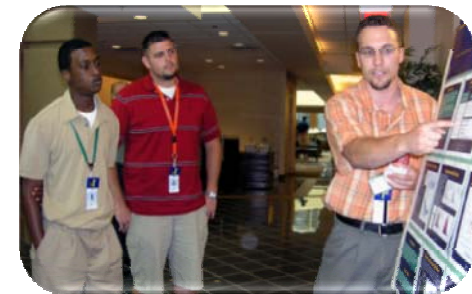
Professional Travel

Presentations of Research

Seminars

Workshops (writing, communications, ...)

Culmination/Capstone Experience



# *Learn More About ORAU*

<http://www.orau.org>



**ORAU**

*innovative solutions to strengthen and secure america*