

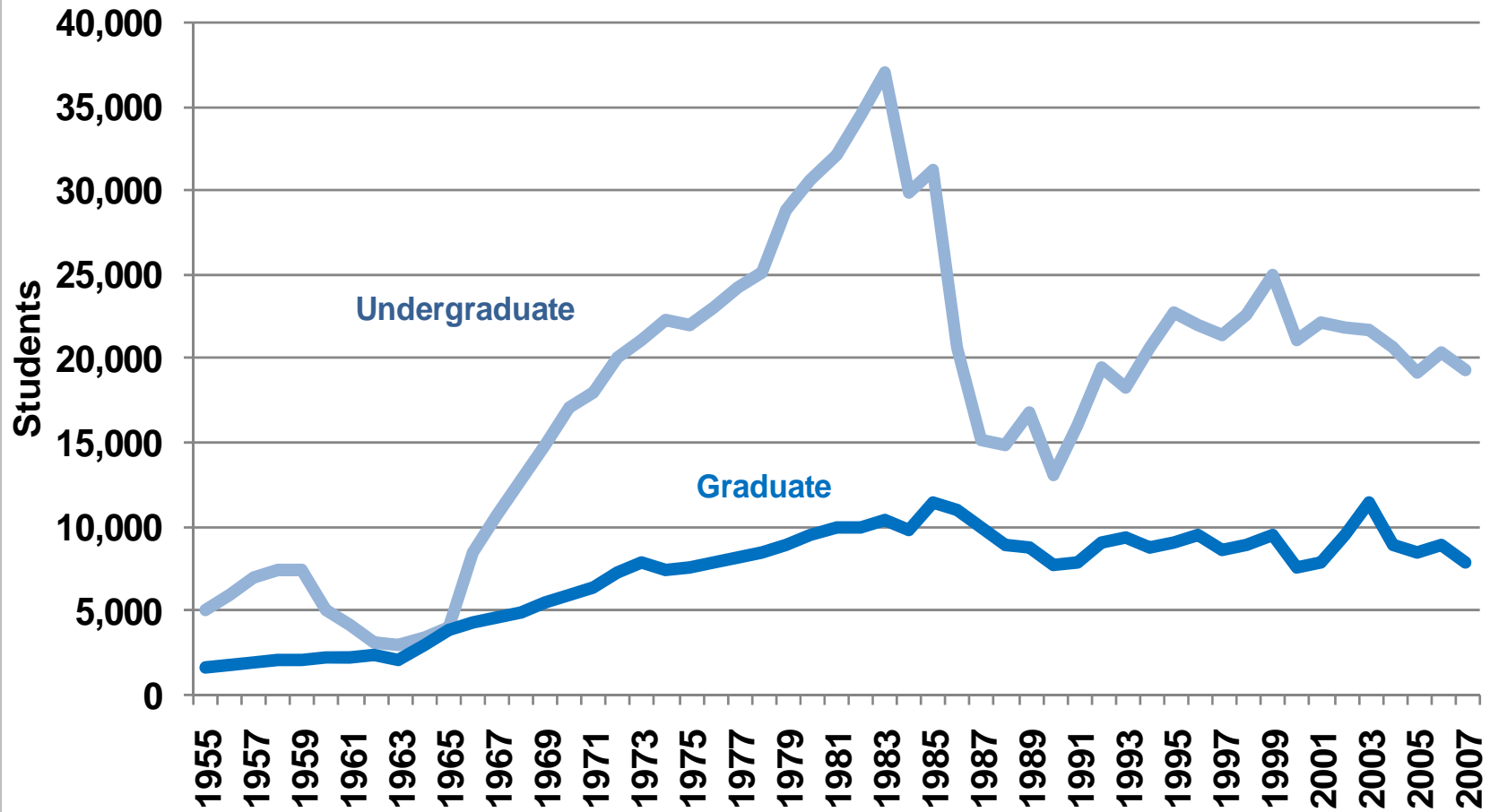
# Master's Degrees in Geoscience

Christopher M. Keane  
American Geological Institute

# Geoscience Master's Overview

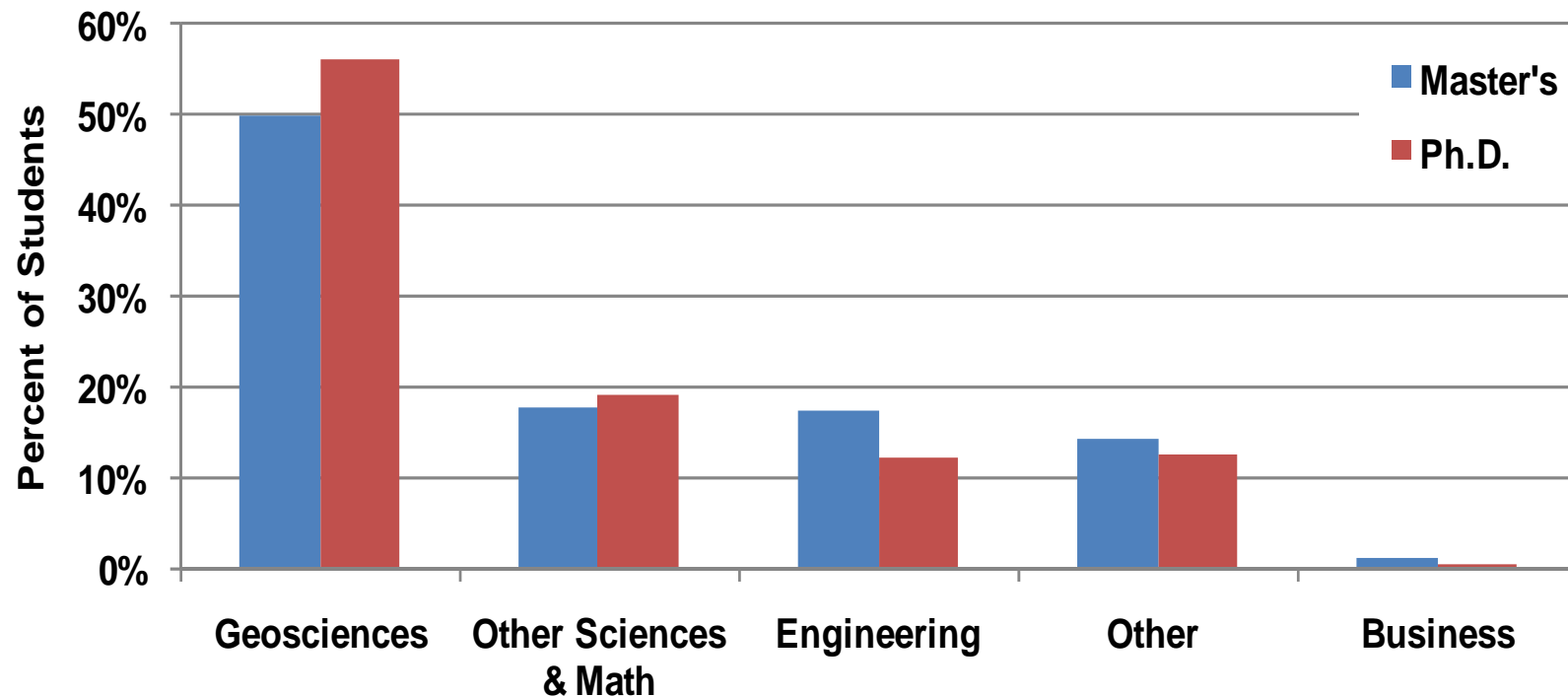
- Degree of choice for practitioners
- Is 'it' desirable?
  - BS: Few career advancement opportunities
  - Ph.D.: Only needed in advanced research
- 99.5% employment upon graduation
- 82% of MS programs focus on Ph.D. preparation, yet....
- Only 28% go on to Ph.D. program

## U.S. Geoscience Enrollments (1955-2007)



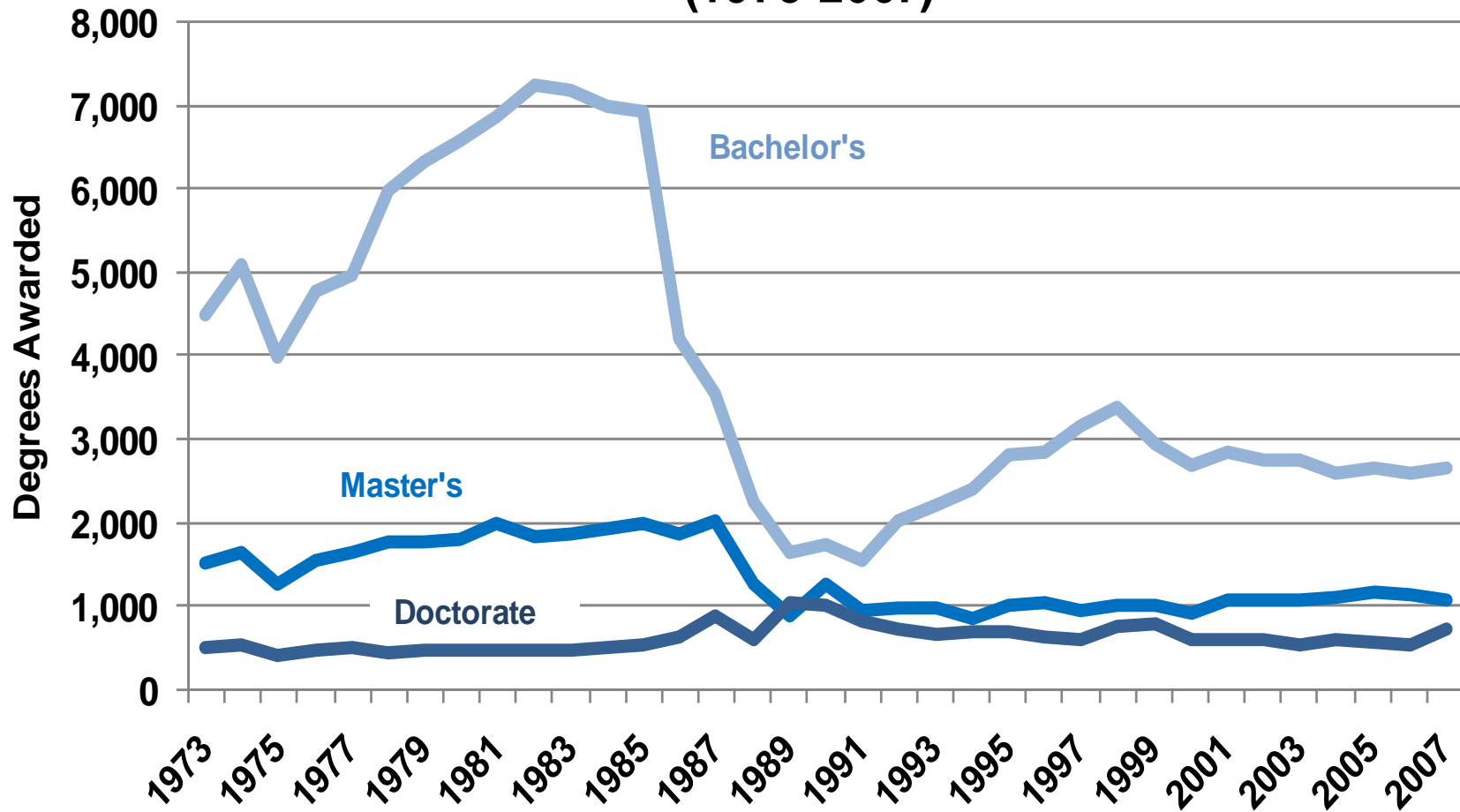
Source: AGI Geoscience Workforce Program, data derived from AGI's Directory of Geoscience Departments

## Bachelor's Degree Fields of Terminal Geoscience Master's and Doctoral Degree Recipients (2003)



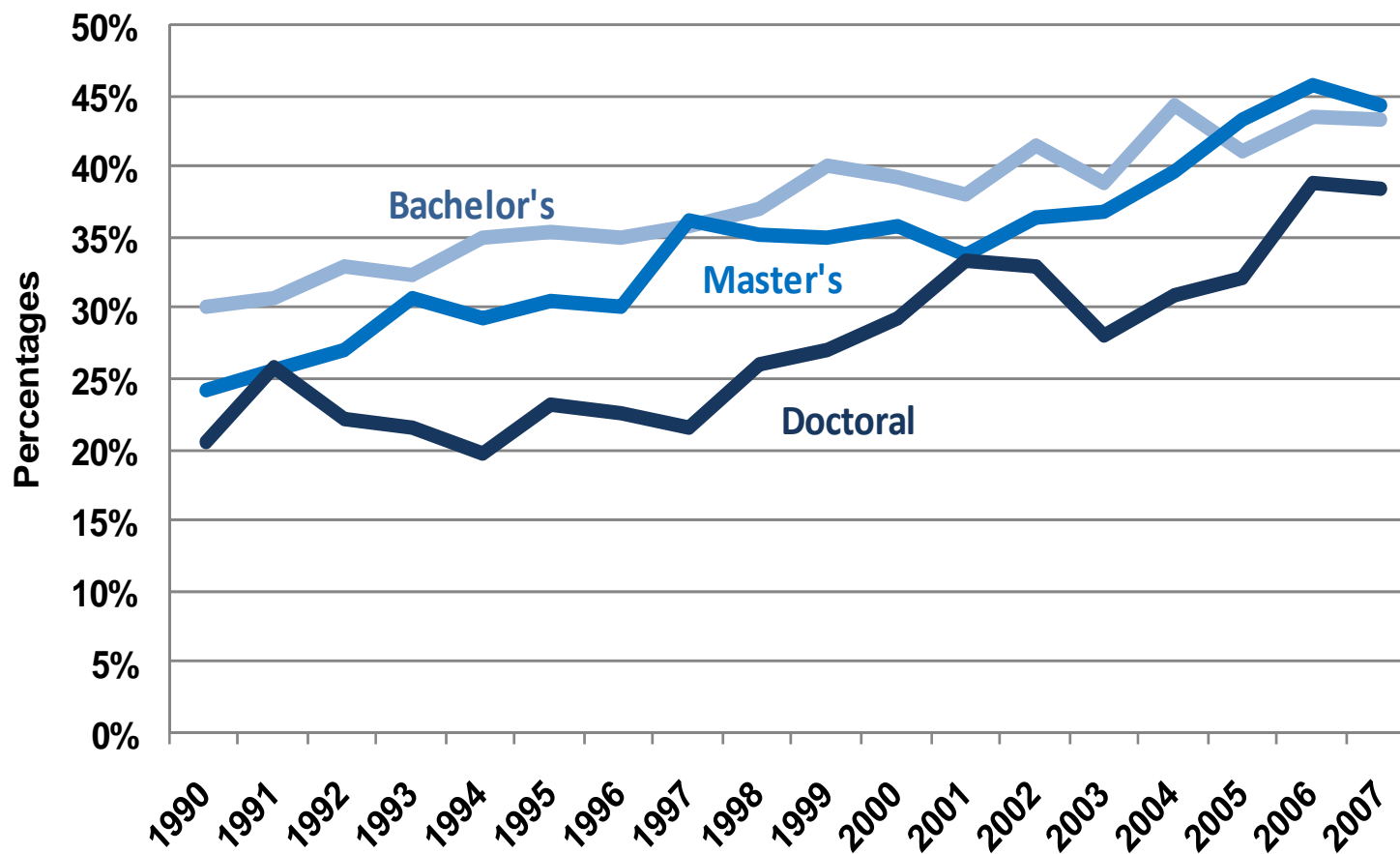
Source: AGI Geoscience Workforce Program, data derived from NSF/SRS NSCG, 2003

## U.S. Geoscience Degrees Granted (1973-2007)



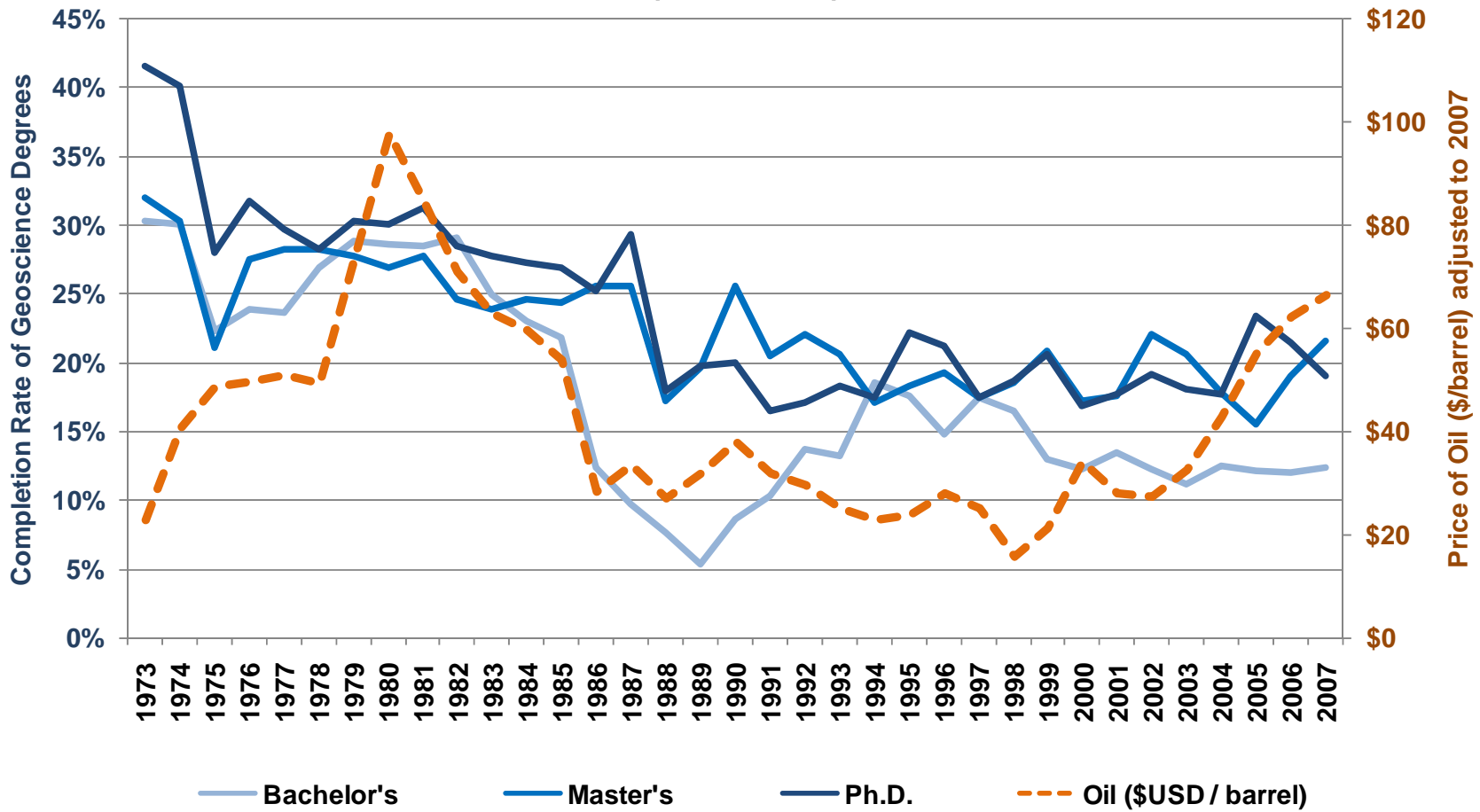
Source: AGI Geoscience Workforce Program, data derived from AGI's Directory of Geoscience Departments

## Percentage of Geoscience Degrees Conferred to Women (1990-2007)



Source: AGI Geoscience Workforce Program

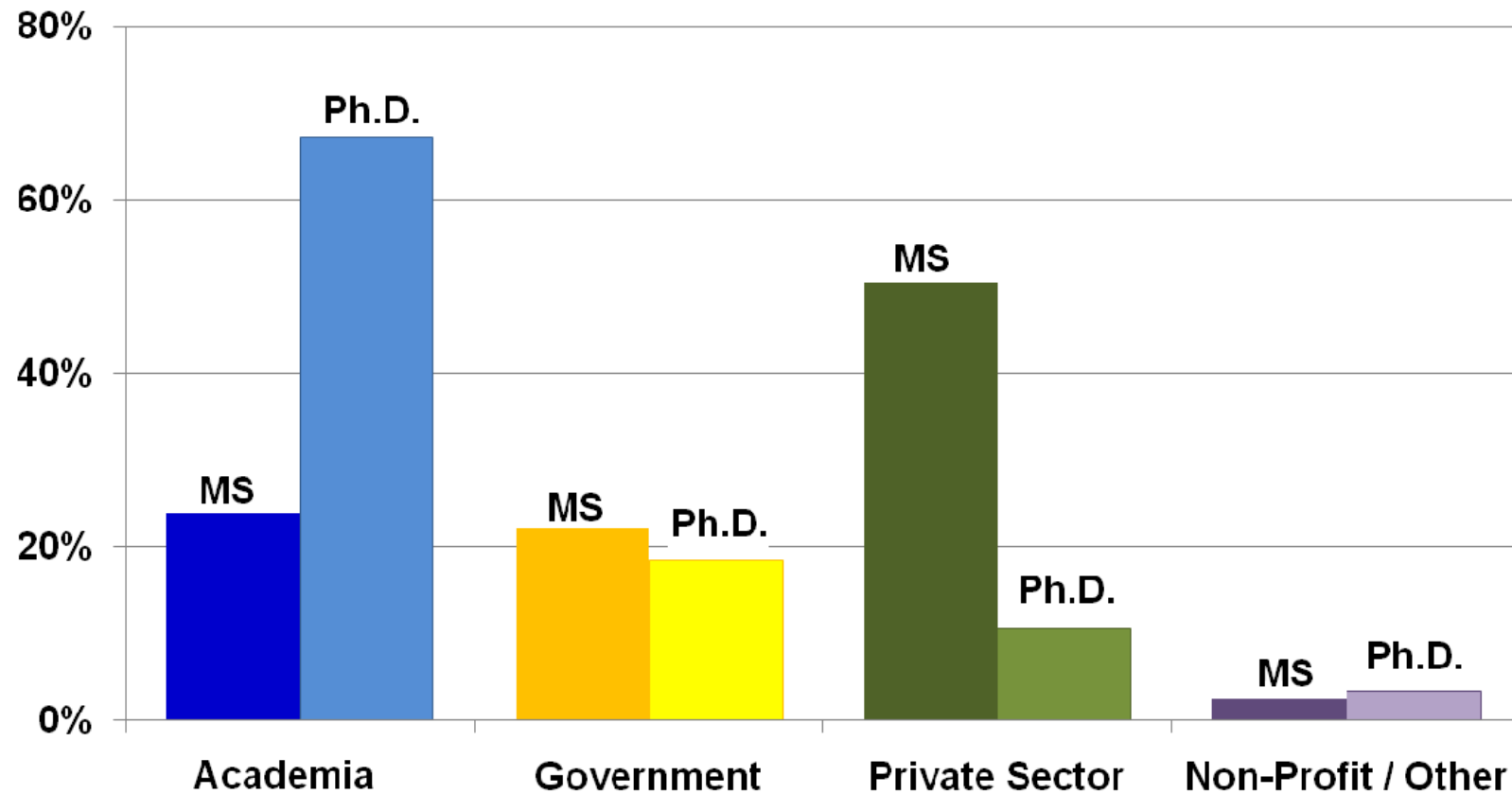
## Geoscience Degree Completion Rates and the Price of Oil (1973-2007)



Source: AGI Geoscience Workforce Program, data derived from AGI's Directory of Geoscience Departments, and [http://inflationdata.com/inflation/Inflation\\_Rate/Historical\\_Oil\\_Prices\\_Table.asp](http://inflationdata.com/inflation/Inflation_Rate/Historical_Oil_Prices_Table.asp)

# Student-to-Professional Transition

## Major Sectors of Employment



Source: AGI Geoscience Workforce Program, data derived from AGI/AGU Surveys of New Geoscience Masters and Ph.D.'s



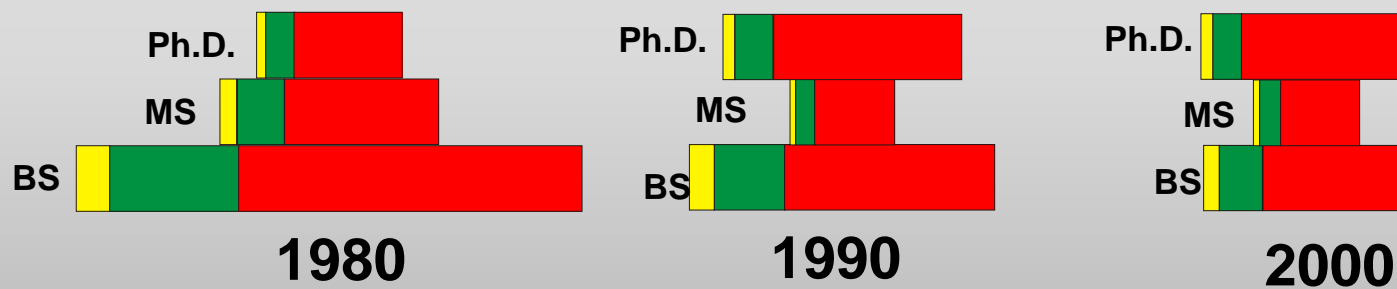
# Geoscience Workforce


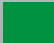
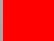
<b>Starting Salaries for New Geoscience Master's, 2007</b>		
	<b>Average</b>	<b>Median</b>
<b>Oil &amp; Gas</b>	\$81,300	\$82,500
<b>Environmental</b>	\$47,500	\$45,500
<b>Government</b>	\$46,200	\$45,000

<b>Starting Salaries for New Geoscience Ph.D.'s, 2007</b>		
	<b>Average</b>	<b>Median</b>
<b>Postdoc-Academia</b>	\$43,100	\$42,000
<b>Postdoc-Government</b>	\$55,200	\$53,000
<b>Potentially Permanent - Academia</b>	\$51,900	\$52,500
<b>Private Sector</b>	\$72,500	\$71,000

Source: AGI Geoscience Workforce Program, data derived from AGI/AGU Surveys of New Geoscience Masters and Ph.D.'s

# Degree-Granting Diversity



-  Departments granting over 25% of all degrees
-  Departments granting the second quartile of all degrees
-  Departments granting the second half of all degrees

— 100 Departments