

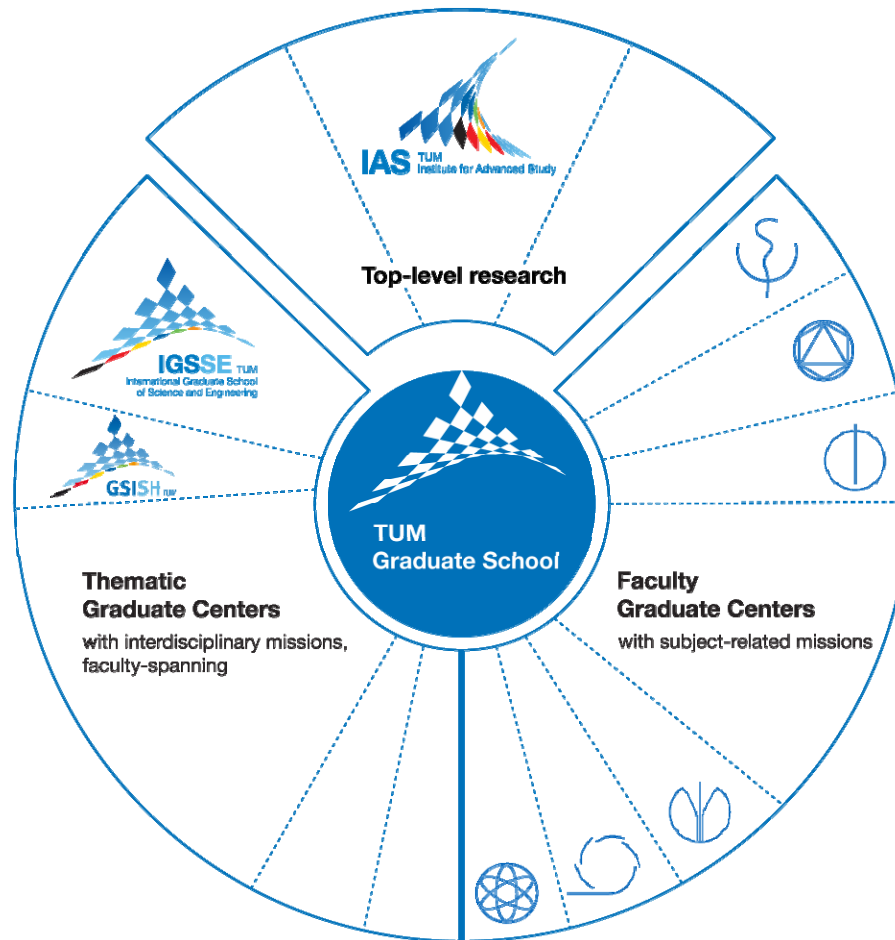


**“Addressing National Priorities through  
Interdisciplinary Programs: Opportunities  
for Graduate School Leadership”**

**Ernst Rank  
TUM Graduate School  
Technische Universität München**

December 5, 2009

# TUM Graduate School: Structure



# International Graduate School of Science and Engineering

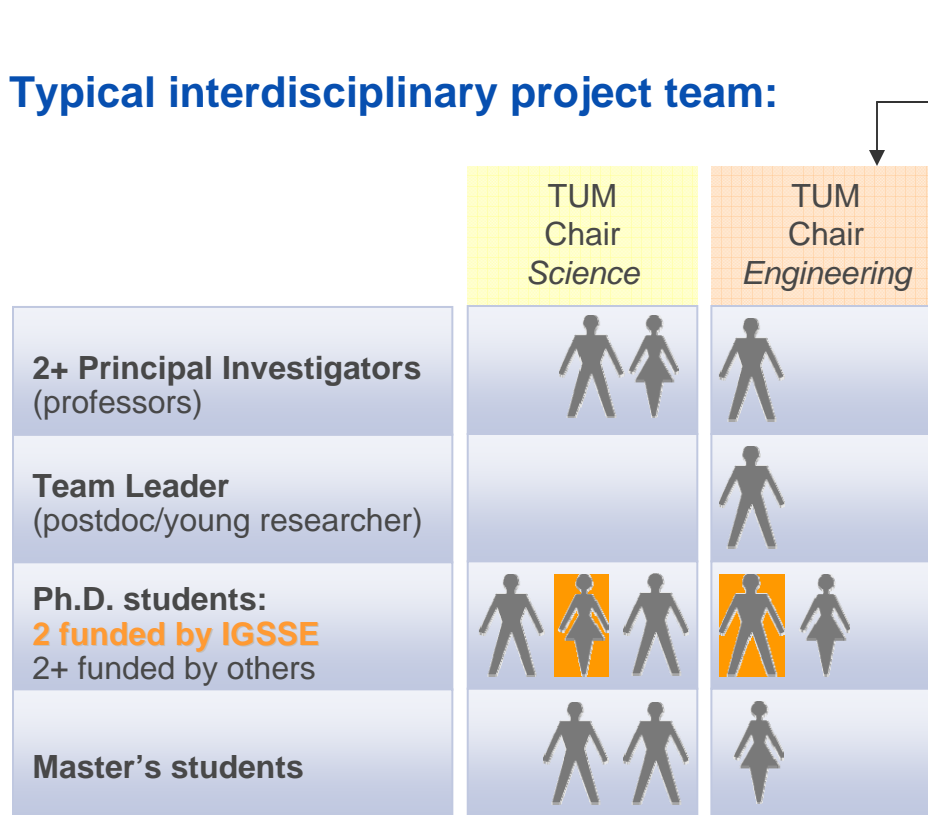
## *From invention to innovation*

### Typical interdisciplinary project team:

	TUM Chair Science	TUM Chair Engineering
<b>2+ Principal Investigators</b> (professors)		
<b>Team Leader</b> (postdoc/young researcher)		
<b>Ph.D. students:</b> <b>2 funded by IGSSE</b> 2+ funded by others		
<b>Master's students</b>		



**Typical interdisciplinary project team:**



**International or industry- sponsored project team:**

- Half the team @ TUM, half @ partner institution
- Regular and frequent communication & cooperation

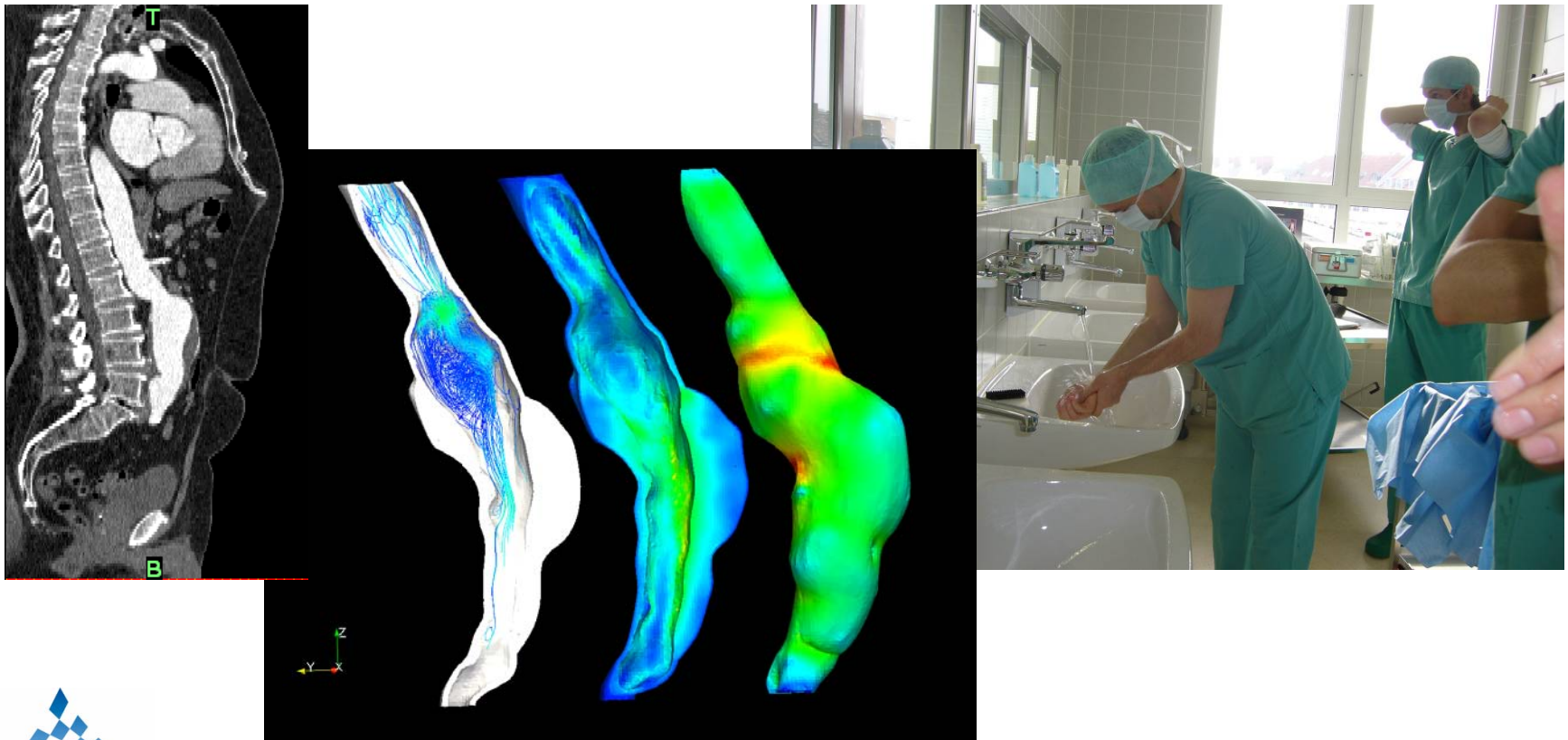
**Current international/industrial project teams:**

- Stanford, DTU Copenhagen, NUS Singapore, Nanjing Univ. Tsinghua Univ., Fudan Univ.
- NASA, DLR
- Siemens, General Electric, BASF, EADS, Fujitsu, SOFiSTiK, Tyczka Energie, Süd-Chemie

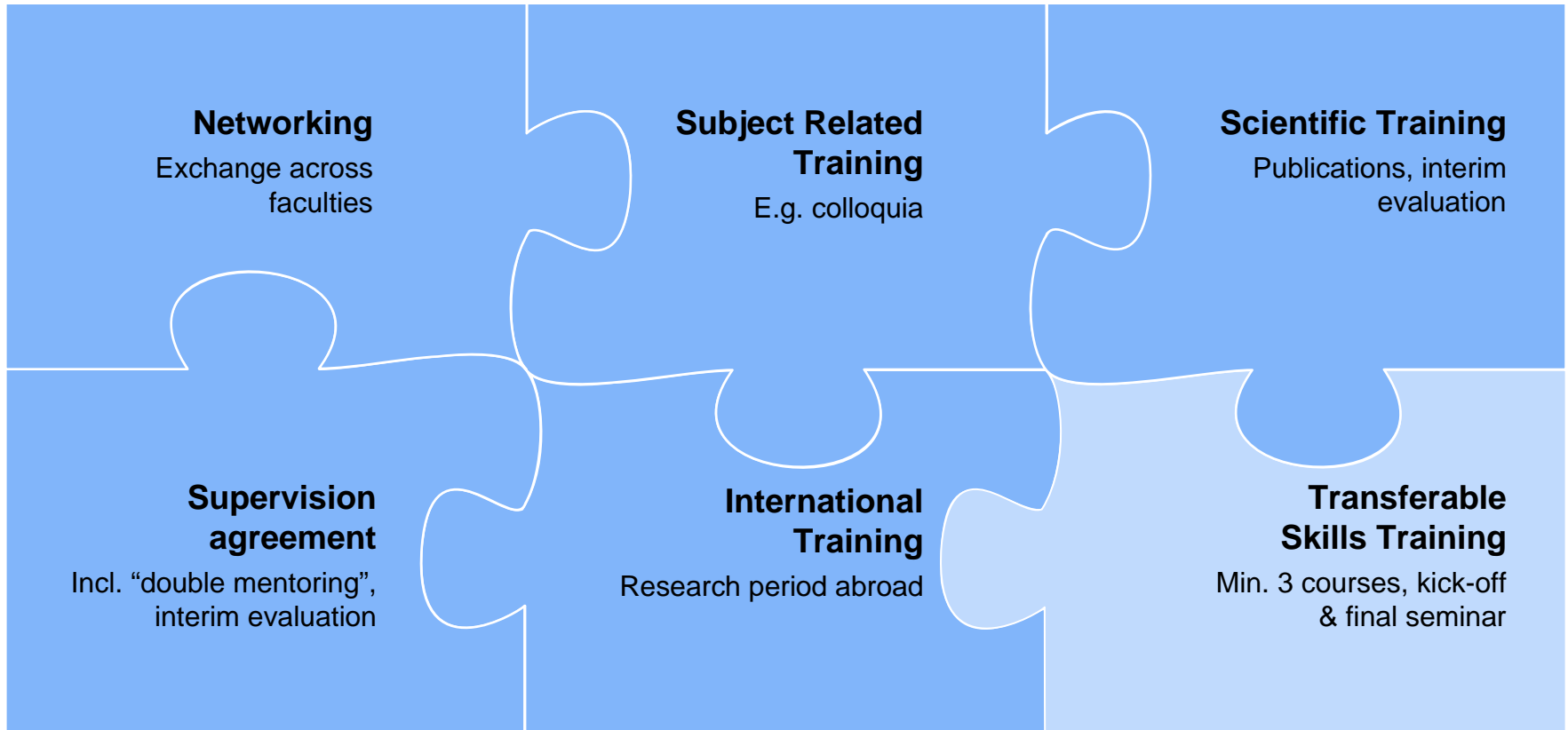


# One out of forty projects: Risk Evaluation for Abdominal Aortic Aneurysms Rupture

Gee, Eckstein, Reeps, Navab, Schwaiger, Wall, Baust, Demirci, Maier



# TUM Graduate School: Research Training Program



# Kick-Off Seminar, 24-27 November 2009, Abbey Frauenwörth, Frauenchiemsee

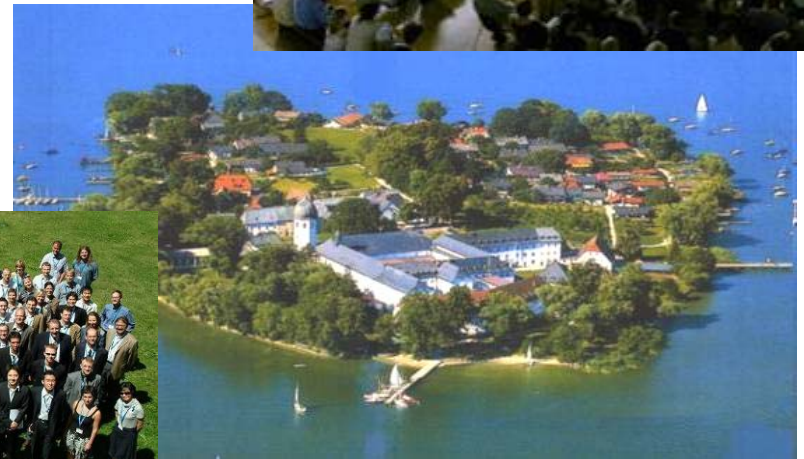
## Networking

## Transferable Skills Trainings

- E.g. scientific paper writing, research methods, communication & presentation, project management, time management, philosophy of science, etc.

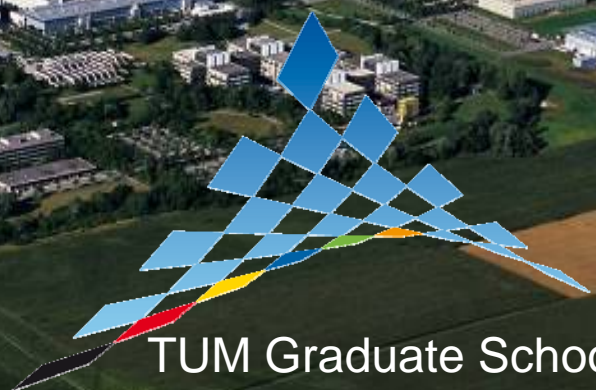
## Workshops

with senior scientists  
on science, engineering  
and society









TUM Graduate School  
Technische Universität München

December 5, 2009