

The Humanities Indicators & Graduate Education: Light and Shadow

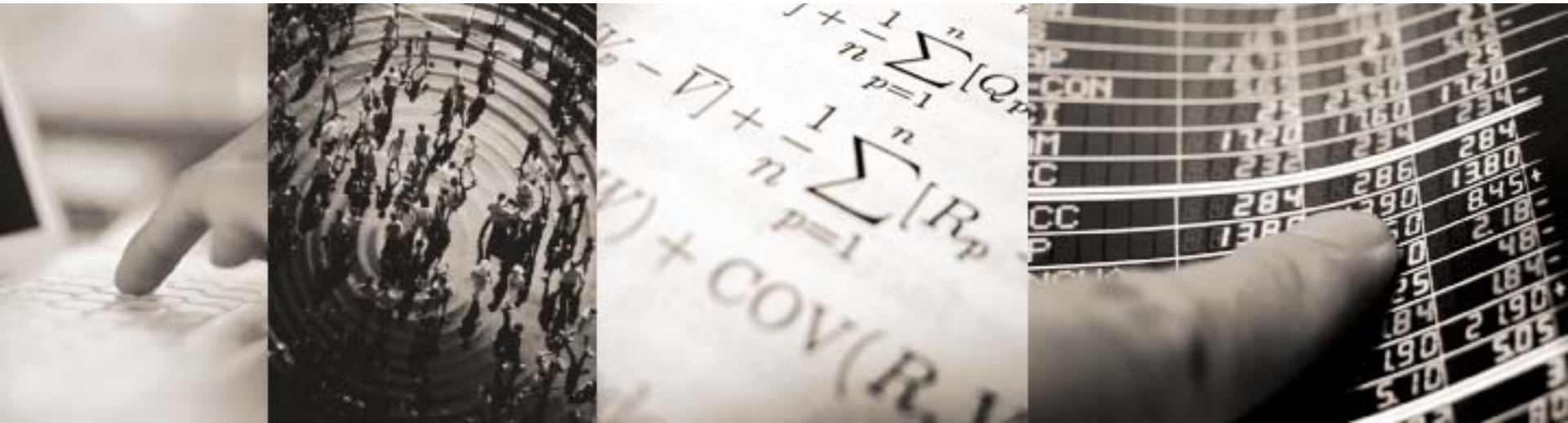
Carolyn Fuqua (fuqua-carolyn@norc.org)

Council of Graduate Schools Annual Meeting

Washington, DC

Dec 2, 2010

NORC AT THE UNIVERSITY OF CHICAGO
A National Organization for Research and Computing

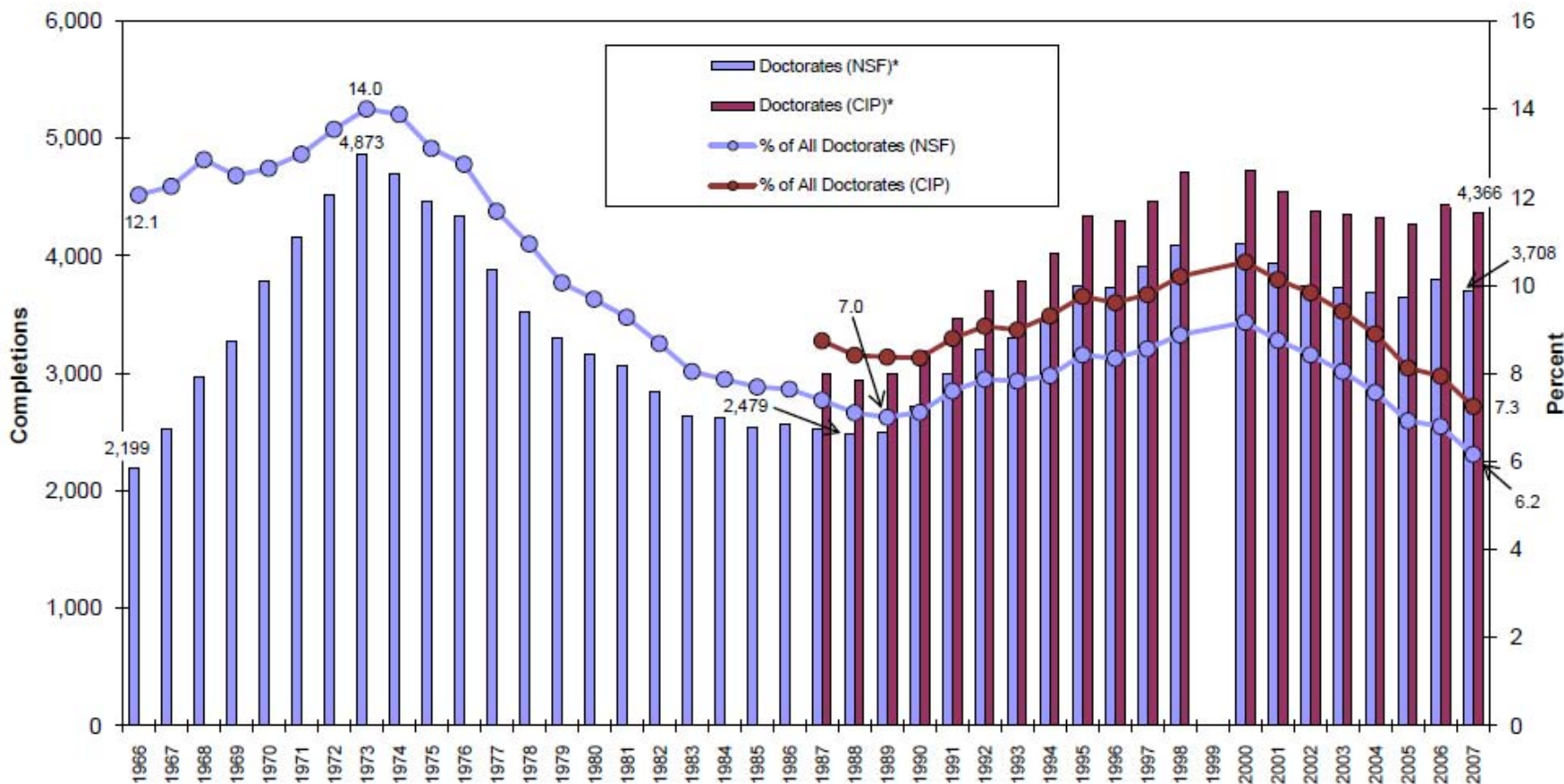




What is an indicator?

- Quantitative data
- Change over time
- Descriptive, not explanatory—open to multiple interpretations
- Provides an empirical foundation for debate, policy formation

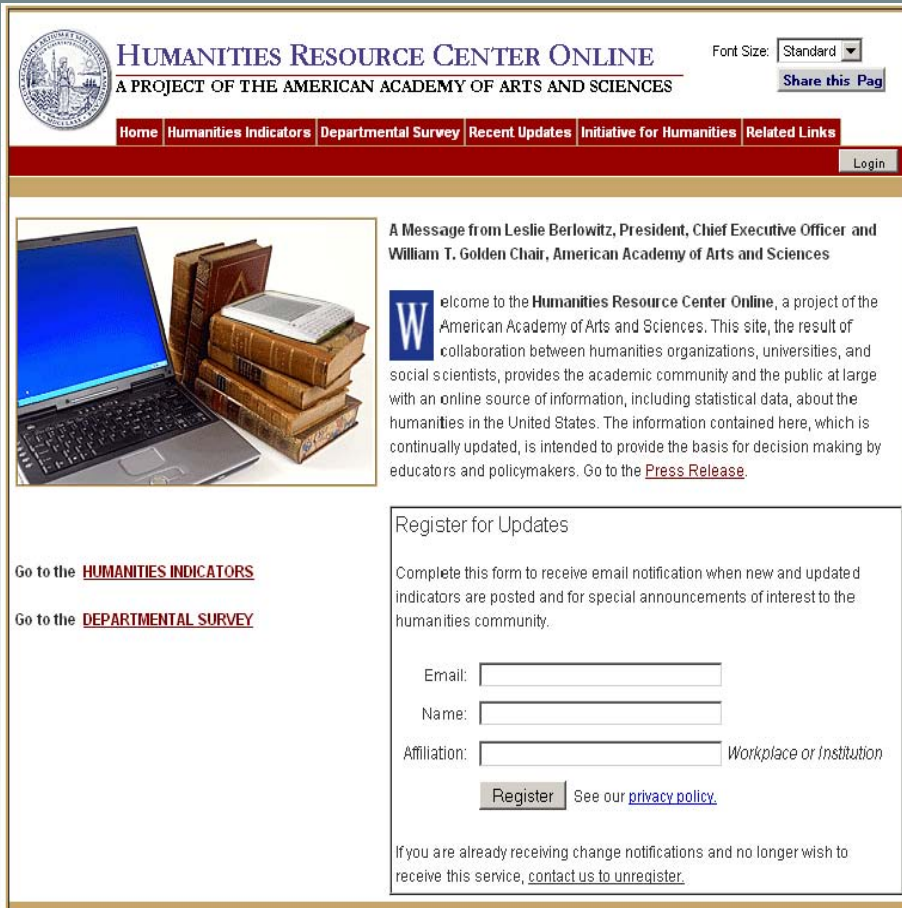
Figure II-10b: Doctoral Degree Completions in the Humanities (Absolute Number and as a Percentage of All Doctoral Degree Completions), 1966–2007



* Please see "Note on the Data Used to Construct Degree-Related Indicators" for an explanation of the differences between the two trend lines.

Source: U.S. Department of Education, Institute of Education Sciences, National Center for Education Statistics, Integrated Postsecondary Data System; accessed via the National Science Foundation's online integrated science and engineering resources data system, WebCASPAR.

An overview



HUMANITIES RESOURCE CENTER ONLINE
A PROJECT OF THE AMERICAN ACADEMY OF ARTS AND SCIENCES

Font Size: [Share this Page](#)

[Home](#) [Humanities Indicators](#) [Departmental Survey](#) [Recent Updates](#) [Initiative for Humanities](#) [Related Links](#)

A Message from Leslie Berlowitz, President, Chief Executive Officer and William T. Golden Chair, American Academy of Arts and Sciences

Welcome to the **Humanities Resource Center Online**, a project of the American Academy of Arts and Sciences. This site, the result of collaboration between humanities organizations, universities, and social scientists, provides the academic community and the public at large with an online source of information, including statistical data, about the humanities in the United States. The information contained here, which is continually updated, is intended to provide the basis for decision making by educators and policymakers. Go to the [Press Release](#).

Register for Updates

Complete this form to receive email notification when new and updated indicators are posted and for special announcements of interest to the humanities community.

Email:

Name:

Affiliation: *Workplace or Institution*

See our [privacy policy](#).

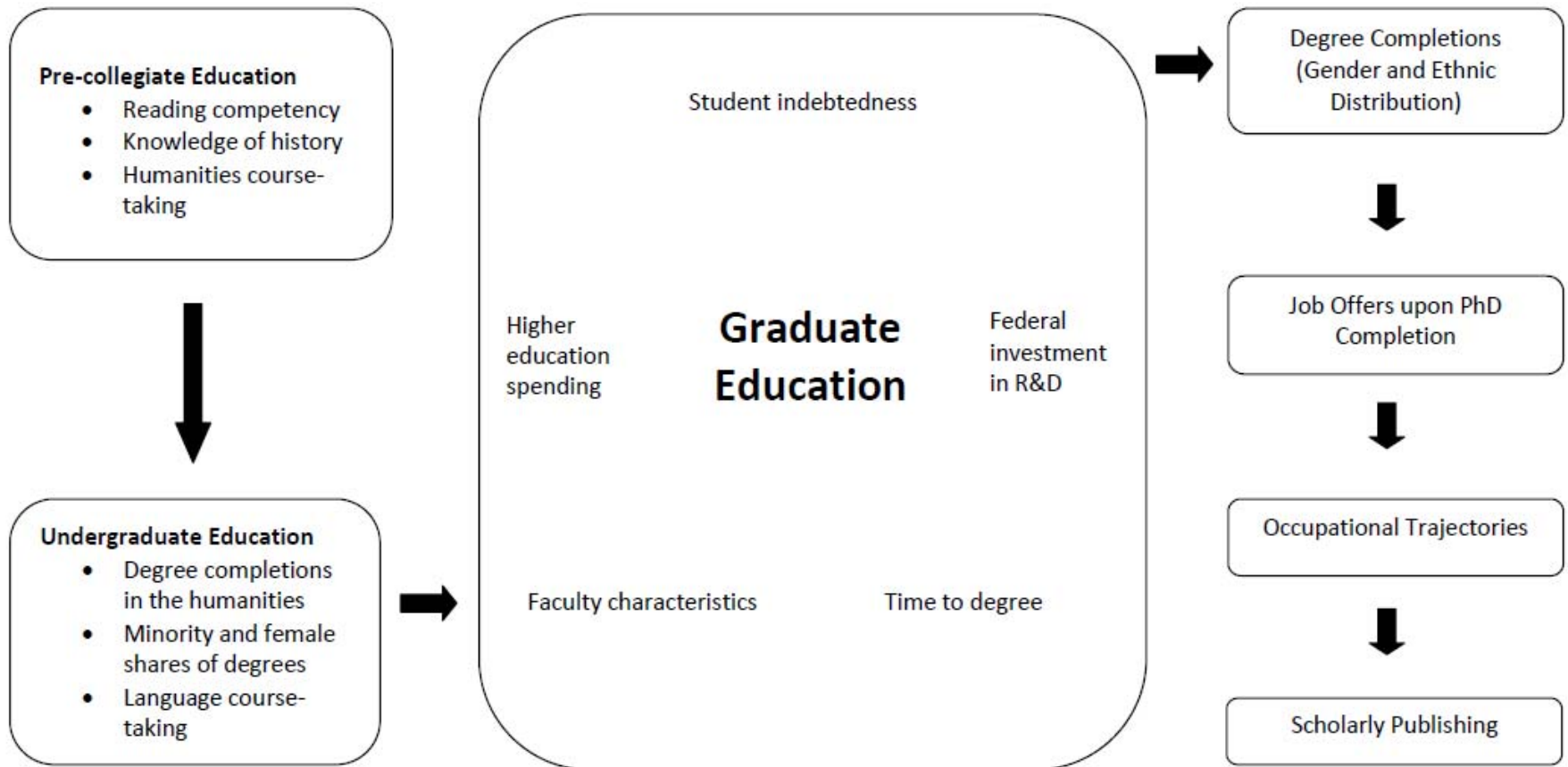
If you are already receiving change notifications and no longer wish to receive this service, [contact us to unregister](#).

Go to the [HUMANITIES INDICATORS](#)

Go to the [DEPARTMENTAL SURVEY](#)

- Online resource only-- humanitiesindicators.org
- 74 indicators
- Drawing on over 50 public and private data sources
- National picture
- Predicated on a broad conception of the humanities

Inputs, outputs, and context of graduate education



Deep shadow: loss of data on faculty



National Study of Post Secondary Faculty

- Was only source of comprehensive, nationally-representative data on the characteristics and working conditions of humanities faculty
- Last administered in 2004
- Helping fill the void: the AAAS' Humanities Departmental Survey



Humanities Departmental Survey

- Numbers and characteristics of faculty, students
- Disciplines profiled:

Art History

English

Foreign Languages

History

History of Science

Linguistics

MLA Combined English / Foreign Languages

Religion

- Findings available at humanitiesindicators.org under the “Departmental Survey” tab