

# Promoting Student Matriculation to Graduate School

December 3, 2010  
CGS Annual Conference

Larry Griffith



Gates Millennium Scholars

# Gates Millennium Scholars Program

## Our Purpose

The Gates Millennium Scholars (GMS) program, established in 1999, is a 1.6 billion dollar initiative funded by grant from the Bill & Melinda Gates Foundation.

The goal of GMS is to promote academic excellence and to provide an opportunity for 20,000 outstanding students with significant financial need to reach their full potential.



# About the Program

- UNCF- the United Negro College Fund is the administrator of the GMS initiative and has partnered with the following organizations:
- Asian & Pacific Islander American Scholarship Fund
- American Indian Graduate Center Scholars
- Hispanic Scholarship Fund





# GMS Program Overview

## Eligibility Criteria

- African American, American Indian/Alaska Native, Asian Pacific American or Hispanic Americans;
- Citizens/permanent residents of the United States;
- Cumulative GPA of 3.3 on a 4.0 scale;
- Matriculation for the first time at an accredited college or university as full-time, degree-seeking freshmen in the fall of 2011, with exception of students jointly enrolled in high school and college ; GED recipients are also eligible
- Significant demonstrated financial need as defined by *Federal Pell Grant eligibility criteria*; and
- Demonstrated leadership commitment through participation in community service, extracurricular or other activities that reflect leadership abilities.





# GMS Program Overview

## Scholarship Awards

- Since 2000, GMS has awarded over \$630 million in scholarships to African American, American Indian/Alaska Native, Asian Pacific American or Hispanic Americans; of which \$107.7 million has funded Gates Scholars in graduate school
- The average award from 2001-2010 is \$11,593 and for graduate Gates Scholars \$21,979
- GMS has funded over 14,000 Scholars at over 1,500 colleges and universities of which 2,470 are graduate Gates Scholars at 530 different colleges and universities
- Gates Scholars represent 50 states and all American territories and commonwealths combined undergraduate and graduate scholarships





# GMS Program Overview

## Graduate Funding

- Provides graduate degree funding for continuing Scholars in: mathematics, computer science, science, engineering, education or library science, and public health
- For AY 10-11 GMS funds graduate Gates Scholars up to \$34,693 at private institutions and \$24,109 at public institutions based on the unmet need determined by the financial aid award letter provided by the institution
- Renews and increases annually based on satisfactory academic progress, full-time\* enrollment and timely submission of required documents

*\* At the Doctoral level the enrollment requirement is based on the Gates Scholars' status as defined by the institution*



# GMS Graduate Funding Eligibility Criteria

- The Graduate Program Inquiry Form (GPIF) is a document used by Gates Scholars to inquire about the funding eligibility of a graduate program
- Gates Scholars are required to submit the GPIF along with the program's description, their planned concentration and the program's curriculum information, prior to the desired matriculation date
- Once the program has been reviewed by GMS a decision is sent to the Gates Scholar via his/her email address
- Based on GMS' guidelines, if the program is ineligible for funding, Gates Scholars are encouraged to speak with a representative from GMS to identify programs that both may be eligible for funding and encompass the Scholar's educational interest
- Gates Scholars will not receive graduate funding until a GPIF has been submitted, reviewed and approved by GMS





# Deferment Options

- GMS recognizes that Gates Scholars may need time during their academic experience to defer funding. There are three types of deferment:
  - Discretionary (Academic, Personal Hardship, Transitional)
  - Circumstantial(Medical, Service)
  - Graduate (Teaching/Public Health, Master's, M.D., Doctoral)
- Gates Scholars have one year of Discretionary Deferment and may use it in any number of ways which include, but are not limited to:
  - Preparing for, and taking, standardized tests
  - Gaining employment experience
  - Researching potential programs for graduate school
- Gates Scholars are offered deferment in an effort to increase graduation rates and decrease attrition rates







# GMS' Endeavors to Increase Awareness of Graduate Programs & Fee Reduction/ Waivers

- **Graduate School Institutes (GSI)**

- Tulane (Public Health)

- We connect with institutions and host events on their campuses to increase Gates Scholars' graduate funding/program awareness

- Center for Disease Control Conference

- Pre-existing conference to encourage students to pursue careers in public health through exploration of public health and to network with professionals in the field

- Southern Regional Education Board Institute on Teaching and Mentoring

- Largest meeting of doctoral candidates of color in the United States

- American Library Association Conference

- Professionals in the field encourage Scholars to pursue careers in library science through exploration of the field

- **Fee Waivers**

- Graduate Record Examination (GRE) Fee Reduction Certificates

- Schools of Public Health Application Service ( SOPHAS) Fee Waivers



# GMS' Endeavors to Increase Awareness of Graduate Programs & Fee Reduction/ Waivers

## •Leadership Conferences

### •Alumni Sessions

- Added to demystify the graduate school application process and to provide GMS Scholars with important information on how to navigate graduate school

### •Information Mall

- Information made available to students regarding the 7 funded areas of study

### •Graduate Education Videos on the 7 funded areas

- In continuous play at the GMS Knowledge Center and on-line

## •Leadership Academies

- One-day, mini-conferences that allow Scholars and Alumni to self-select workshops that focus on preparing for, and attending, graduate school

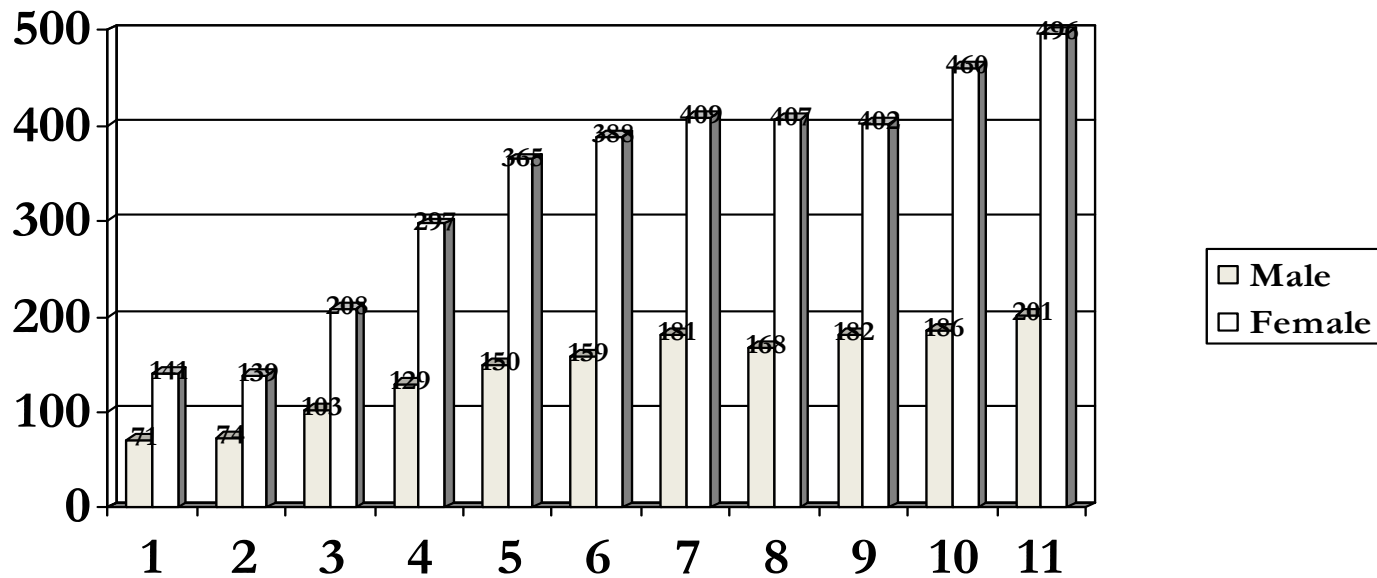
## •Social Networking

### •GMS Scholar Connection

- Updated messaging, use of chat and blog features to increase awareness of the 7 funded areas of study



## Graduate School matriculation in GMS supported and sponsored programs

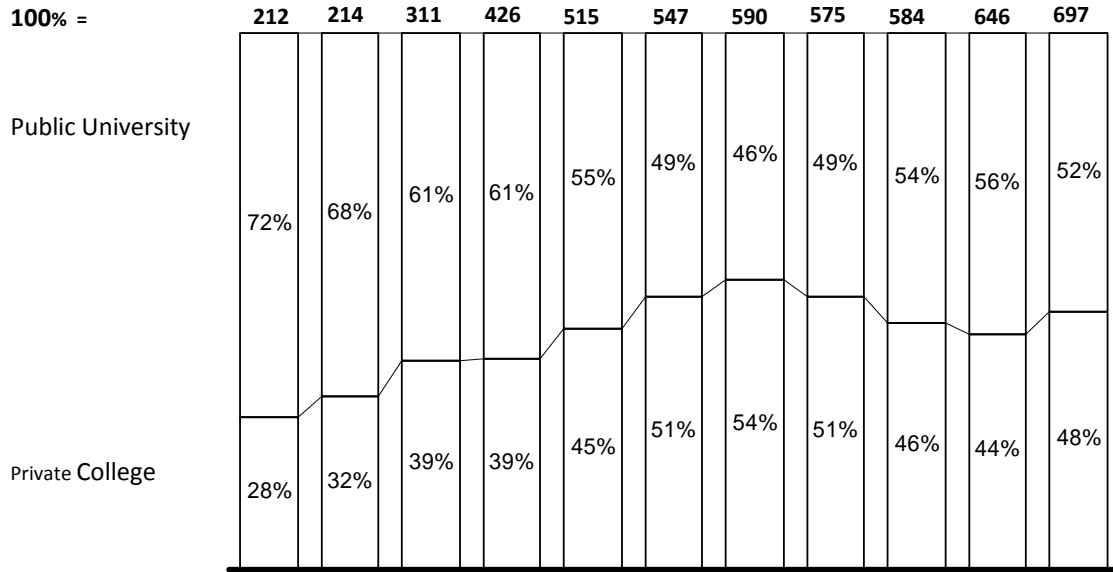


# Top 10 Graduate Institutions 2010-2011 (Fall)

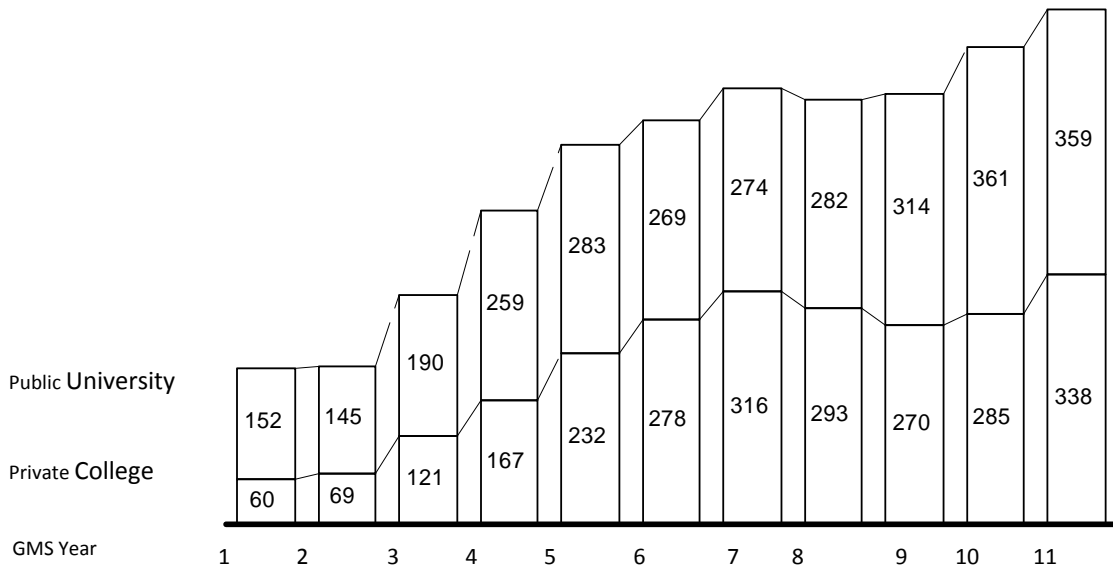
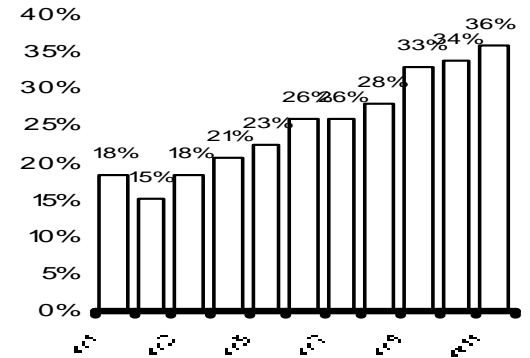
<i>Rank</i>	<i>Inst_Name</i>	<i>Grand Total</i>	<i>%AA</i>	<i>%AI</i>	<i>%AP</i>	<i>%HA</i>
1	University of Southern California	20	20%	0%	10%	70%
2	University of California-Los Angeles	17	24%	0%	41%	35%
3	University of Michigan-Arn Arbor	17	41%	0%	24%	35%
4	Teachers College, Columbia University	16	25%	0%	50%	25%
5	Johns Hopkins University	14	50%	7%	21%	21%
6	New York University	14	50%	0%	0%	50%
7	Emory University	12	50%	8%	33%	8%
8	George Washington University	11	36%	9%	27%	27%
9	University of Arizona	11	0%	73%	0%	27%
10	Capella University	10	90%	10%	0%	0%
10	Columbia University in the City of New York	10	50%	0%	30%	20%
10	Walden University	10	100%	0%	0%	0%

*Legend, AA= African American, AI= American Indian, AP= Asian Pacific Islander, HA= Hispanic American*

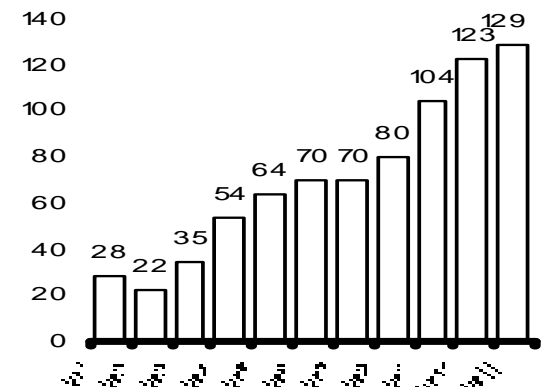
# PUBLIC PRIVATE DISTRIBUTION OF GATES GRADUATE SCHOLARS, GMS YEAR 1-11



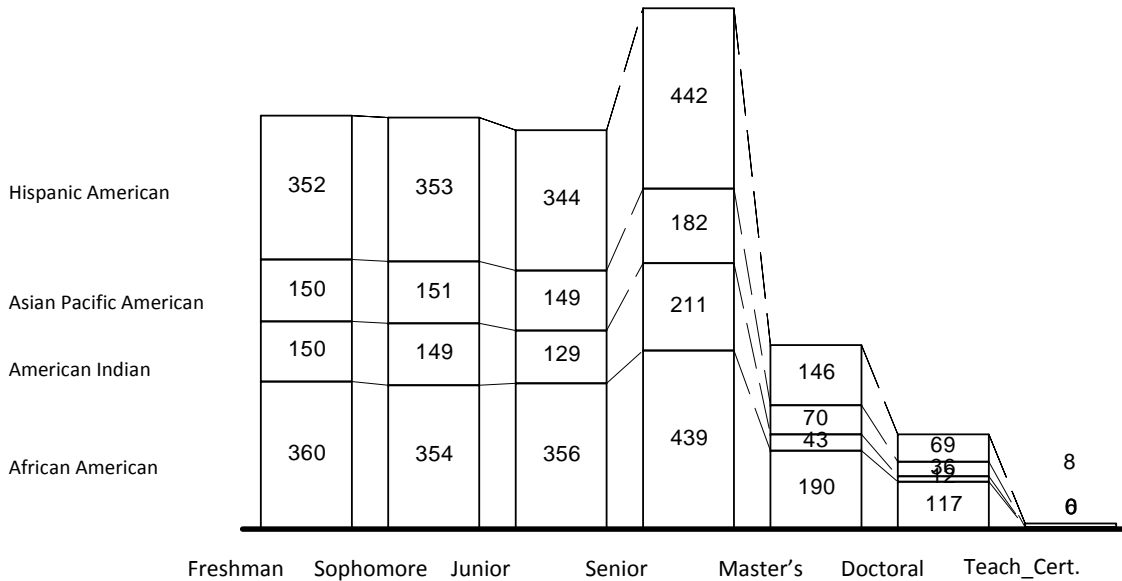
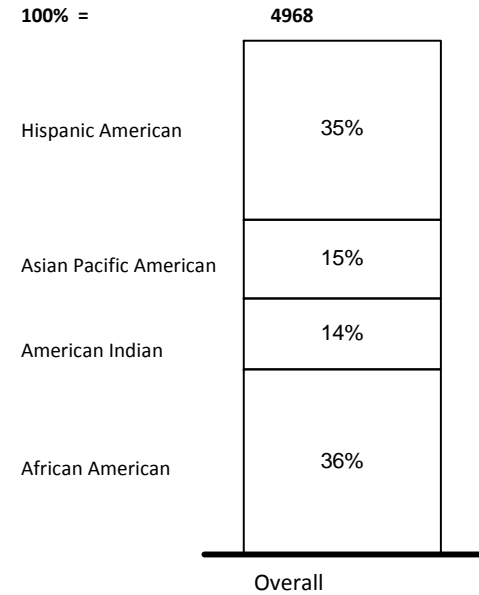
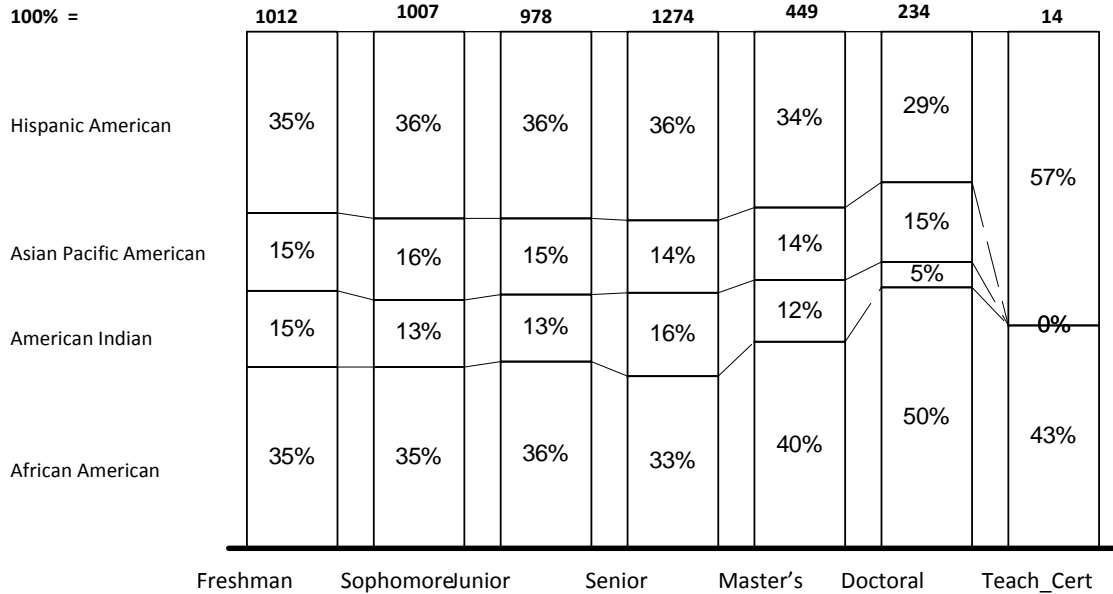
**% of Scholars attending out of state Public universities**



**# of Scholars attending out of state Public universities**

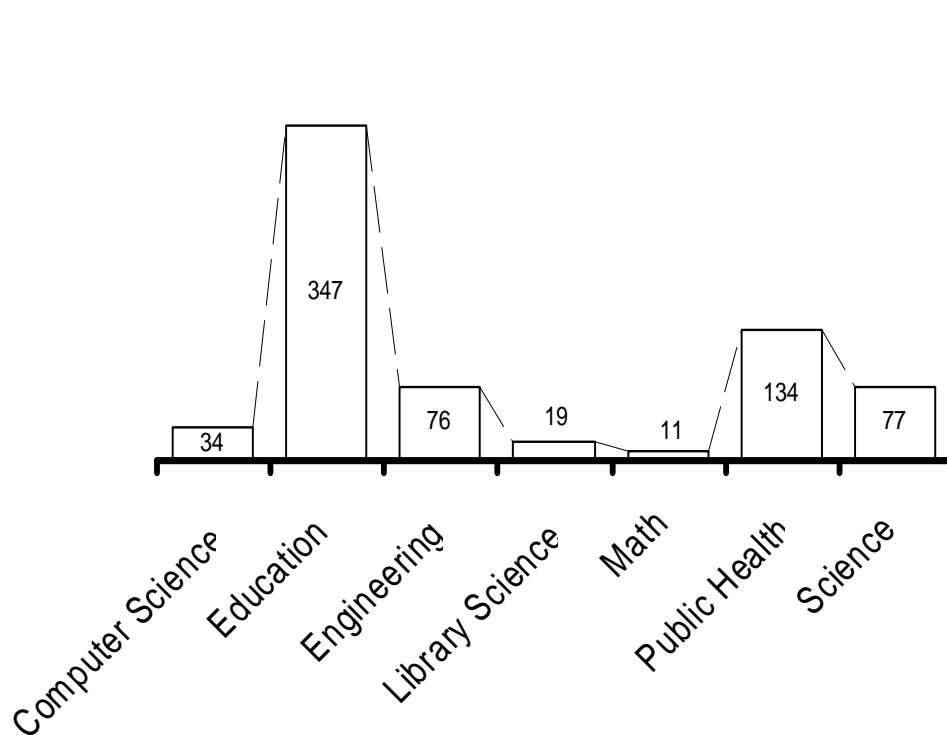


# 2010-2011 DISTRIBUTION OF ACTIVE SCHOLARS IN THE GMS PROGRAM BY ETHNICITY AND ACADEMIC CLASSIFICATION



<i>Acad Level</i>	<i>Percentage of Scholars</i>
Freshman	20.4%
Sophomore	20.3%
Junior	19.7%
Senior	25.6%
Masters	9.0%
Doctoral	4.7%
Teacher Certification	0.3%

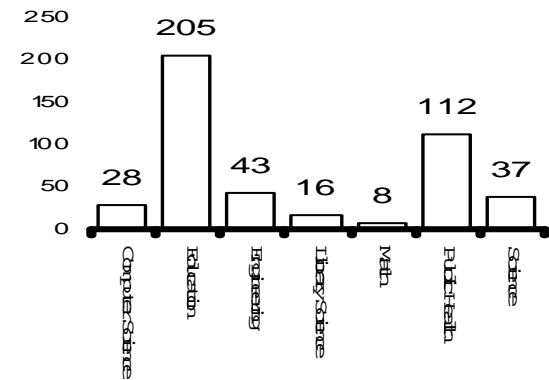
## 2010-2011 GRADUATE FIELD OF STUDY



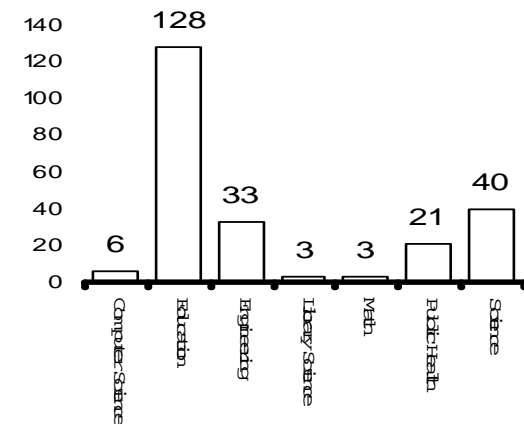
14 Scholars are enrolled in teacher certification programs

Education, Public Health and Engineering account for 80% of graduate Scholars

## Masters 2010-2011



## Doctoral 2010-2011

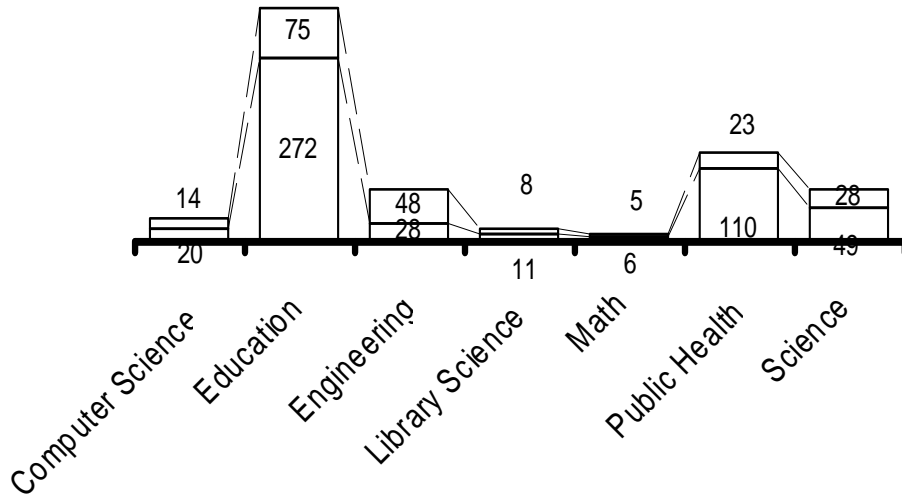




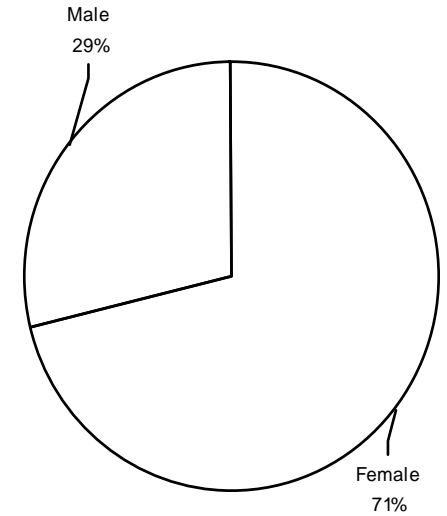
Gates  
Millennium  
Scholars

2010-2011 Graduate Field of Study by Gender

Male  
Female



GMS Graduate  
enrollment by  
gender, fall 2010



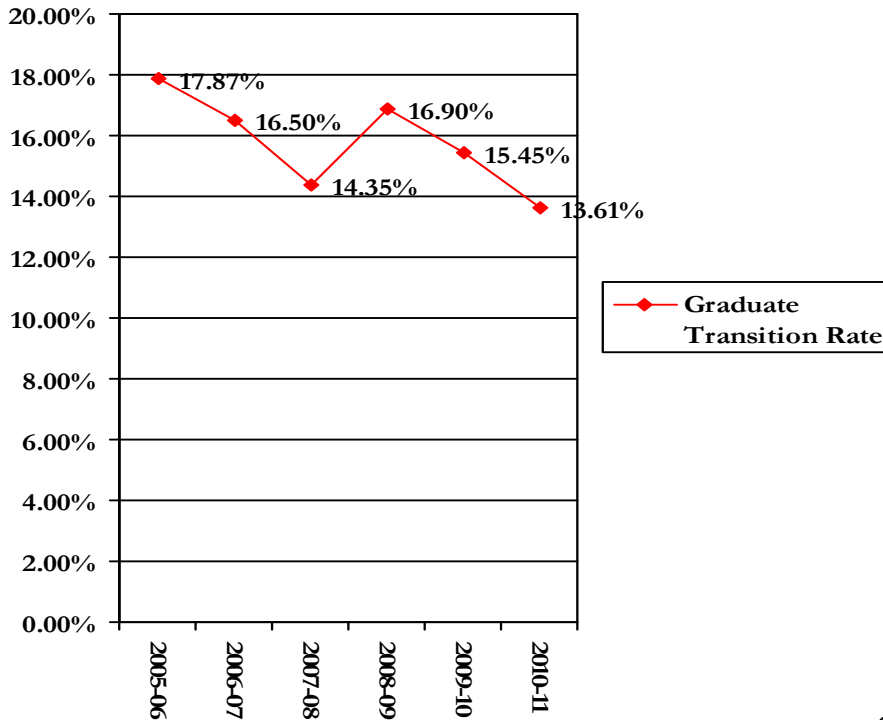


# GMS Graduation and Matriculation Rates

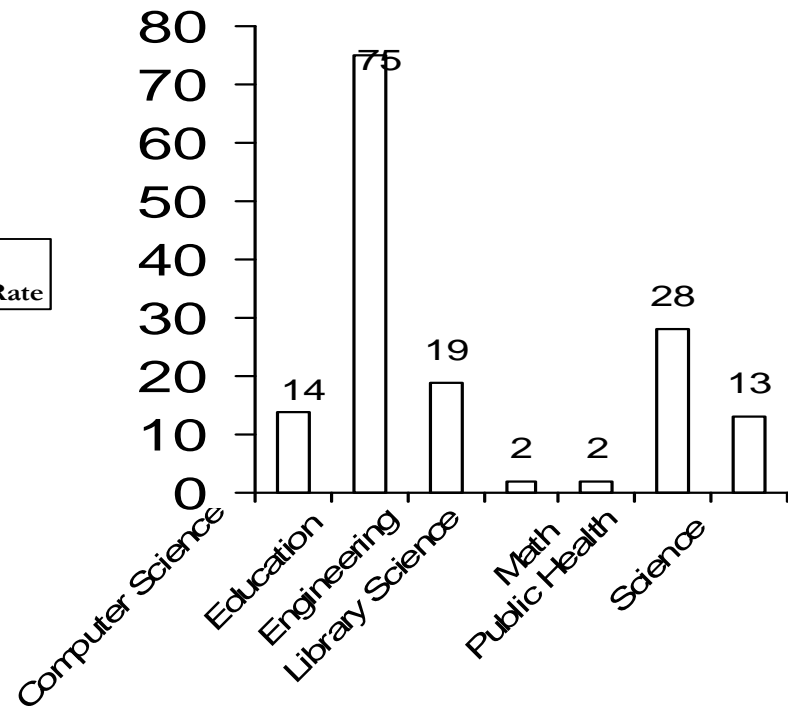


13.61 % (153) of last year's undergraduate Seniors transitioned into GMS graduate funded programs

## Graduate Transition Rate 2005-06 thru 2010-11



## Fall 2010 graduate transition by program discipline





# Challenges and Key learnings

There are many hurdles to low income students' graduate school enrollment

- Academic performance/confidence

- Career aspirations/knowledge

- Change of major (STEM disciplines)

- Fiscal resources: application/test fees, other costs

- Family and community expectations

The money is not enough: low income and first generation students require graduate school – as distinct from post professional programs – to make sense

- Knowledge gap for student, family and community

- Career/job vs. graduate school: jobs win

- Academic burnout

Gender diversity: a significant challenge





## Going Forward...

- Graduate Studies Website
- Graduate Portal for Institution Provosts, Deans, or Admissions Officers
- Academic Empowerment and Student Support Services Revamp
  - Academic Advisement
  - Academic Handbook for newly admitted Scholars
  - Webinars
  - Leadership Academies
- Cue Group / LDP Strategic Planning initiative to assess our approach to increasing the matriculation rate of our Scholars into graduate school





# Questions or Comments?

