



Tufts
UNIVERSITY

Tracking Career Outcomes for Graduate Degree Recipients

Lynne Pepall

Dean, Graduate School of Art & Sciences

CGS Annual Meeting December 2010

? Your institution is:

- (a) Research University/Very High or High
- (b) Doctoral Research University
- (c) Masters College or University/Large
- (d) Masters College or University/Small, Med
- (e) Other

Large: More than 200 degrees



Graduate School of
Arts and Sciences

? **The total student enrollment FTE
at your graduate school is:**

- (a) **Below 2000**
- (b) **2000 - 5000**
- (c) **5000 - 10,000**
- (d) **Greater than 10,000**

(FTE: full-time plus one-third part-time)



Graduate School of
Arts and Sciences

? Your graduate school grants graduate degrees in:

- (a) Arts and Sciences
- (b) Arts, Sciences and
Engineering
- (c) Education
- (d) Health Sciences
- (e) Some combination of the above

Graduate School of Arts and Sciences at Tufts:

- Enrollment roughly 1100 students
- 12 doctoral programs
- 27 masters programs, ranging from professional masters programs to academic masters
- Microcosm



Graduate School of
Arts and Sciences

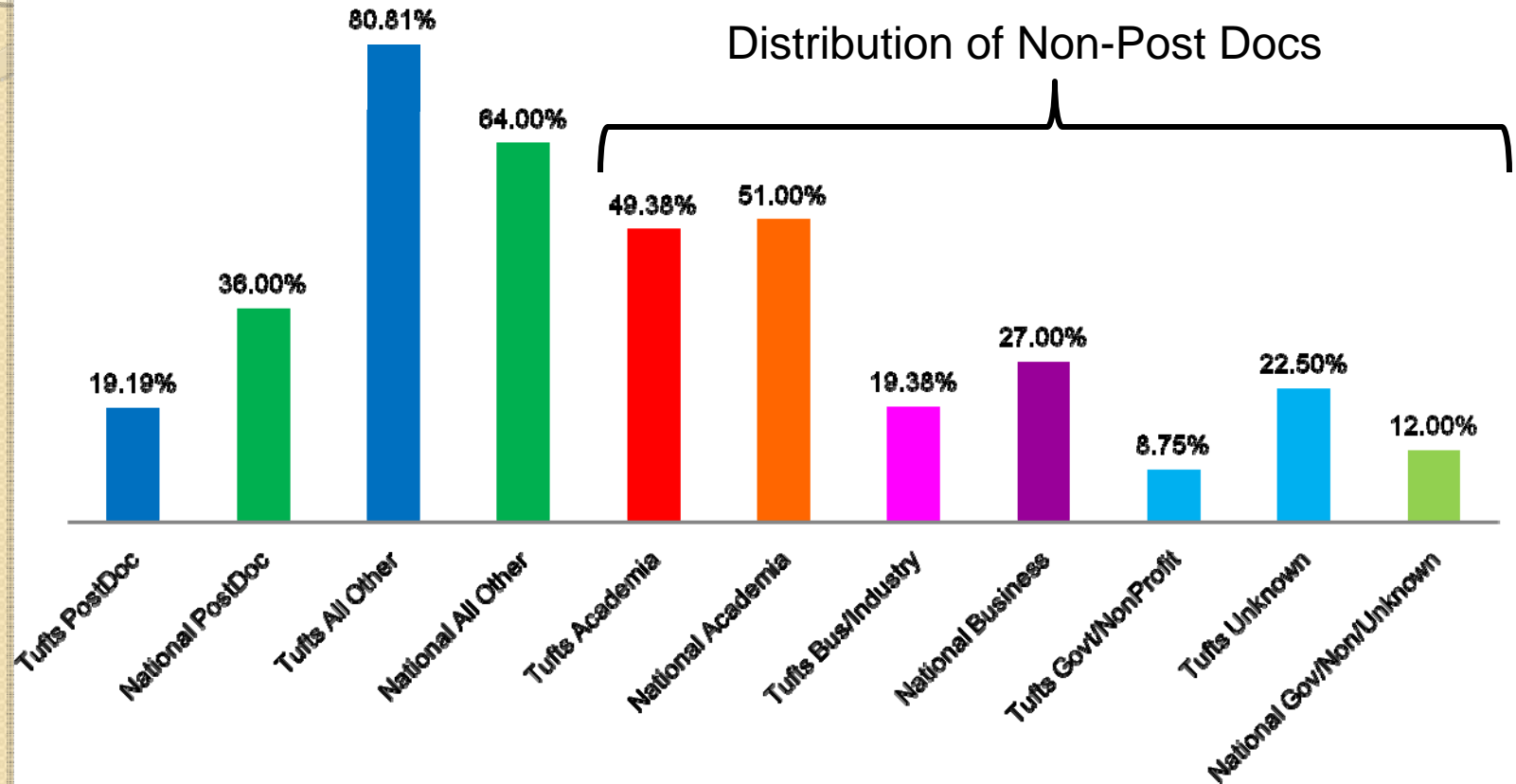
? Career tracking of graduates and alumni is done:

- (a) By program or department
- (b) By the graduate school
- (c) By alumni relations
- (d) Other
- (e) Is not done systematically by any of the above

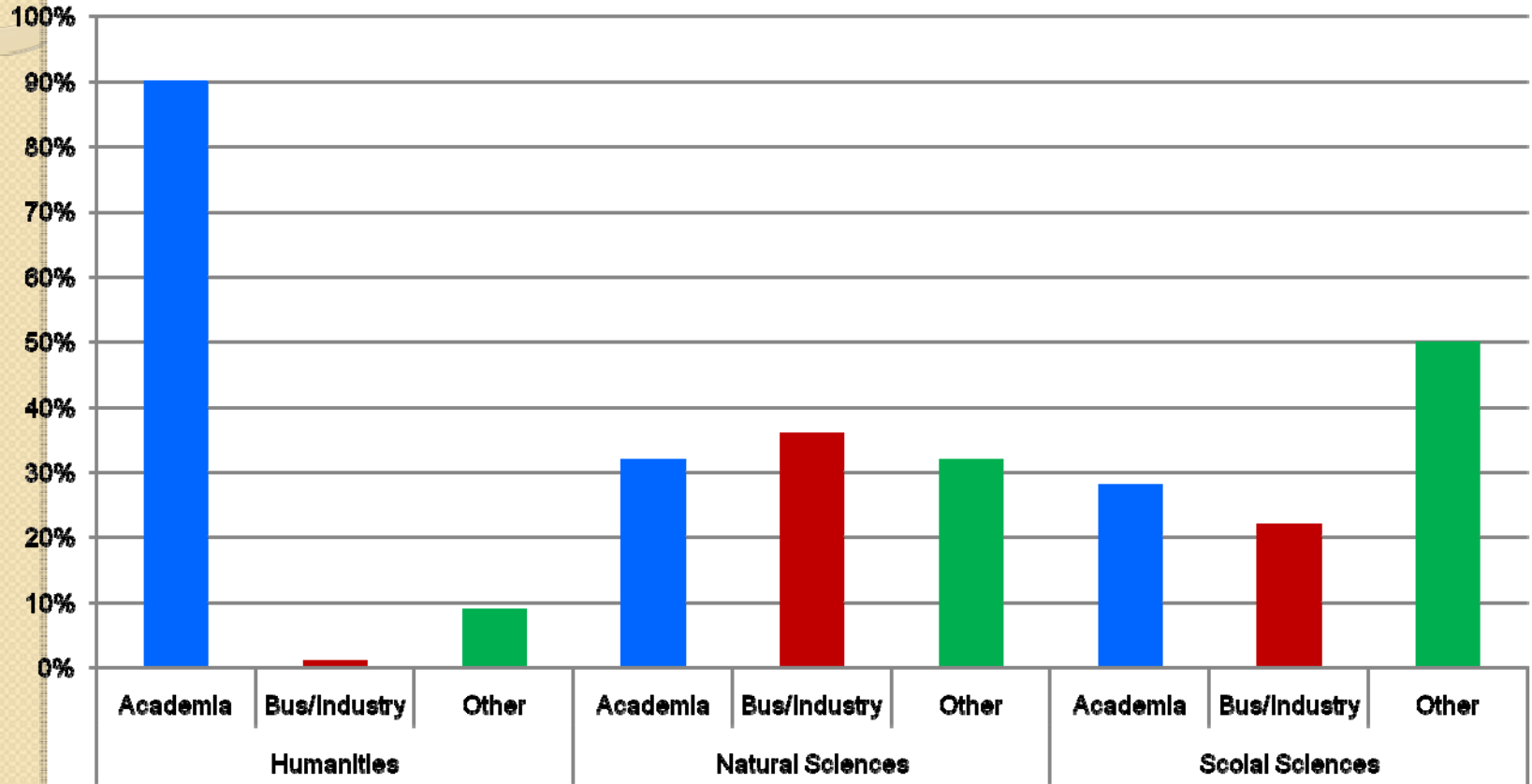
Career Tracking: Questions

- (1) Where do our graduates go?
- (2) Do they go where they expected to go?
- (3) If they had to do it again, would they pursue a graduate degree?

Where do they go? Doctorates 2005-10, compared to SED data for 2007-08



Career distribution of PhD's by discipline:

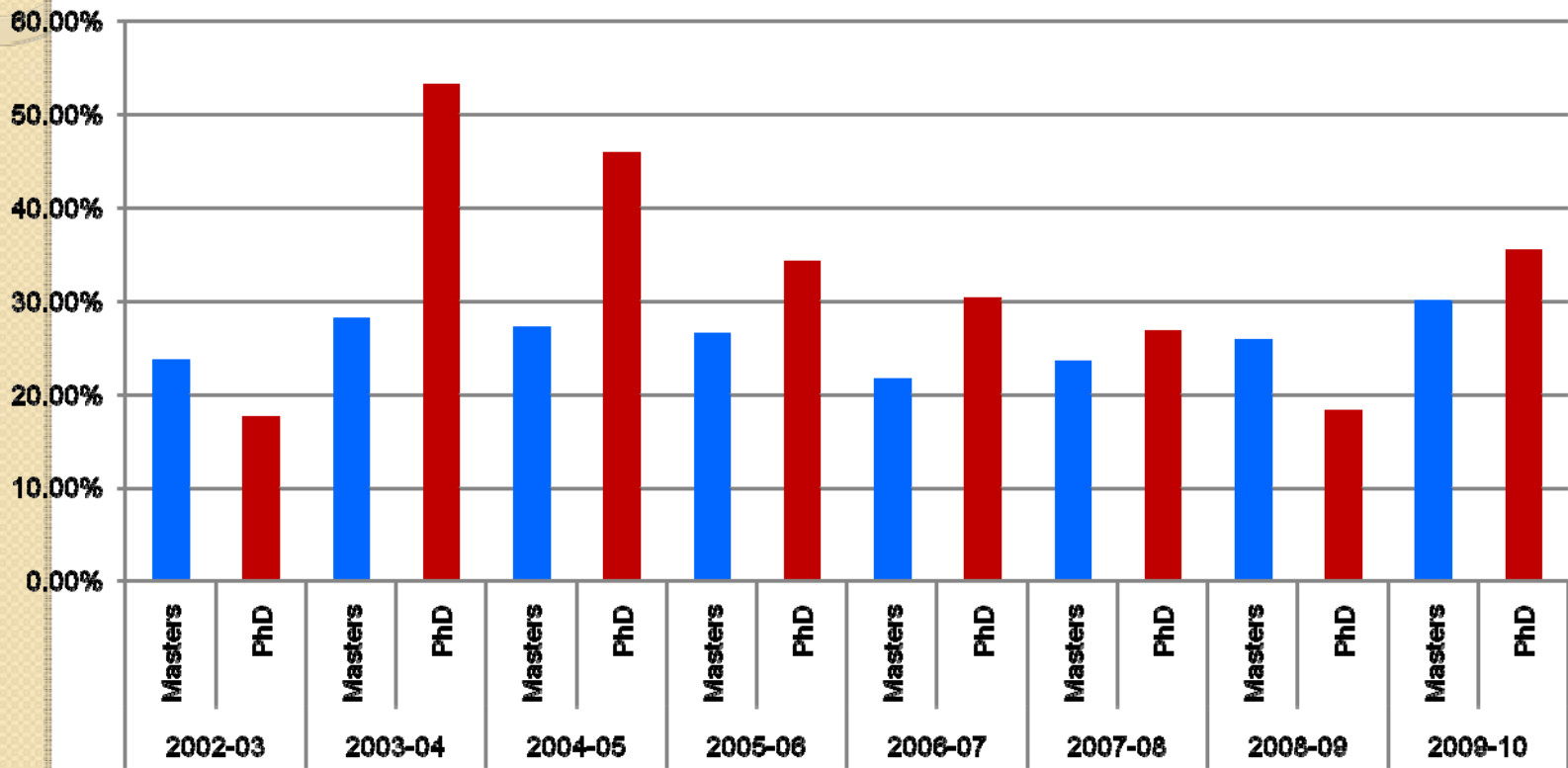


Is this what they expected?

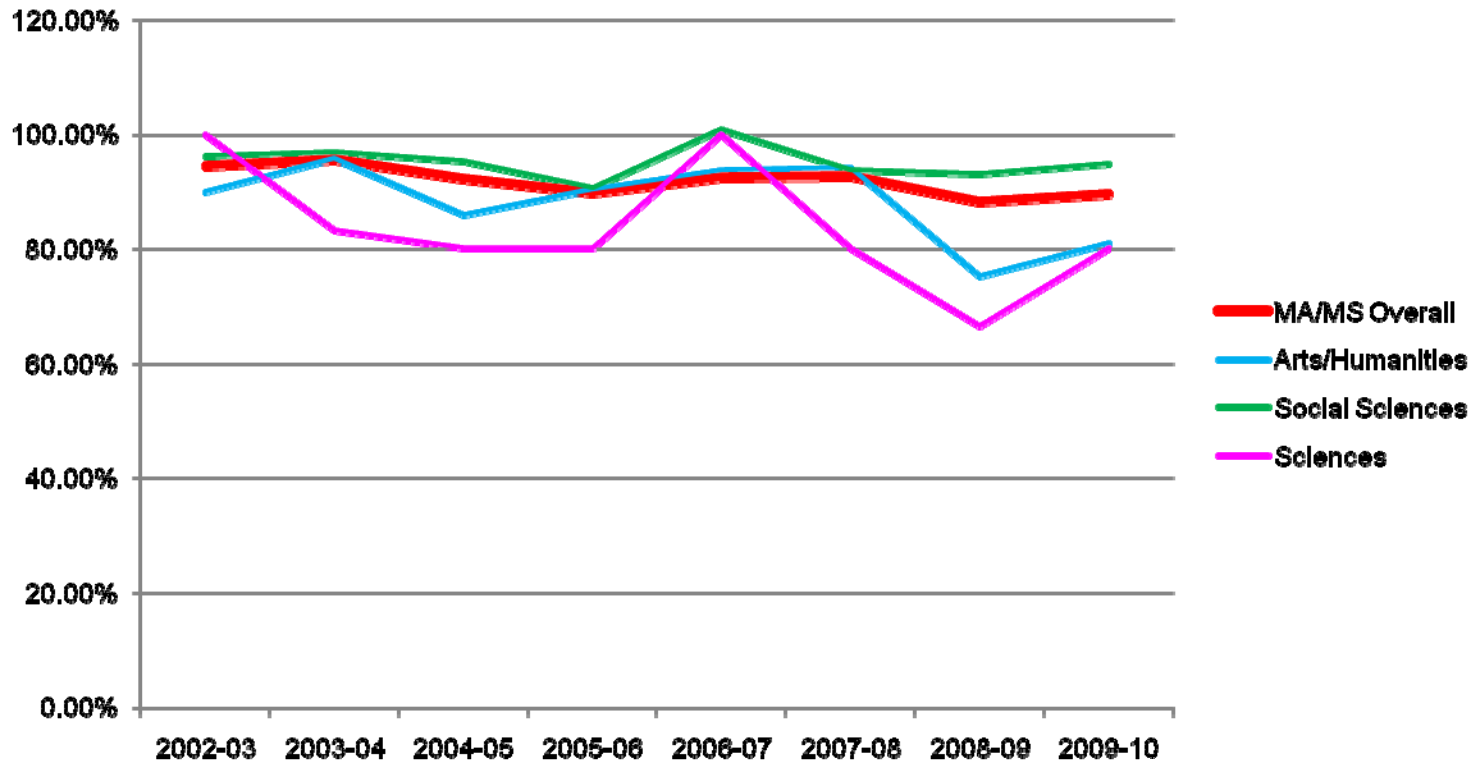


- Exit survey questions
- Did their career plans change?
- Would do they do it again?
- What about those who withdraw and did not complete a degree?

Fraction of graduate students whose career plans changed while in graduate school, Exit Surveys 2002-10

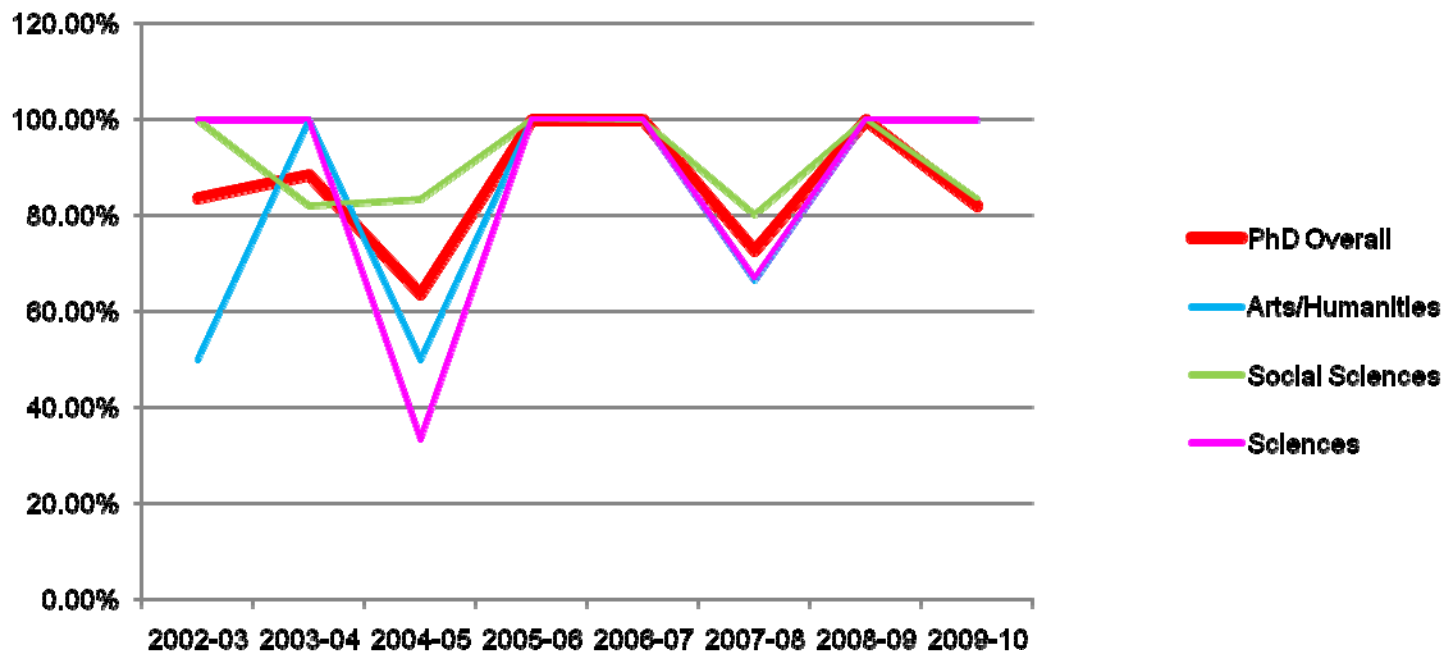


Of those whose career plans changed how many would still choose this graduate program? Masters:



Of those whose career plans changed how many would still choose this graduate program?

Doctorates:



? **What attrition rate in a doctoral program is to be expected?**

- (a) less than 10%
- (b) 10%-24%
- (c) 25%-34%
- (d) 35%-50%
- (e) above 50%

(Withdrawn or left with a masters within 6 years)



Graduate School of
Arts and Sciences

? Do you track your doctoral attrition rate? If so, what is it?

- (a) no tracking, don't know
- (b) 0 -25%
- (b) 26-35%
- (c) 35%-50%
- (d) over 51%

Role of graduate school in preparing for success in career path:

- Academic track
 - Graduate Institute For Teaching
 - Excellence in teaching to be signature of our doctoral candidates
- Research career in industry
 - Faculty and alumni, dual degree programs
- Career in public service
 - Alumni, dual degree programs

Dual degrees and career placement:

- Last year with Boston College Law School we developed a dual JD/MA in environmental law, policy and planning
- Allow students to complete both degrees in 4 years (instead of 5)
- Partnering with business school for management skills
- Masters degrees with teaching licensure



Graduate School of
Arts and Sciences

? Do you offer dual degrees at your institution or with a partner institution?

- (a) none
- (b) 1 - 5
- (c) 5 - 10
- (d) more than 10

Role of alumni in program evaluation: feedback

- Alumni: changing landscape of career opportunities
- Preparing Future Scholars Workshop
- Help network the graduate student community

Linked In:

The screenshot shows a Windows Internet Explorer browser window displaying a LinkedIn group page. The browser's address bar shows the URL: http://www.linkedin.com/groups/mostPopular=6qgd=18188558&tr=nyg_ugrp_ovr. The page title is "Tufts University Graduate Community (Arts, Sciences, and Engineering) | LinkedIn - Windows Internet Explorer".

The LinkedIn interface includes a navigation bar with links for Home, Profile, Contacts, Groups, Jobs, Inbox (20), and More. The user's name, Robert Boehnak, and "Add Connections" are visible. The group name is "Tufts University Graduate Community (Arts, Sciences, and...)".

The main content area features a discussion input field with the text "Start a discussion or share something with the group..." and a "Share" button. Below this is the "My Activity" section, followed by "Most Popular Discussions".

The "Most Popular Discussions" section includes several posts:

- A post by Mera Meron about a documentary drama on 9/11, with a link to "JAC Publishing & Promotions Description Page" (jacpub.com) posted 3 months ago. A comment from Manka S. Angwafu says "I got the same letter and noticed that it was rather vague on saying specifically what information was obtained." (Note: This comment is actually associated with the post below).
- A post by Irma Rastegayeva about letters to Tufts alumni warning of a security breach, posted 5 months ago. A comment from Manka S. Angwafu says "I got the same letter and noticed that it was rather vague on saying specifically what information was obtained."
- A post titled "Equity of Test Is Debated as Children Compete for Gifted Kindergarten" from nvtimes.com.

The right sidebar contains "Updates: Last 7 Days" with notifications such as "Pepall Lynne has joined the group." and "25 people have joined the group, including Jacqueline Gonzalez, Ming Chow and Armando Milou". Below this are "Ads by LinkedIn Members" including "Hire Magician Joe DiDonna" and "University of Phoenix".

The Windows taskbar at the bottom shows the Start button, several open applications (Microsoft Office, Tufts University, etc.), and the system tray with the time 12:41 PM.



Graduate School of
Arts and Sciences