



ProQuest.com

ProQuest

START
HERE.

PROQUEST UPDATES

2013 CGS Summer Workshop and New Deans Institute

San Juan, Puerto Rico

July 15, 2013

ProQuest Information Solutions-Dissertation Publishing

Agenda

- UMI ETD Administrator Reminder and Updates
 - Recent Enhancements & Changes
 - Upcoming Enhancements
 - User feedback
- Introduction to the Dissertation Dashboard Concept -
 - Scope of Dissertation Data
 - Examples of types of reports
- Questions

A Reminder



[About RefWorks](#) [Administrator](#) [Other Products](#) [Contact Us](#) [Help](#)

Login to Your RefWorks Account

New to RefWorks?

[Sign Up for a New Account](#)

Login using RefWorks Credentials

ProQuest Dissertation Publishing ([not my institution](#))

Login Name

Password

☐ Keep my session open for 14 days

Login

[Forgot Your Login Information?](#)

Login using Other Credentials

[Athens Credentials](#)

[My Institution's Credentials \(Shibboleth\)](#) ▼

| [UMI® Dissertations](#)

Free Lifetime Access to RefWorks for ETD Subscribers

Creating a new account?

Manage your research with ease! Create your RefWorks account today to get started with simplifying your research process to become more efficient and productive!

Want to get started?
Select "Sign Up For An Individual Account".

Is your institution already a subscriber?

Is your institution already a RefWorks subscriber? Already have an account set-up through an institutional license?

If either of these apply to you, we recommend that you continue to access RefWorks through your organization's log-in page.

Want to get training on RefWorks 2.0?
Sign up for one of our overview webinars here!

[RefWorks Terms and Conditions](#)

Major Changes in the UMI ETD Administrator in 2013



- ✓ What's New?
- ✓ IR Access and Embargo Options
- ✓ Administrative Documents
 - Deactivation of Third Party Vendor Option
 - SWORD deliveries direct to IRs
 - Dissemination Information Added
 - ProQuest Agreements Viewable at decision point

WHAT's NEW –Announcements



Home

Support & Training

Resources & Guidelines

Submitting Your Dissertation/Thesis

About ETD Administrator

Support & Training

Need help using ETD Administrator? Email Dissertations & Theses Support for assistance.

* required

Name*

Email*


Institution*

I'm a ☐ Student ☐ Administrator

I need help with*

Message*

Support Tools

- ▶ [Frequently Asked Questions](#)
- ▶ [Administrator's Guide](#) 
- ▶ [Creating PDFs](#)
- ▶ [Administrator's Tutorial Videos](#)
- ▶ [What's New](#)

Phone and Mailing Address

For technical assistance:

- ▶ 1.877.408.5027
- ▶ Available 8:00-19:00 E.S.T.
Monday through Friday
(excluding U.S. holidays)

**For questions about payment or
ordering copies:**

Institutional Repository Publishing Options



Submission steps:

Publishing information:

- ☐ Instructions
- ☐ PQ publishing options
- ☐ ProQuest/UMI agreement

☒ IR publishing options

☐ Contact information

About my dissertation/thesis:

- ☐ Dissertation/Thesis details
- ☐ PDF
- ☐ Supplemental files (optional)
- ☐ Administrative documents
- ☐ Notes (optional)

Submission & payment:

- ☐ Register U.S. Copyright
- ☐ Order copies

Institutional Repository (IR) Publishing Options

I want my work included in my school's IR *

- ☒ Yes
- ☐ No

I want my work immediately available in my school's IR *

- ☐ Yes
- ☒ No - I have patents pending, or another reason why I need to delay access to the full text of my work.

How long would you like to delay the release to your school's institutional repository (IR)? *

- ☐ 6 months
- ☐ 1 year
- ☐ 2 years

☐ Delay release until the following date:
YYYY-MM-DD (leave blank to never display)

Student Notes to Administrator:

Reason for delaying release to IR:*

Access options*

Select the option that best reflects your preference for publishing your work in your school's institutional repository.

- ☐ Open access
- ☐ Campus use only

Save & Continue



Document Examples

- Dissertation Approval Forms signatures
- Certificate of Completion (SED)
- Graduate Student Exit Surveys
- Satisfaction Surveys
- Hold releases
- Optional Documents

Submission steps:

Publishing information:

- ☐ Instructions
- ☐ PQ publishing options
- ☐ ProQuest/UMI agreement
- ☒ IR publishing options
- ☐ University agreement
- ☐ Contact information

About my dissertation/thesis:

- ☐ Dissertation/Thesis details
- ☐ PDF
- ☐ Supplemental files (optional)
- ☒ Administrative documents
- ☐ Notes (optional)

Submission & payment:

- ☐ Register U.S. Copyright

Administrative Documents

Upload documents as directed below.

Required fields are marked with an asterisk (*). If you have trouble uploading your file, try our [Basic Upload tool](#).

*1. Please upload your graduate survey.

The file (Graduate_Skills_StatementIRELAND.pdf) was successfully uploaded.

[Graduate_Skills_StatementIRELAND.pdf](#) (877.4 kB)

[Replace File](#) [Delete](#)

2. You may upload your advisor evaluation below.

Browse

Save & Continue

Forthcoming Changes in the UMI ETD Administrator in 2013



- Batch Download of Administrative Documents
- Student's Institutional ID number
- Creative Commons License Options
- Additional Optional Emails
- Improved Formatting Editors for Abstract & Note boxes

INTRODUCTION TO THE PROQUEST DISSERTATION DASHBOARD CONCEPT



What's Measured in a Dissertation Dashboard?

- **Usage** (represents the number of times some aspect of a dissertation record is accessed in the ProQuest Dissertations and Theses database (PQDT). Usage includes, for example, citations, viewings of abstracts, 24 page previews, pdfs and downloads)
- **Number of deposits made to ProQuest** (as measure of productivity)
- **Global Accesses** (usage data as defined above by geographical regions)



What questions could I answer about my institution's scholarly output with dissertation data?

- How often are my institution's dissertations accessed and viewed in the academic community? By my peers? By my internal communities? Globally?
- How does my institution's dissertation usage compare to that of my peers?
- What do the patterns of usage reveal about the possible value of my institution's scholarly output to the academic community?



What do the patterns of usage reveal about the value of my institution's scholarly output?



- Over time? (3yrs out, 5yrs, 7yrs?)
- Compared to my institution's peers?
- What might high usage rates signal to key audiences?



The Scope of the Dissertation Database

What kind of information is potentially available in the Dissertation Dashboard?

- Title
- Author
- Committee Members (recent years)
- Advisor (recent years)
- Institution
- Degree Date
- Subject categories
- Narrowly defined subject categories
- Document format
- Country of access
- Identity of PQDT customer (e.g., Cardiff University, UK)

Data Date Ranges

- 1605 Earliest title (Switzerland - ProQuest 1975)
- 1861 Earliest U.S. dissertation record (Yale)
- 1997 – present Digitizing full-text
- 2002 – present Collecting committee data
- 2002 – present Collecting advisor data

Scope of Data

ProQuest Dissertations and Theses (PQDT) database contains:

- 2,300,000+ Dissertation Author names
- 2,300,000+ Dissertation records
- 1,900,000+ Full-text dissertations and theses
- 325,000+ Committee member names
- 1,100,000+ Advisor names
- 2012 Institutions represented in PQDT

Data Not Available

- Institutional type
- Institutional Control
- Year the authors started writing the dissertation/thesis
- If dissertation work was funded, the funding source (e.g., NIH)
- Time to degree
- Post-graduation outcomes

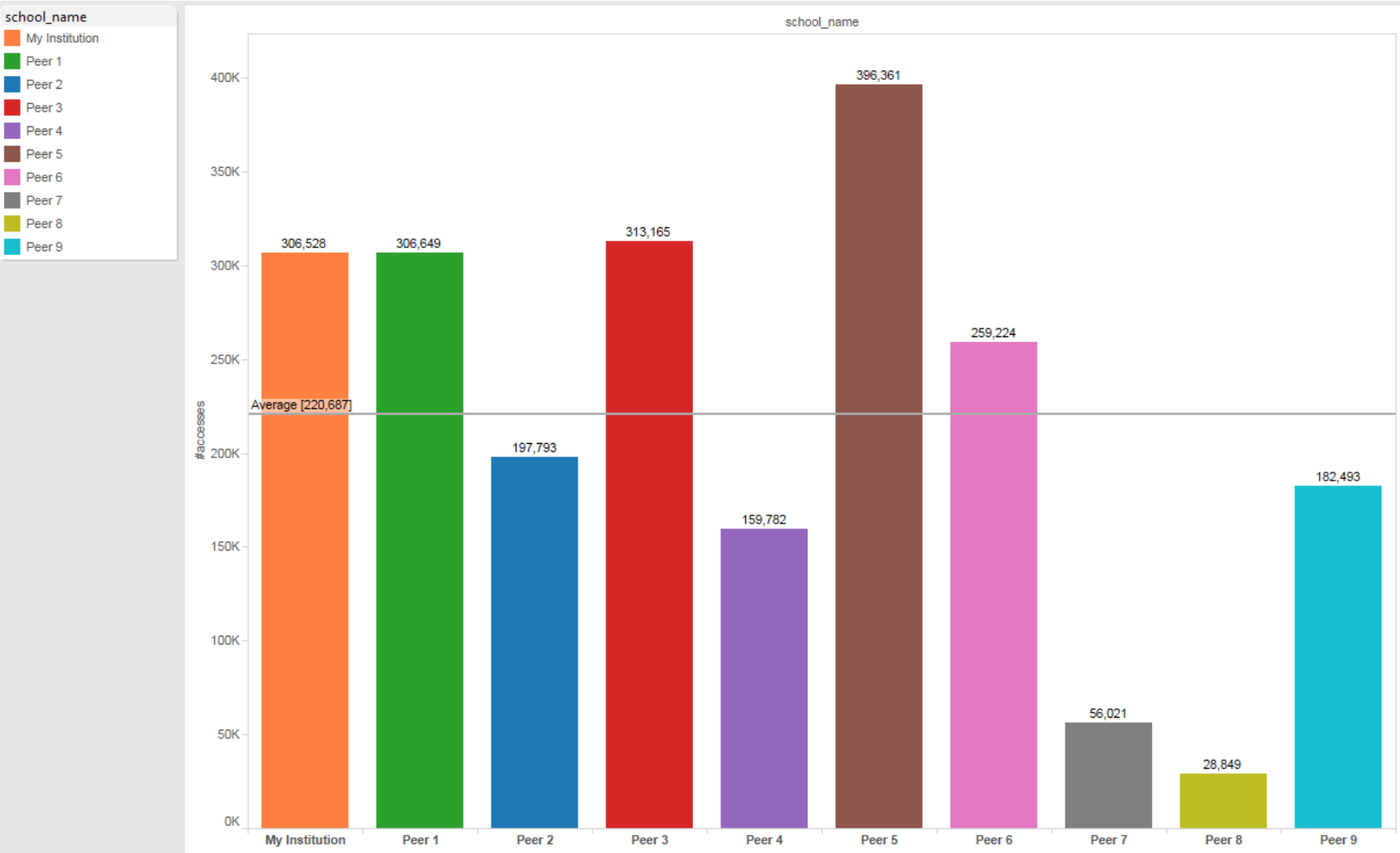
Reports 1-3 provide usage data

- The group average usage in Report 1 has been calculated based on the total number of viewings across the 10 Peer institutions represented in this presentation.
- The 10 institutions in Report 1 used in calculating the average are from 5 regions of the country (north, south, east, west, and mid-west).

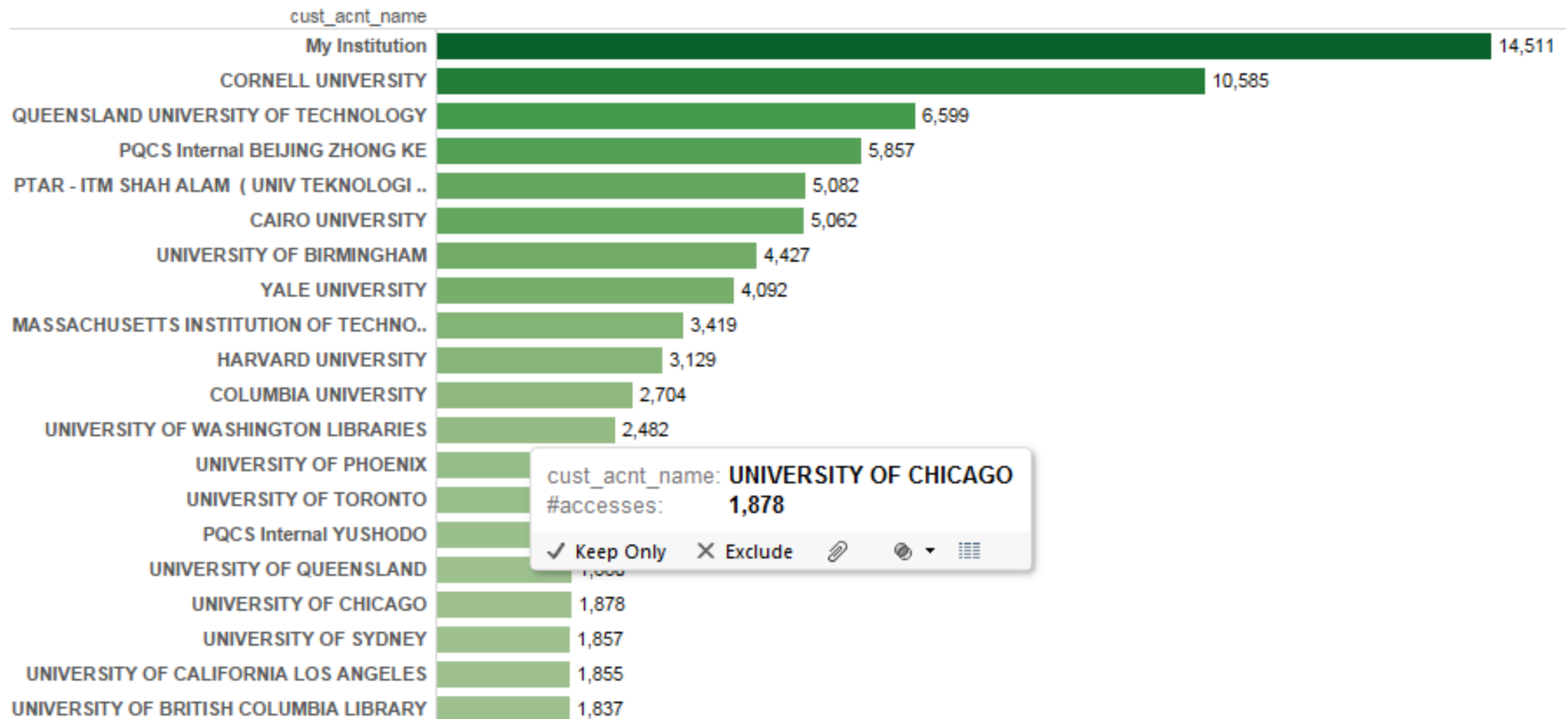
Reports 4-6 provide deposit/productivity data

Examples of Reports Generated by the Dissertation Dashboard

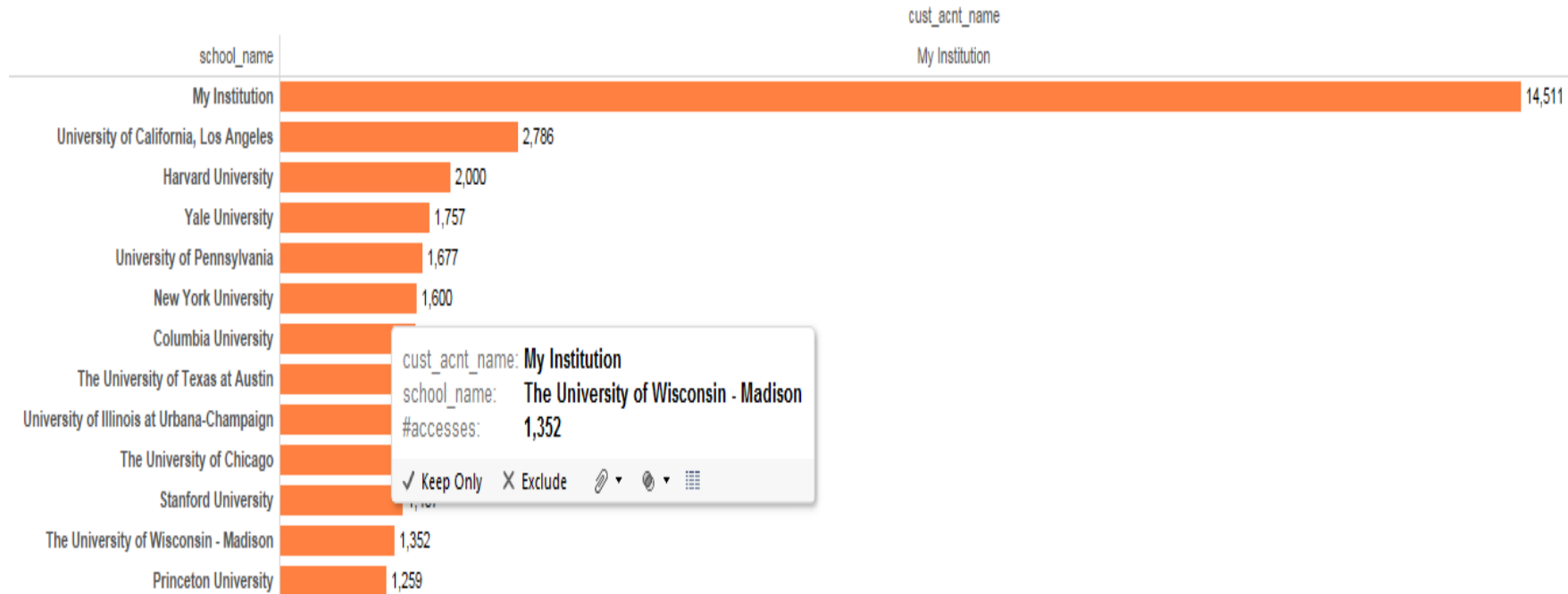
What was the overall usage number for my institution's dissertations in 2012? How does my institution's usage compare to that of our peers? How do we compare to the group average?



Which of the ProQuest customers are accessing the dissertations produced by my school?



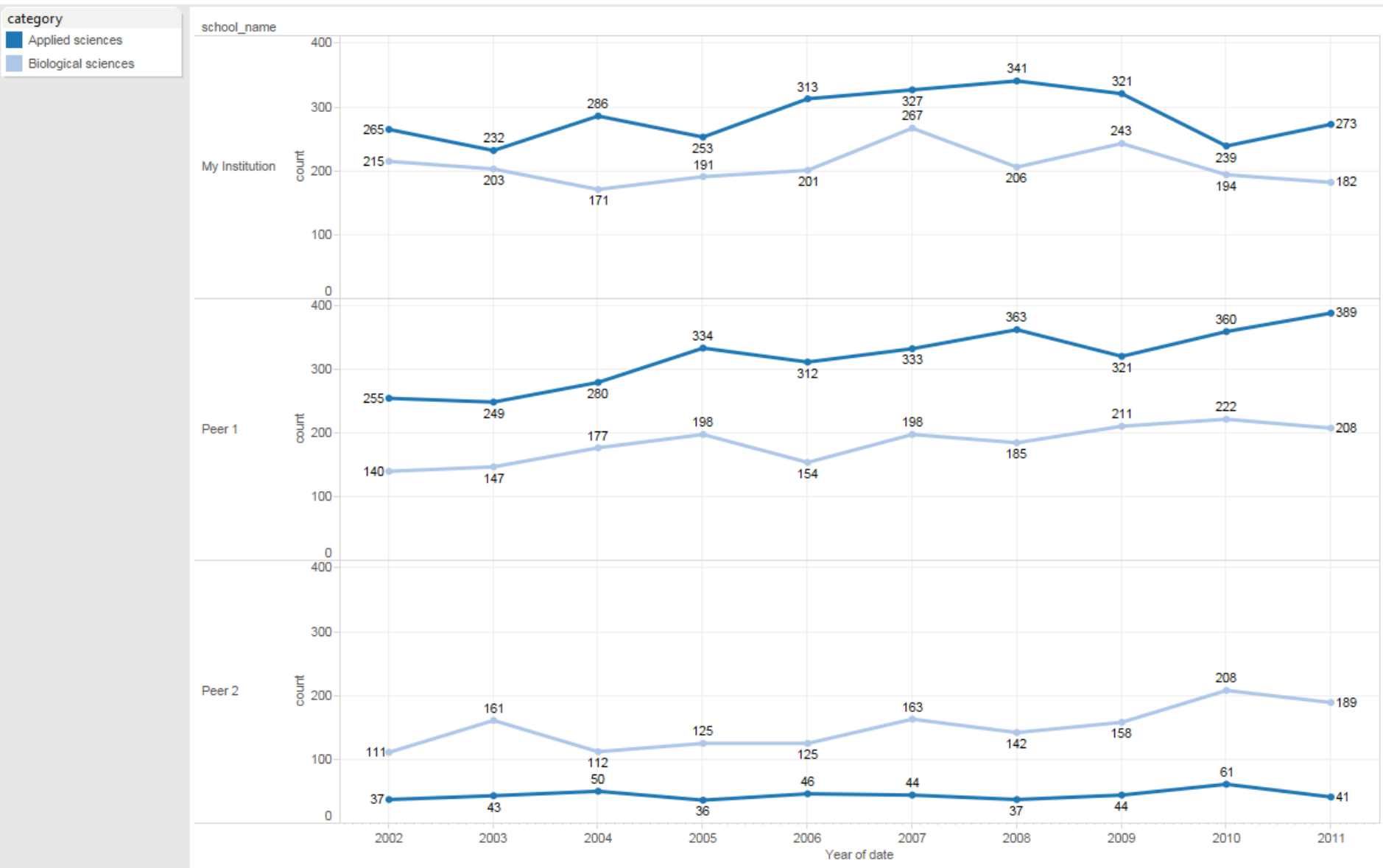
Which institutions' dissertations are my institutional communities viewing?



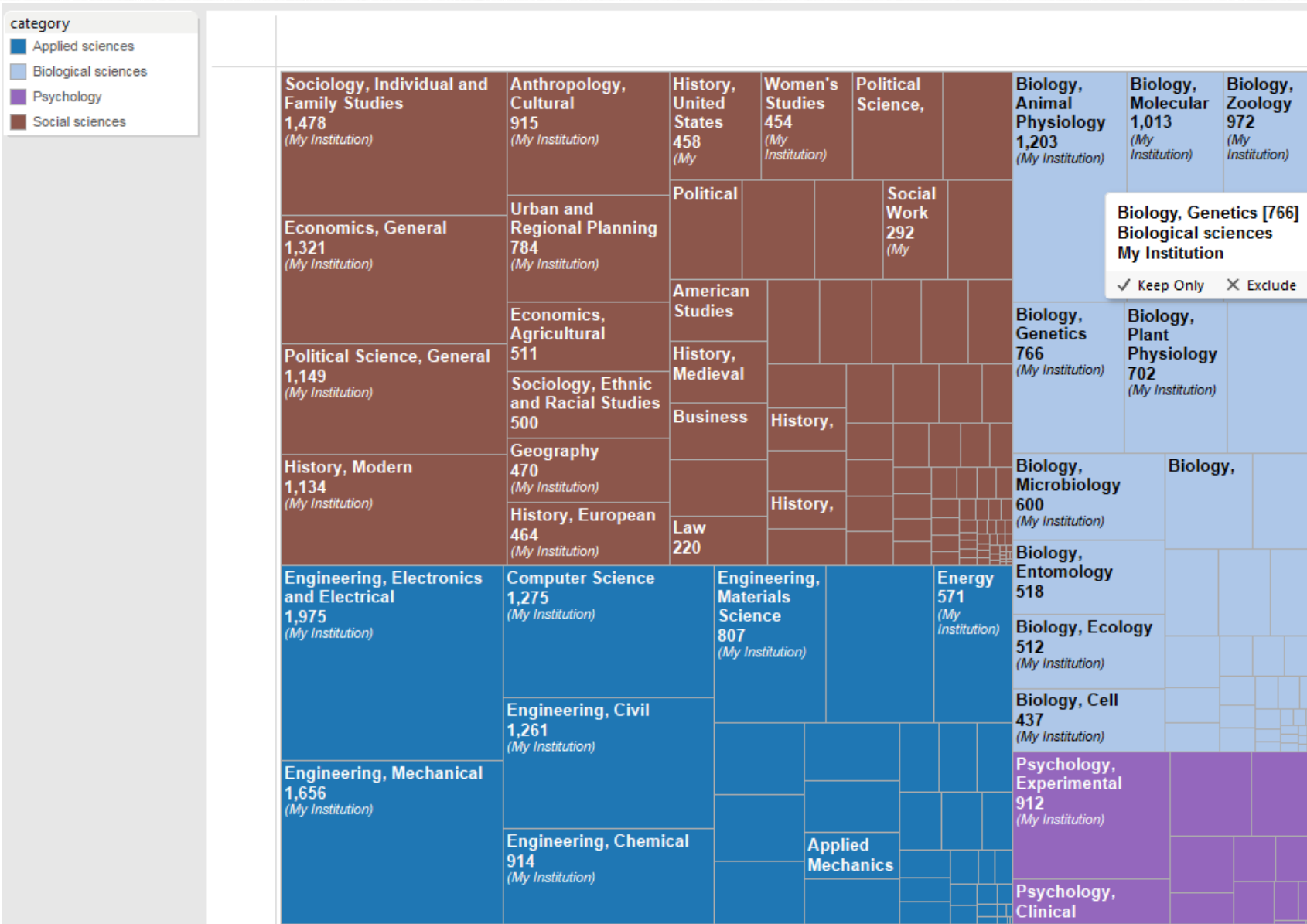
What is my institution's usage by geographic regions? How does my institution's usage compare to Peer 8's?



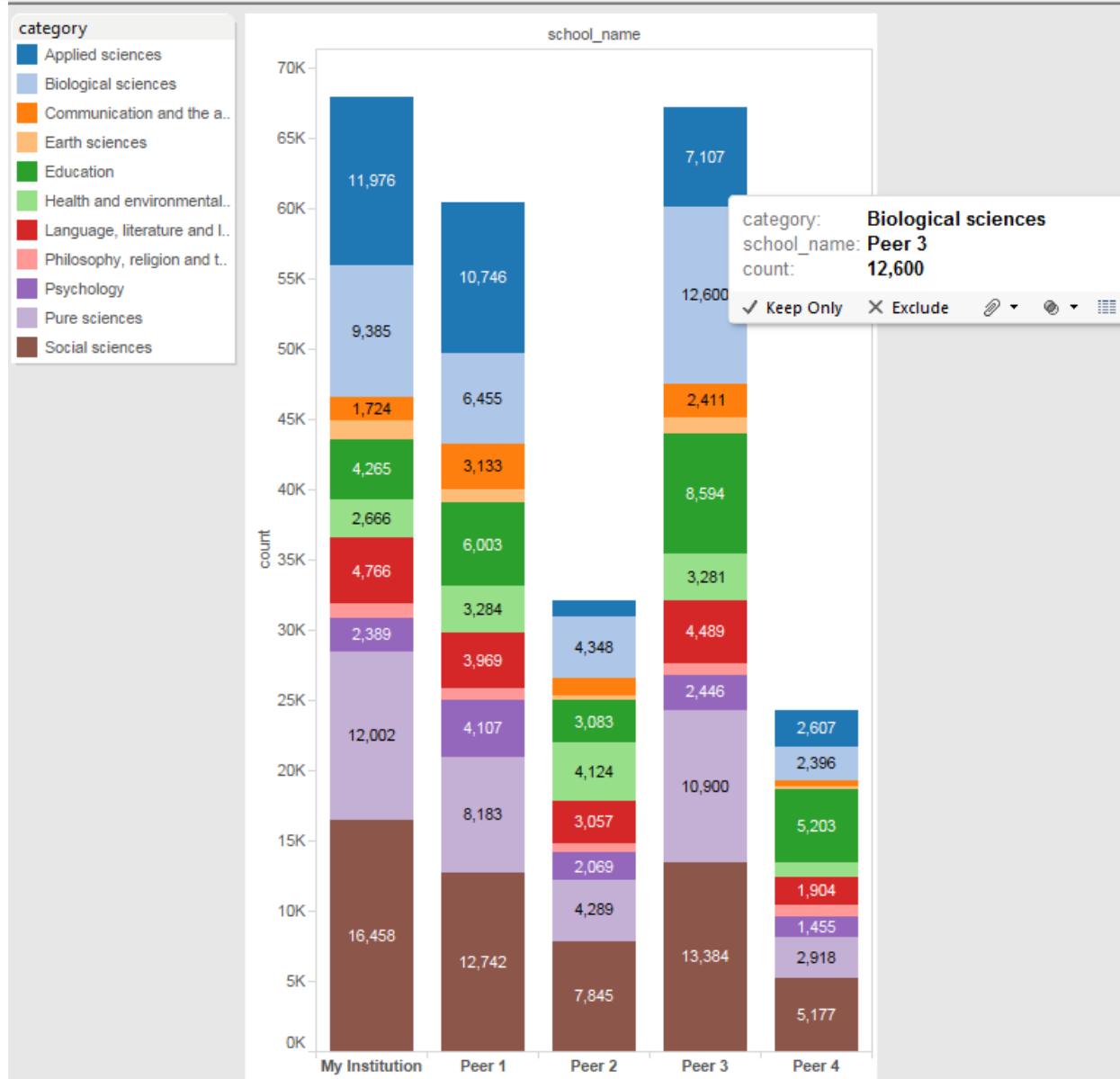
What do my institution's deposit/productivity patterns look like for particular subject categories from 2002 to 2011? How do we compare to Peer 1's and Peer 2's?



What is my institution's dissertation production by broad ProQuest subject categories and narrowly defined categories?



Dissertation deposits/production across all 11 ProQuest subject categories for my institution and that of 4 peers. (Figures represent deposit totals for each institution.)



Question: How can this type of data be utilized to support the work of the Graduate School, the Library, the Institutional Research Office, the Provost, and programs?

