



EASTERN
ILLINOIS
UNIVERSITY



EIU Snapshot

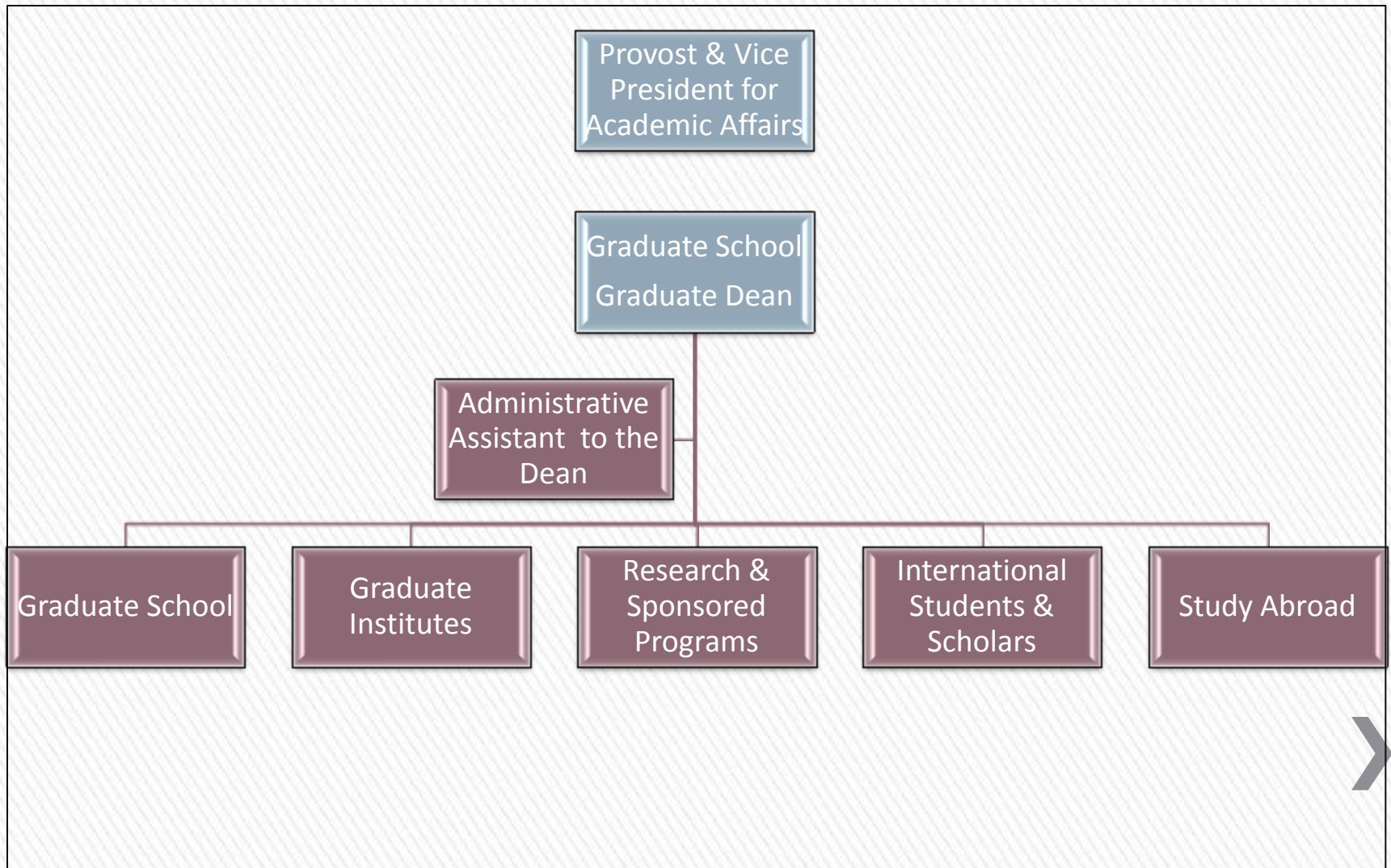
- > Public Master's Institution founded 1895
- > 12,000 students
- > 47 undergraduate degree programs
- > 1700 graduate students
- > 28 graduate degree & 8 certificate programs
- > 650 graduate degrees conferred annually
- > First graduate degrees conferred in 1952
- > 10 First Choice Graduate Programs

The Graduate School

EASTERN ILLINOIS UNIVERSITY™



Administrative Report Lines



The Graduate School

Graduate Education	Graduate Institutes	Research & Sponsored Programs	International Students & Scholars	Study Abroad
Recruitment Admission Funding	Integrative Graduate Studies Institute	Faculty Development	Recruitment Admission Funding	Recruitment Admission Funding
Curriculum Assessment	Literacy in Financial Education Center	Pre-award Promotion	Partnerships Joint/Dual Degrees	Faculty Development
Research Scholarship	Alumni/ Philanthropy Board	Post-award Support	International Promotion	Curriculum Development
Promotion Recognition		Compliance & EIU Grants	Support Services	Support Services
Certification Career Support		Philanthropy	Philanthropy & Alumni Programs	Philanthropy

Administration

Graduate School	Graduate Institutes	Research	International	Study Abroad
Dean	Director of the IGS Institute	Director	Director	Director
Assistant Dean	Director of the LIFE Center	Assistant Director	Admissions Officer	Coordinator
Administrative Assistant		Compliance Officer	Coordinator	Coordinator
Admissions Officer		Administrative Clerk	Staff Clerk	
Admissions Assistant			Office Assistant	
Certification Officer				
Staff Clerk				

Graduate Education Governance

Graduate Coordinators	Council on Graduate Studies	Graduate Alumni Advisory Board	Graduate Student Advisory Council
27 Coordinators	10 Members 8 Elected 1 Dean Appointed 1 Student Member Executive Board Governance Boards Liaison Committees	12 Members Members invited to serve by the Dean Required philanthropy component	54 Representatives 8 Executive Council Members



Graduate School Governance

Graduate Coordinators	IGS Institute Advisory Board	Council on Faculty Research	International Education Council	Study Abroad Society
Council on Graduate Studies & CGS Boards	LIFE Center Advisory Board	IRB: Institutional Review Board	Association of International Students	
Graduate Alumni Advisory Board		IACUC: Institutional Animal Care & Use		
Graduate Student Advisory Council				



Finance/Budgeting

» 65% Appropriations (Tuition & State)

- > Graduate Assistantships, Tuition Waivers, Graduate Research, Travel, Awards Grants, Faculty Grants, Scholarships, Initiative Funds, Staffing, Operations

» 15% Fees

- > GSAC, Scholarships, Staffing, Operations

» 15% Grants, Contracts, Indirect Costs

- > Staffing, Operations, Institutes, Graduate Assistantships

» 5% Philanthropy

- > Alumni Programs, Assistantships, Scholarships, Hamand Awards

Calibration Documents

» CGS 2004

- > *The graduate school should establish and articulate a **standard for intellectual excellence** that pervades all discussions and decisions...*

» CGS 2005

- > *The Master's Degree should be a prominent degree **aligned with the American workforce**.*

» EIU 2012

- > *Create a culture of rigor by linking rigor to program identity through the adoption of distinctive **hallmarks of excellence**.*

» CGS 2013

- > *Create "Best Practices" to **enhance the financial education** for graduate and undergraduate students*



Standards/Hallmarks: Rigor

- » First Choice Programs & Board
 - > Funding Tied to First Choice Designation
 - > Access to Additional Resources & Initiative Funds
- » Graduate Candidate Research, Travel, Excellence Awards
 - > Funding for Graduate Research and Exemplary Achievements
- » Graduate Faculty Mentoring Awards
 - > Funding for Excellence in Graduate Faculty Mentoring
- » Graduate Coordinator and University Leadership Awards
 - > Funding for Exemplary Leadership in Graduate Education
- » Assessment Programs, Awards & Reviews
 - > Funding for Exemplary Achievements in Assessment

Standards/Hallmarks: American Workforce

- » Interdisciplinary Programs & Board
 - > Support for Interdisciplinary Program Development
- » Professional Science Master's (PSM) Board
 - > Support & Guidance for PSM Development
- » On-line Programs & Board
 - > Guidance for On-Line Program Development
- » Non-Degree Programs & Board
 - > Promotion of Professional Development/Credential Maintenance

The Graduate School

EASTERN ILLINOIS UNIVERSITY™



Standards/Hallmarks: Selectivity & Finance

- » Integrative Institute
- » Literacy in Financial Education Center
- » Program Recruitment & Finance Plans
- » Graduate School & Program Marketing Plans
- » Assistantships & Scholarships
 - > Graduate School
 - > EIU
 - > External Partners
 - > Philanthropy

The Graduate School

EASTERN ILLINOIS UNIVERSITY™



Standards/Hallmarks: Research

- » Graduate School Research Grants
- » Williams Travel Grants
- » Thesis & Research Awards
- » Hamand Society
- » Presidential & Provost Assistantships
- » Research Showcase
- » Summer Research Program

The Graduate School



EASTERN ILLINOIS UNIVERSITY™

Standards/Hallmarks: Partnerships/Philanthropy

- » EIU Partnerships
 - > Colleges, Schools, Departments, Key Campus Units
- » External Partnerships
 - > Funded Internships, Funded Assistantships, Funded Scholarships, Participation on Boards
- » Alumni Partnerships
 - > Alumni Board, Awards, Recognition, Philanthropy Programs

A Little Wisdom from Jack Welch

»*put the best, hungriest, and most passionate people in leadership roles.....*

The Graduate School



EASTERN ILLINOIS UNIVERSITY™

Supporting documents available at:

» www.eiu.edu/graduate/cgspresentation.php

The Graduate School



EASTERN ILLINOIS UNIVERSITY™