



Governance & Organization

- > Robert M. Augustine, Dean
- > 2014 New Deans Institute & Summer Workshop

The Graduate School



EASTERN ILLINOIS UNIVERSITY™

EIU Snapshot

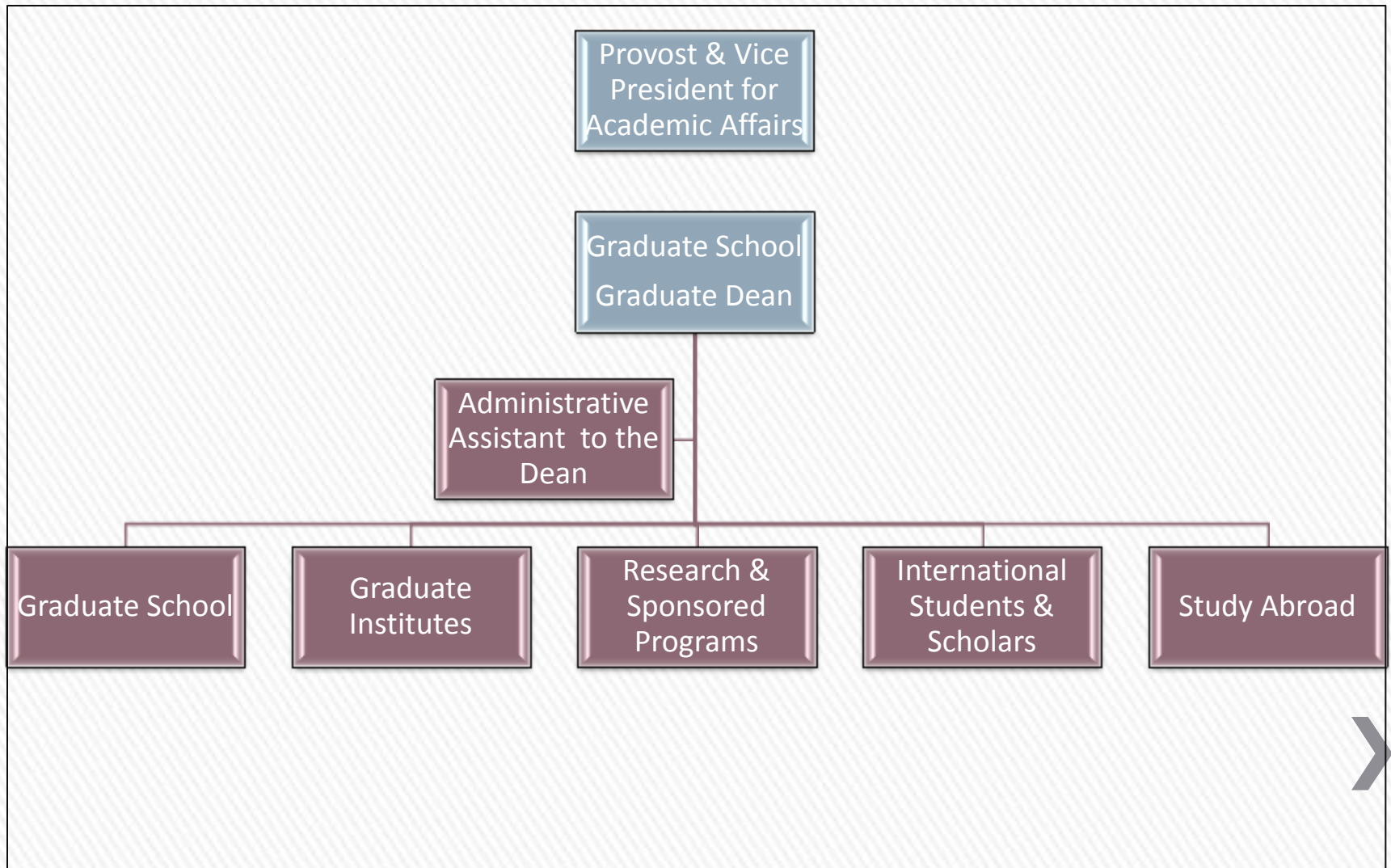
- > Public Master's Institution founded 1895
- > 11,000 students
- > 69 undergraduate degree programs
- > 1600 graduate students
- > 30 graduate degree & 11 certificate programs
- > 650 graduate degrees conferred annually
- > First graduate degrees conferred in 1952
- > 11 First Choice Graduate Programs

The Graduate School



EASTERN ILLINOIS UNIVERSITY™

Administrative Report Lines



The Graduate School

Graduate Education	Graduate Institutes	Research & Sponsored Programs	International Students & Scholars	Study Abroad
Recruitment Admission Funding	Integrative Graduate Studies Institute	Faculty Development	Recruitment Admission Funding	Recruitment Admission Funding
Curriculum Assessment	Literacy in Financial Education Center	Pre-award Promotion	Partnerships Joint/Dual Degrees	Faculty Development
Research Scholarship	Alumni/ Philanthropy Board	Post-award Support	International Promotion	Curriculum Development
Promotion Recognition		Compliance & EIU Grants	Support Services	Support Services
Certification Career Support		Philanthropy	Philanthropy & Alumni Programs	Philanthropy

Administration

Graduate School	Graduate Institutes	Research	International	Study Abroad
Dean	Director of the IGS Institute	Director	Director	Director
Assistant Dean	Director of the LIFE Center	Assistant Director	Admissions Officer	Coordinator
Administrative Assistant	Director of Philanthropy	Compliance Officer	Coordinator	Coordinator
Admissions Officer		Administrative Clerk	Staff Clerk	
Admissions Assistant			Office Assistant	
Certification Officer				
Staff Clerk				

Graduate Education Governance

<p>Graduate Coordinators</p> <p>27 Coordinators</p>	<p>Council on Graduate Studies</p> <p>10 Members</p> <p>8 Elected 1 Dean Appointed 1 Student Member</p> <p>Executive Board Governance Boards Awards Committees Liaison Committees</p>	<p>Graduate Alumni Advisory Board</p> <p>12 Members</p> <p>Members invited to serve by the Dean</p> <p>Required philanthropy component</p>	<p>Graduate Student Advisory Council</p> <p>54 Representatives</p> <p>8 Executive Council Members</p>
---	---	--	--

Graduate School Governance

Graduate Coordinators	IGS Institute Advisory Board	Council on Faculty Research	International Education Council	Study Abroad Society
Council on Graduate Studies & CGS Boards	LIFE Center Advisory Board	IRB: Institutional Review Board	Association of International Students	
Graduate Alumni Advisory Board		IACUC: Institutional Animal Care & Use		
Graduate Student Advisory Council				



Finance:

State Funding & Tuition

» 65% Tuition & State Funding

- > Staffing & Operations
- > Graduate Assistantship Stipends
- > Assistantship, Program, & International Tuition Waivers
- > Graduate Candidate Grants: Research & Travel
- > Faculty Grants: Research, Initiatives
- > Graduate Achievement Awards: Thesis, Capstone, Discipline
- > Faculty Achievement: Research & Mentoring

Finance: Fees

» 15% Fees

- > Graduate Student Advisory Council
 - + Student Government advocacy + Student Dean
 - + Travel to regional & national meetings
 - + Distinguished graduate students awards program
 - + Scholarships
- > Association of International Students Fee
 - + Cultural programming
- > International Services Fee
 - + Arrival assistance and support services
- > Study Abroad Fee
 - + Staffing

Finance: Grants & Contracts

- » 15% Grants, Contracts, Indirect Costs
 - > Compliance Staffing & Operations
 - > Graduate School Institutes
 - > 70 Research funded assistantships
 - > 30 Externally funded partnership assistantships

Finance: Philanthropy

» 5% Philanthropy

- > Alumni Advisory Board
 - + Annual Alumni Program
 - + Annual Fund Raising Event at Lincoln Museum
- > Funding
 - + Sponsored Assistantships
 - + Exemplary Thesis Awards
 - + Exemplary Capstone/Research Awards
 - + Named Scholarships
 - + Hamand/Discipline Awards

Calibration Documents

» CGS 2004

- > *The graduate school should establish and articulate a **standard for intellectual excellence** that pervades all discussions and decisions...*

» CGS 2005

- > *The Master's Degree should be a prominent degree **aligned with the American workforce.***

» EIU 2012

- > *Create a culture of rigor by linking rigor to program identity through the adoption of distinctive **hallmarks of excellence.***

» CGS 2013

- > *Create "Best Practices" to **enhance the financial education** for graduate and undergraduate students*



Hallmarks: Rigor

- » First Choice Programs & Board
 - > Funding Tied to First Choice Designation
 - > Access to Additional Resources & Initiative Funds
- » Graduate Candidate Research, Travel, Excellence Awards
 - > Funding for Graduate Research and Exemplary Achievements
- » Graduate Assistant Teaching Award
 - » Funding for exemplary teaching
- » Graduate Faculty Mentoring Awards
 - > Funding for Excellence in Graduate Faculty Mentoring
- » Graduate Coordinator and University Leadership Awards
 - > Funding for Exemplary Leadership in Graduate Education
- » Assessment Programs, Awards & Reviews
 - > Funding for Exemplary Achievements in Assessment

firstchoice
GRADUATEPROGRAM
EASTERN ILLINOIS UNIVERSITY

The Graduate School



EASTERN ILLINOIS UNIVERSITY™

Graduate Scholar

April 2014

Journal of Scholarship and Recognition



Michael Neureiter, 2014 Distinguished Master's Thesis Award Winner

The Graduate School
EASTERN ILLINOIS UNIVERSITY



Hamand Society of Graduate Scholars

Named in honor of the first dean of The Graduate School, Dr. Lavern Hamand, the Hamand Society recognizes degree-seeking graduate candidates nominated from among the class of Distinguished Graduate Students whose achievements in both scholarship and service have had a documented impact on the discipline and the community. The quality and impact of the scholarship and service achievements of Hamand Society Scholars reflect the highest ideals of the engaged graduate student.

Dean Hamand was a professor of history and served as dean from 1967 to 1974. Before her passing in 2011, his widow Martha provided support for the Society, which was created in 2010. Daughters, Carol Stephens and Wendy Venet, continue their parent's legacy in supporting graduate education at EIU.



2014 Hamand Scholar

Vaskar Nepal KC, Masters Candidate in Biological Sciences

Exemplifying student scholarship, research, and service, Vaskar was selected as an EIU Distinguished International Student, and twice received the Outstanding Student in Environmental Science. He has received eight grants and awards, which have included internal and external competitions for research, scholarship, presentations, and travel. He presented his research at three professional meetings and won the Lewis L. Osborne award for outstanding student presentation. Vaskar possesses a breadth of knowledge including plant- and animal-based disciplines, and has one manuscript submitted and more in preparation. A member of professional and honor societies, he has mastered the field skills in fisheries and has held both teaching and research assistantships in the Department of Biological Sciences. Vaskar regularly provides mentoring to other students and has assisted in six other student research projects apart from his own interest in fisheries. He volunteers with district biologists in fisheries sampling, and provides service to the department in managing the web sites for the Biological Sciences Graduate Student Association and other research sites. Working to restore the student chapter of the American Fisheries Society, he coordinated seminars in fisheries.

2014 Hamand Scholar

Alyssa Swan, Masters Candidate in Clinical Counseling

Alyssa epitomizes the engaged student, serving her community and the campus through service, teaching, scholarship, and volunteerism. Alyssa has published one research article as first-author and two others as co-author, and has four others under consideration. She presented her research 14 times in the past year and half, has been awarded multiple grants, and is a member of three graduate research teams. Alyssa assists with teaching Basic Skills of Counseling, Practicum, and Individual and Group Intervention courses for College Student Affairs, School and Clinical Counseling students. She regularly volunteers with at-risk populations providing free counseling services to a variety of groups including those with serious mental illness at St. Mary's Hospital in Decatur, physically and sexually abused children at Cunningham Children's Home in Urbana, and culturally diverse students at the U of I Counseling Center where she is a member of two treatment teams. She serves on three departmental committees, volunteers at the state level for the Illinois Counseling Association and the national level for the National Eating Disorders Association, provides student mentoring for GN4U and Epsilon Iota Upsilon, and volunteers locally for Soup Stop in Charleston and the Moultrie County Counseling Center.



Hallmarks: US Workforce Interdisciplinary Board

- » Governance support for current interdisciplinary programs
- » Governance support for emerging/potential interdisciplinary programs
- » Policy/promotion of dual-degree opportunities

The Graduate School



EASTERN ILLINOIS UNIVERSITY™

Hallmarks: US Workforce PSM Board

- » Professional Science Master's (PSM) Board
- » Governance support for current PSM programs
- » Staff support to promote PSM designation
- » Marketing and promotion tools



The Graduate School



EASTERN ILLINOIS UNIVERSITY™

Hallmarks: US Workforce Online Development Board

- » Governance support for current online programs
- » Governance support for potential online programs
- » Guidance on requirements
- » Development for faculty to teach online
- » Guidance on marketing/promotion
- » Hallmarks of existing programs

The Graduate School



EASTERN ILLINOIS UNIVERSITY™

Hallmarks:

Inclusiveness & Diversity



- » Integrative Graduate Studies Institute
 - » Multiple programs to promote a diverse applicant pool
 - » Multiple programs to degree completion
- » GN4U: Graduate Networking for Undergraduates
- » Advisory Board
- » Recruitment & Marketing Models
- » Career and PHD Support





integrative graduate studies institute
EASTERN ILLINOIS UNIVERSITY



the graduate network for undergraduates



Hallmarks: Financial Literacy



- » LIFE: Literacy in Financial Education Center
- » Centrally located facility
- » Director + support services
- » Advisory Board
 - » EIU Membership
 - » External Membership
- » Undergraduate to graduate programming

The Graduate School

EASTERN ILLINOIS UNIVERSITY™



Hallmarks: Research

- » Graduate School Research Grants
- » Williams Travel Grants
- » Thesis & Research Awards
- » Hamand Society
- » Presidential & Provost Assistantships
- » Research Showcase
- » Summer Research Program

The Graduate School



EASTERN ILLINOIS UNIVERSITY™

Standards/Hallmarks: Partnerships/Philanthropy

- » EIU Partnerships
 - > Colleges, Schools, Departments, Key Campus Units
- » External Partnerships
 - > Funding for Internships, Assistantships, Scholarships, Participation on Boards
- » Alumni Partnerships
 - » Alumni Board, Awards, Recognition, Philanthropy Programs
- » Signature Events

Graduate Alumnus

April 2014

Outstanding Graduate Alumni Awards Class of 2014



Chris Carron, '86, Class of 2011 Outstanding Graduate Alumni
Member, EIU Graduate Alumni Advisory Board

The Graduate School



EASTERN ILLINOIS UNIVERSITY



Hallmarks: US Workforce Future Planning: Non- degree Programing

- » Non-Degree Programs Board
- » Review of non-degree opportunities
- » Coordination of non-degree services
- » Guidance to promote degree options
- » Online opportunities for credentialing/maintenance

The Graduate School



EASTERN ILLINOIS UNIVERSITY™

A Little Wisdom from Jack Welch

» *...put the best, hungriest, and most passionate people in leadership roles.....*

The Graduate School



EASTERN ILLINOIS UNIVERSITY™

www.eiu.edu/graduate

The Graduate School



EASTERN ILLINOIS UNIVERSITY™