

# *GRE<sup>®</sup> Program Update*

**David G. Payne, PhD**  
**Vice President and COO**  
**College and Graduate Programs**  
**Educational Testing Service**



*The GRE<sup>®</sup> General Test*

# What we will cover today

- Overview
- ETS<sup>®</sup> Personal Potential Index (ETS<sup>®</sup> PPI)
- ETS My Credentials Vault<sup>SM</sup>
- GRE<sup>®</sup> Test Volumes
- Update on the GRE<sup>®</sup> Revised General Test
- ETS Awards for Best Practices in Graduate Admissions

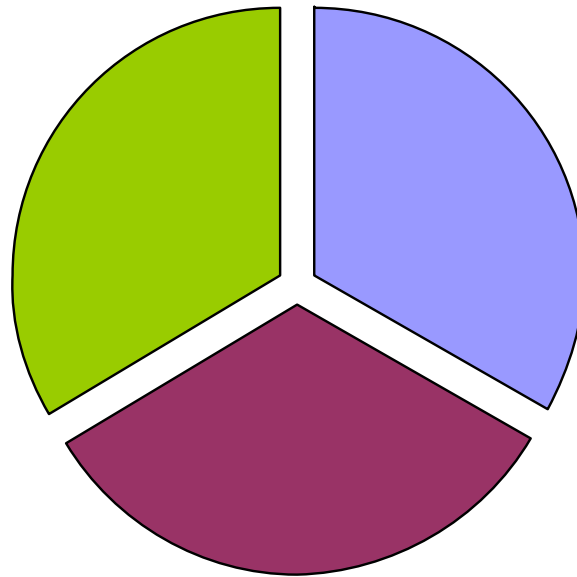


# Overview

ETS continues to add value to the entire admissions process by expanding its products and services to better meet the needs of the graduate community.

## GRE General Test and Subject Tests

Standardized Assessments



## ETS PPI

Web-based system for evaluating applicants' personal attributes on a quantitative and qualitative basis

Launched July 2009

## ETS My Credentials Vault

Web-based tool that simplifies the Letter of Recommendation process

Launched June 2009



GRE

Copyright © 2009 by Educational Testing Service. All rights reserved. ETS, the ETS logo, LISTENING. LEARNING. LEADING. and GRE are registered trademarks of Educational Testing Service (ETS).

The GRE® General Test



# What is the ETS® Personal Potential Index?

- The launch of ETS PPI marks the first large-scale use of noncognitive measures for admissions in higher education.
  - The introduction of the ETS PPI for the graduate school community was approved by a unanimous vote of the GRE Board.
- ETS PPI is a web-based evaluation system that provides evaluator ratings on specific personal attributes that graduate deans and faculty have identified as essential for success in graduate or professional school.
- Provides a more complete picture of your graduate applicants



# Provides information on six dimensions identified as critical for academic success



Listening. Learning. Leading.®

## ETS® Personal Potential Index

Applicant:

**Patricia S. King**

123 Main Street,  
East Lansing, MI 12345  
patsking@enet.com

Last 4 Digits of SS#: 1234  
DOB : 11/19/1988  
Gender: Female  
Waived rights under FERPA: YES

Undergraduate Institution: Carlisle State  
University  
Ann Arbor, MI 12435

Report Date: 01/05/2010

RECIPIENT:

Institution Name: Michigan State  
University  
Department Name: English  
Institution Code: 2293574  
Department Code: 34



\* Refer to Interpretive Guide on the back for explanation.



GRE

Copyright © 2009 by Educational Testing Service. All rights reserved. ETS, the ETS logo, LISTENING. LEARNING. LEADING. and GRE are registered trademarks of Educational Testing Service (ETS).

The GRE® General Test





# How does ETS® PPI work?

## 1. Applicant selects evaluators

- Up to five per report

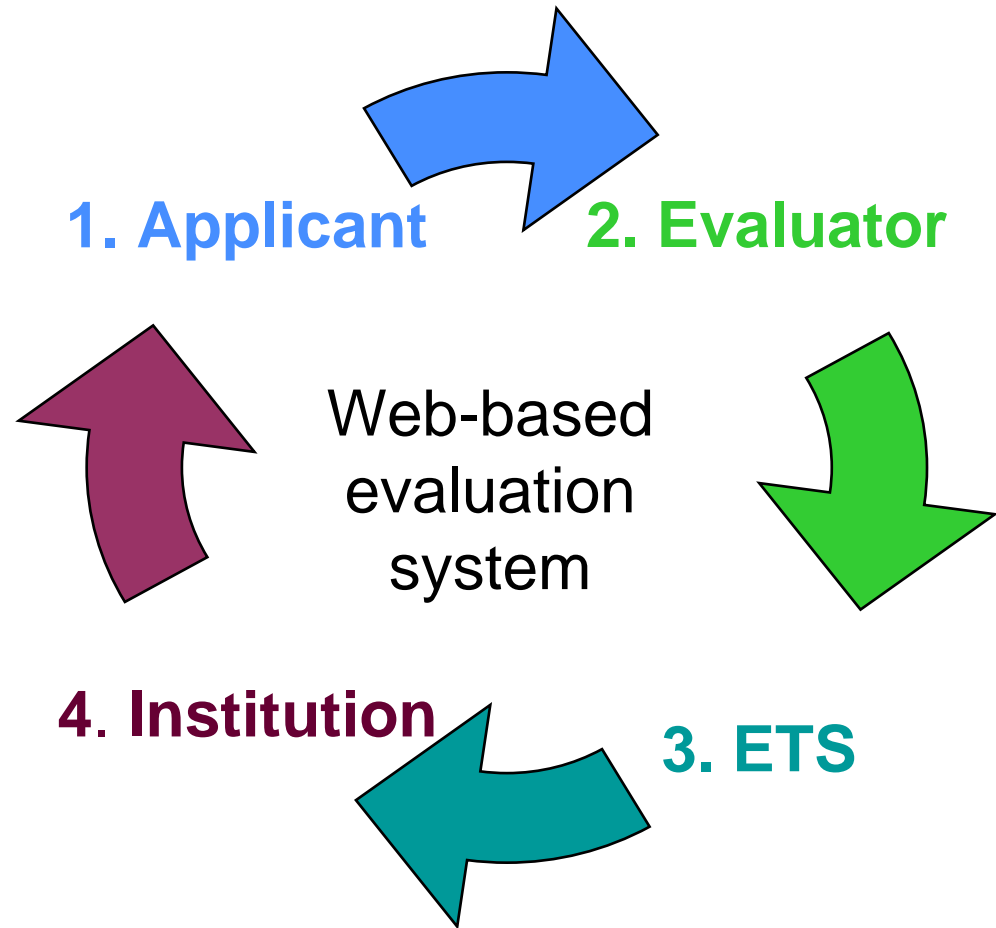
## 2. Evaluators rate applicant

- 24 statements, plus overall rating
- Likert scale
- Evaluators can add optional text

## 3. ETS creates evaluation report

- Evaluators' individual and mean ratings for each dimension and for the overall evaluation
- Evaluator comments
- Evaluator contact information

## 4. Report sent to institutions designated by applicant



# What is the research basis for ETS® PPI?

- **Multiple sources:**
  - Input from GRE Board noncognitive symposium (June 2001)
  - Research by ETS scientists and others in the field
    - Personality theory
    - Measurement of personal and “noncognitive” attributes
  - Feedback from hundreds of graduate and professional school deans and faculty members
  - Analysis and refinement of the instrument
- **Three-year pilot with:**
  - Project 1000 at Arizona State University
- **Commitment to:**
  - Ongoing validity studies exploring the relationship between these attributes and success in graduate and professional school



**GRE**

Copyright © 2009 by Educational Testing Service. All rights reserved. ETS, the ETS logo, LISTENING. LEARNING. LEADING. and GRE are registered trademarks of Educational Testing Service (ETS).

*The GRE® General Test*



# How does ETS® PPI contribute to the admissions process?

- **Helps graduate and professional programs**
  - Identify applicants who are more likely to succeed
  - Create more diverse and successful programs
- **Gives applicants**
  - The opportunity to provide evidence of a broader range of capabilities
  - An easy way to request and track evaluations
- **Enables evaluators**
  - To consistently evaluate students' attributes that are not reflected in current application information



**GRE**

Copyright © 2009 by Educational Testing Service. All rights reserved. ETS, the ETS logo, LISTENING. LEARNING. LEADING. and GRE are registered trademarks of Educational Testing Service (ETS).

*The GRE® General Test*





# How much interest is anticipated?

## Market research findings:

### **Widespread use within three years**

#### Phone interviews with 225 Directors of Graduate Programs

- Roughly half surveyed see ETS PPI as very or extremely useful
- Other findings about ETS PPI:
  - Is potentially valuable for ALL applicants
  - Provides more complete or better organized information
  - Adds value to the selection process in a variety of ways
  - Widespread agreement that ETS PPI Evaluation Reports are easy to interpret
  - Is likely to be recommended or required by most departments within the next three years



# Available to GRE® General Test registrants at no additional charge

## ETS PPI is available:

- To everyone who registers for the GRE General Test
  - Registrants can send up to four ETS PPI Evaluation Reports at no additional charge.
- As a stand-alone service to other applicants
  - \$20 per ETS PPI Evaluation Report



# What is ETS My Credentials Vault<sup>SM</sup>?

The ETS *My Credentials Vault* service — powered by Interfolio — is a centralized, web-based service that streamlines the entire letter of recommendation process for both applicants and letter writers.

- Collect, store and distribute letters of recommendation
- Manage recommendations from initial request through the critical delivery to designated graduate and professional schools.





# Who uses ETS My Credentials Vault<sup>SM</sup>?

Student/Subscriber

Request for Letter of Recommendation

Other Documents

My Credentials Vault

Letter of Recommendation Request

Letter of Recommendation



Letter Writers

- Application
- Test Scores
- Transcripts

Letter of Recommendation & Other Documents

Institutions



# ETS My Credentials Vault<sup>SM</sup> subscription

The ETS *My Credentials Vault* service is convenient and affordable.

- Applicants can enjoy a one-year subscription for a low annual fee of \$19.
- Additional discounts apply for 3- or 5-year subscriptions.
- Modest transaction fees apply.
- There is no charge to letter writers for using the service.



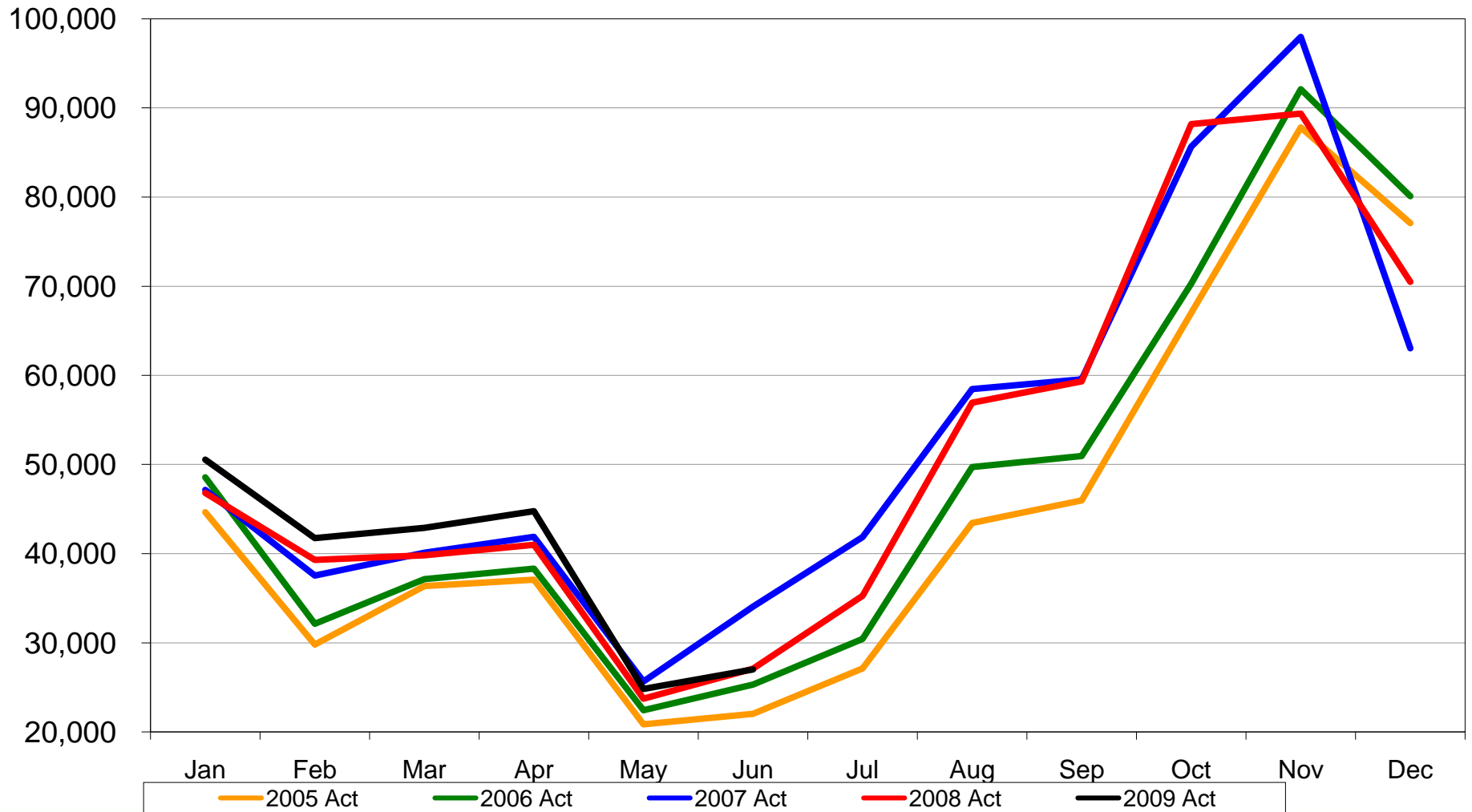
**GRE**

Copyright © 2009 by Educational Testing Service. All rights reserved. ETS, the ETS logo, LISTENING. LEARNING. LEADING. and GRE are registered trademarks of Educational Testing Service (ETS).

*The GRE<sup>®</sup> General Test*

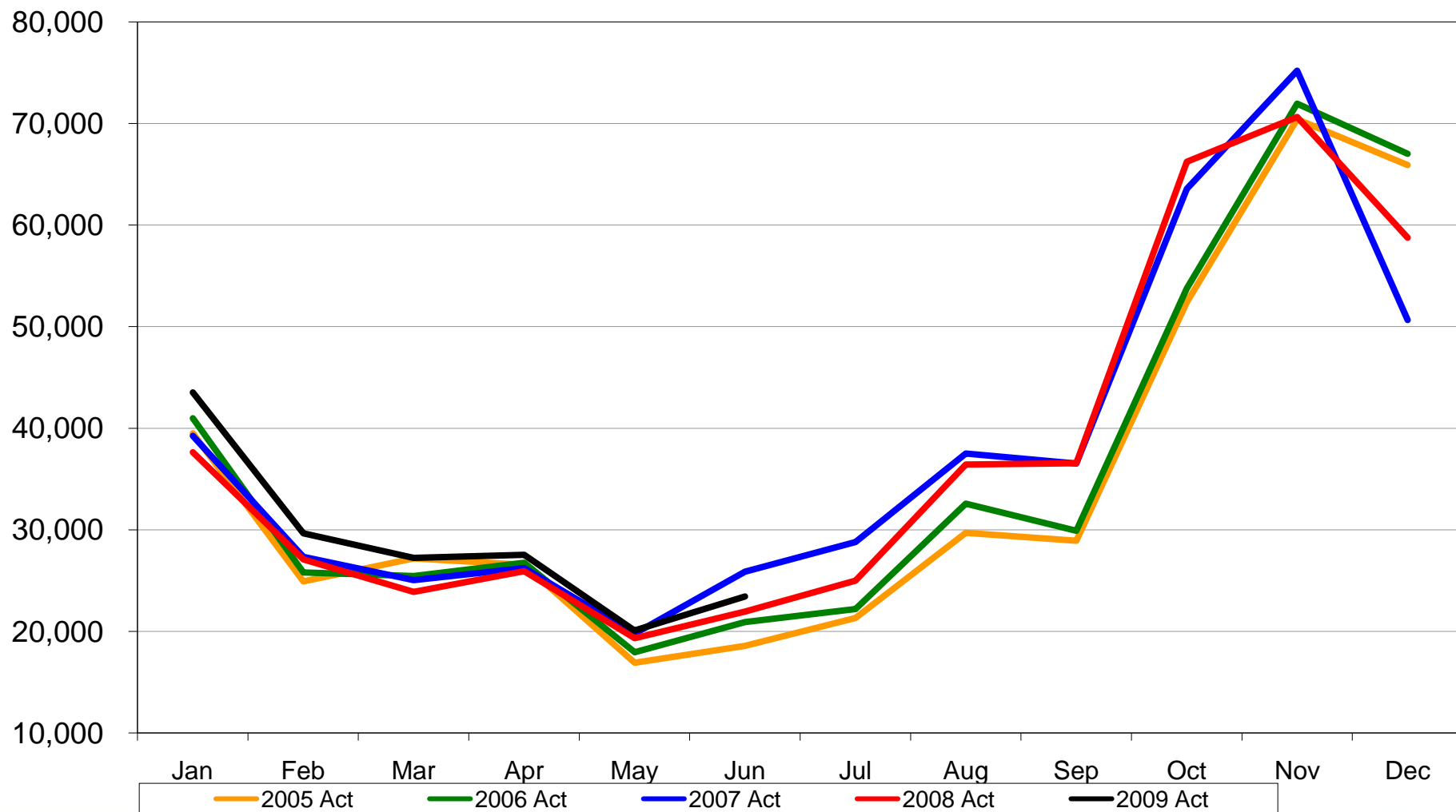


# Total GRE volumes

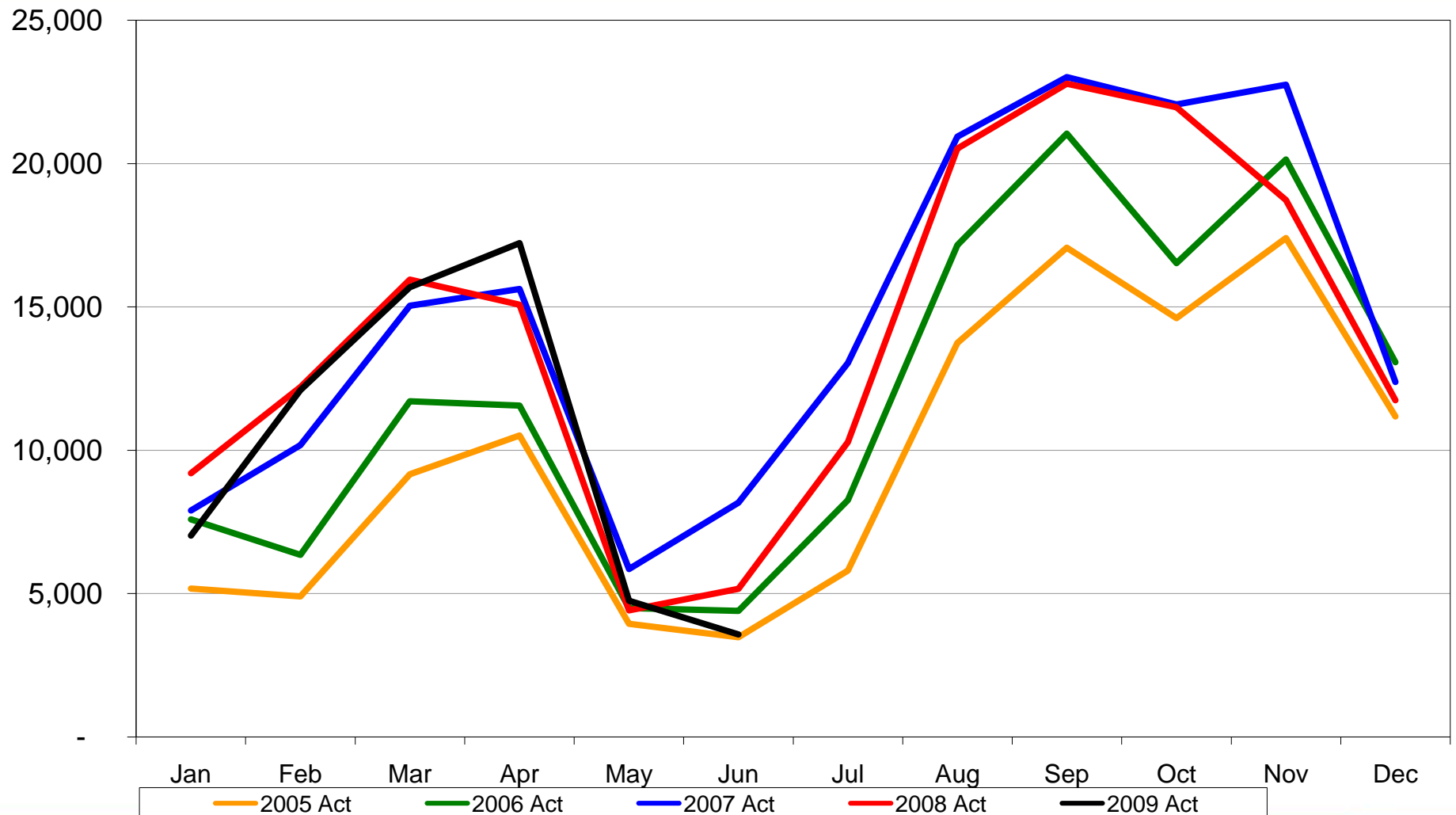




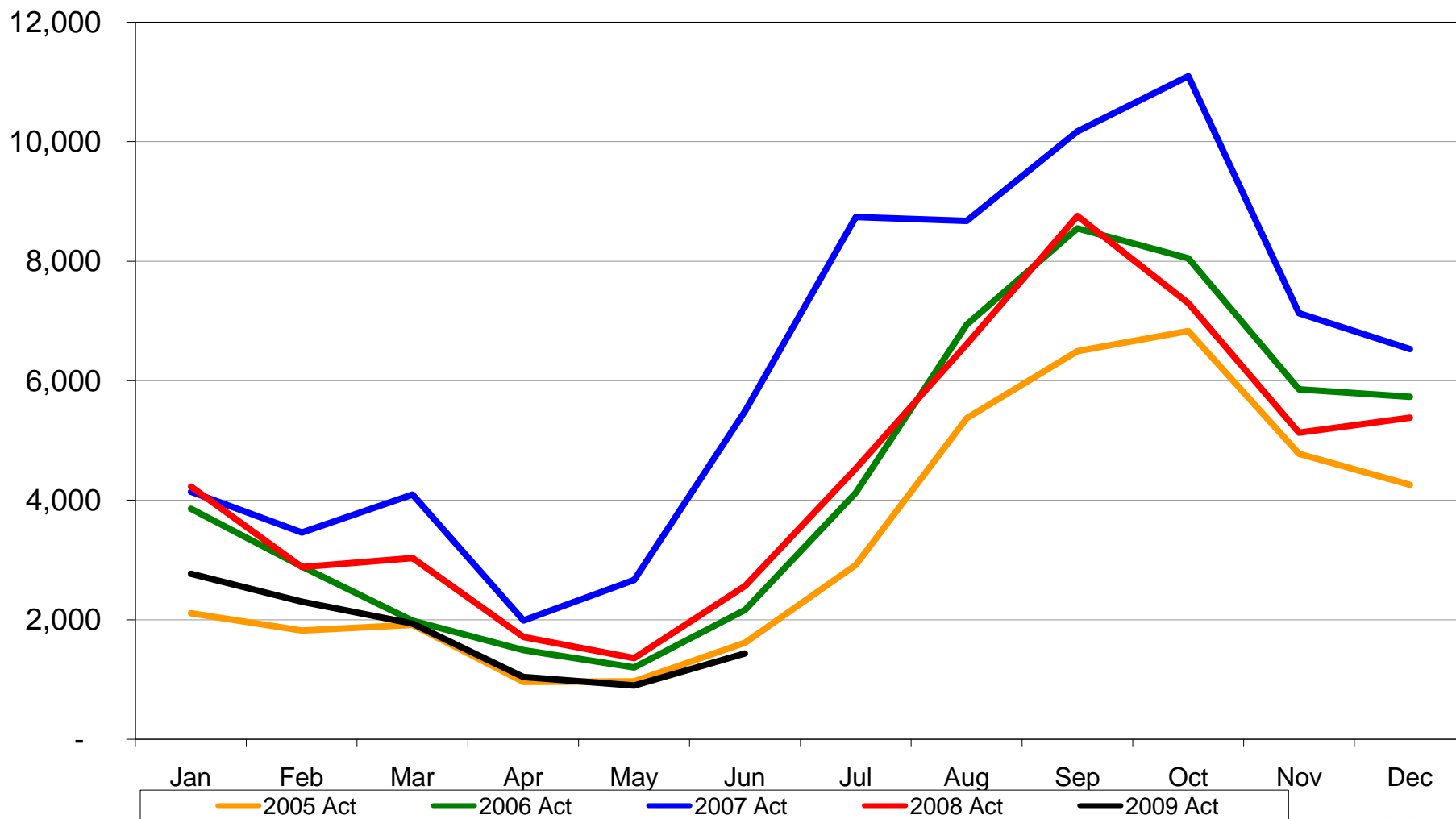
# Domestic GRE volumes



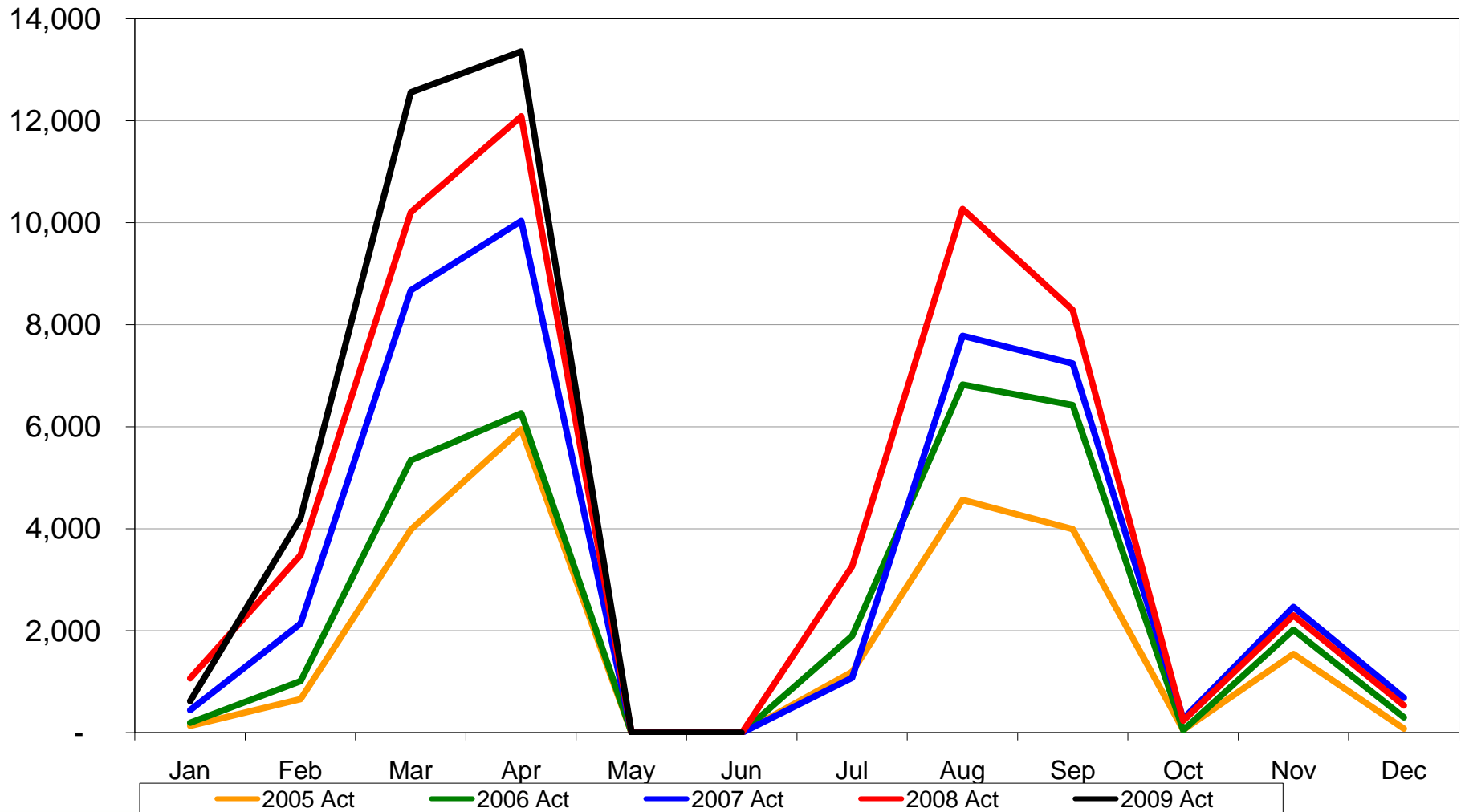
# International GRE volumes



# India GRE volumes

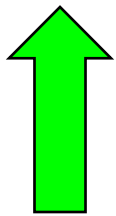


# China GRE volumes

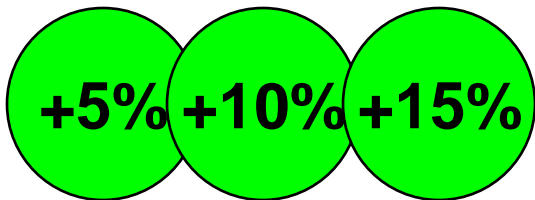


# What is your prediction for 2009?

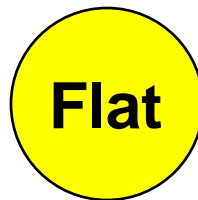
GRE volumes continue to be strong. What is your prediction for the remainder of 2009?



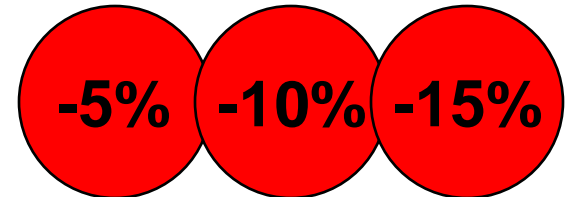
**Volumes  
continue to rise**



**No change**



**Volumes  
begin to drop**



# GRE<sup>®</sup> Revised General Test nearing completion

- We have completed a great deal of work (e.g., test design specifications, psychometric model, etc.).
- We are meeting system development milestones and are in the process of conducting quality testing.
- We are committed to an orderly transition to the revised test.
- The new test will provide significant benefits to faculty and test takers.
- We will announce launch date in December.



**GRE**

Copyright © 2009 by Educational Testing Service. All rights reserved. ETS, the ETS logo, LISTENING. LEARNING. LEADING. and GRE are registered trademarks of Educational Testing Service (ETS).

*The GRE<sup>®</sup> General Test*





# ETS awards

- The GRE and TOEFL® Programs are sponsoring \$2,500 awards for “Best Practices in Graduate Admissions” with Regional CGS organizations and CHBGS. (CAGS is considering the award.)
  - Focus on mission and strategy for the institutions/programs
- ETS is supporting the “Award for Innovation in Promoting Success in Graduate Education: From Admissions through Completion.”
  - \$20,000 plus institutional matching
  - First award to be made in December 2009 at CGS Annual Meeting



**GRE**

Copyright © 2009 by Educational Testing Service. All rights reserved. ETS, the ETS logo, LISTENING. LEARNING. LEADING. and GRE are registered trademarks of Educational Testing Service (ETS).

*The GRE® General Test*



# Need more information?

To get the most up-to-date information:

- ✓ Visit the GRE website at [www.ets.org/gre](http://www.ets.org/gre)
- ✓ Visit the ETS PPI website at [www.ets.org/ppi](http://www.ets.org/ppi)

If you have questions:

- ✓ E-mail GRE questions to [gretests@ets.org](mailto:gretests@ets.org)
- ✓ E-mail ETS PPI questions to [ppi@ets.org](mailto:ppi@ets.org)
- ✓ E-mail David Payne at [dpayne@ets.org](mailto:dpayne@ets.org)

